



**TABLE OF CONTENTS**

Table of Contents ..... 1

BELOW EAVE DETAILS ..... 2

    AU0005 – (Below Eave) ..... 2

LOW EAVE DETAILS ..... 3

    AU0055 – At Eave ..... 3

HIGH EAVE DETAILS ..... 4

    AU0110 – Flush (At Eave) ..... 4

    AU0120 – Inset (At Eave) ..... 5

    AU0130 – 8” Bypass (At Eave) ..... 6

    AU0140 – Bypass (At Eave) ..... 7

    AU0150 – 12” Bypass (At Eave) ..... 8

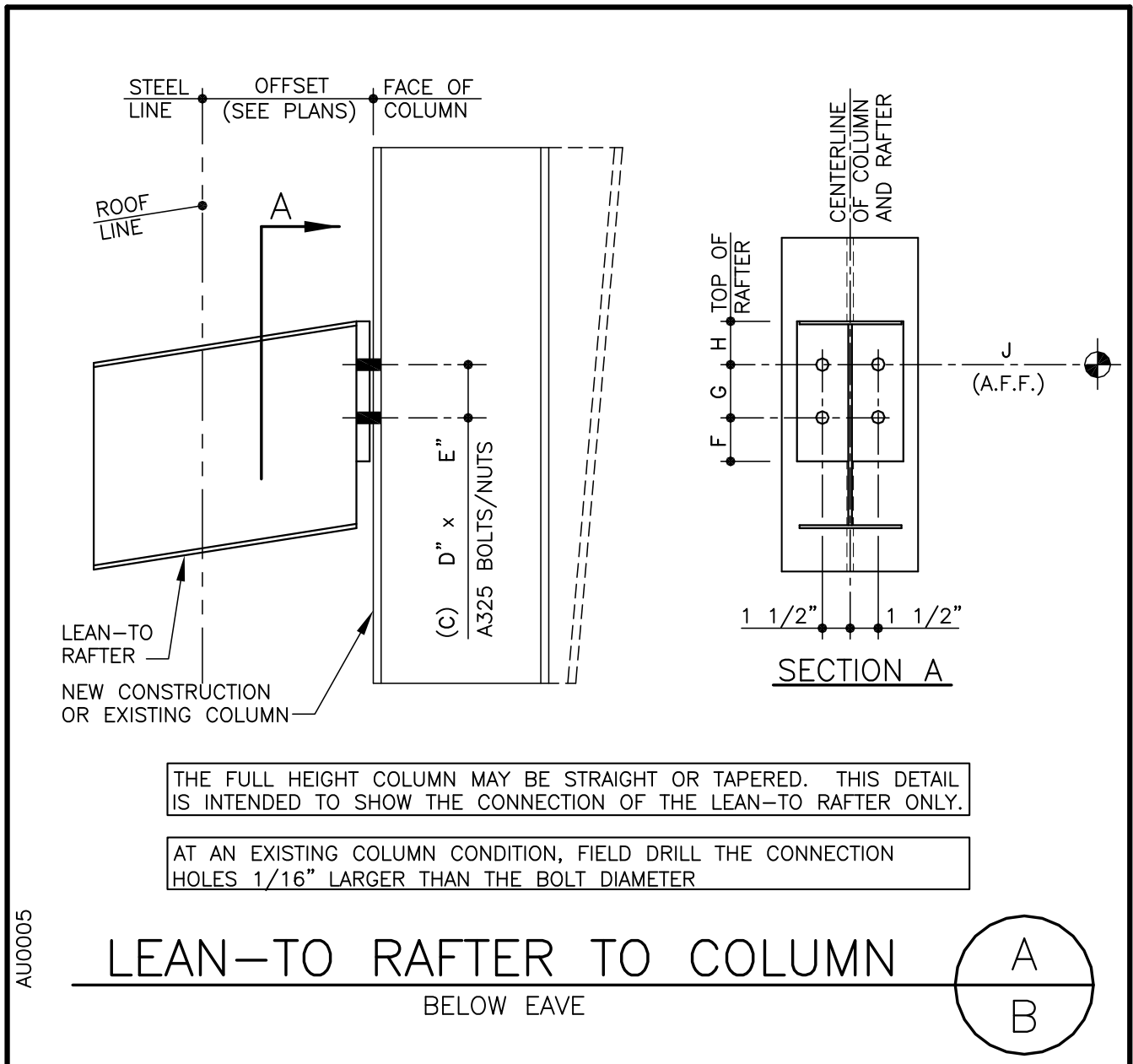
WEB CONNECTION DETAILS ..... 9

    AU0160 – Web Connection ..... 9

**NOTE:** Section **“4.8-Future Expansion Details”** has similar details that could also be used in a Lean-To type connection. Those details have “Spacers” to make the Rafter to Column Connections at the Steel Line.

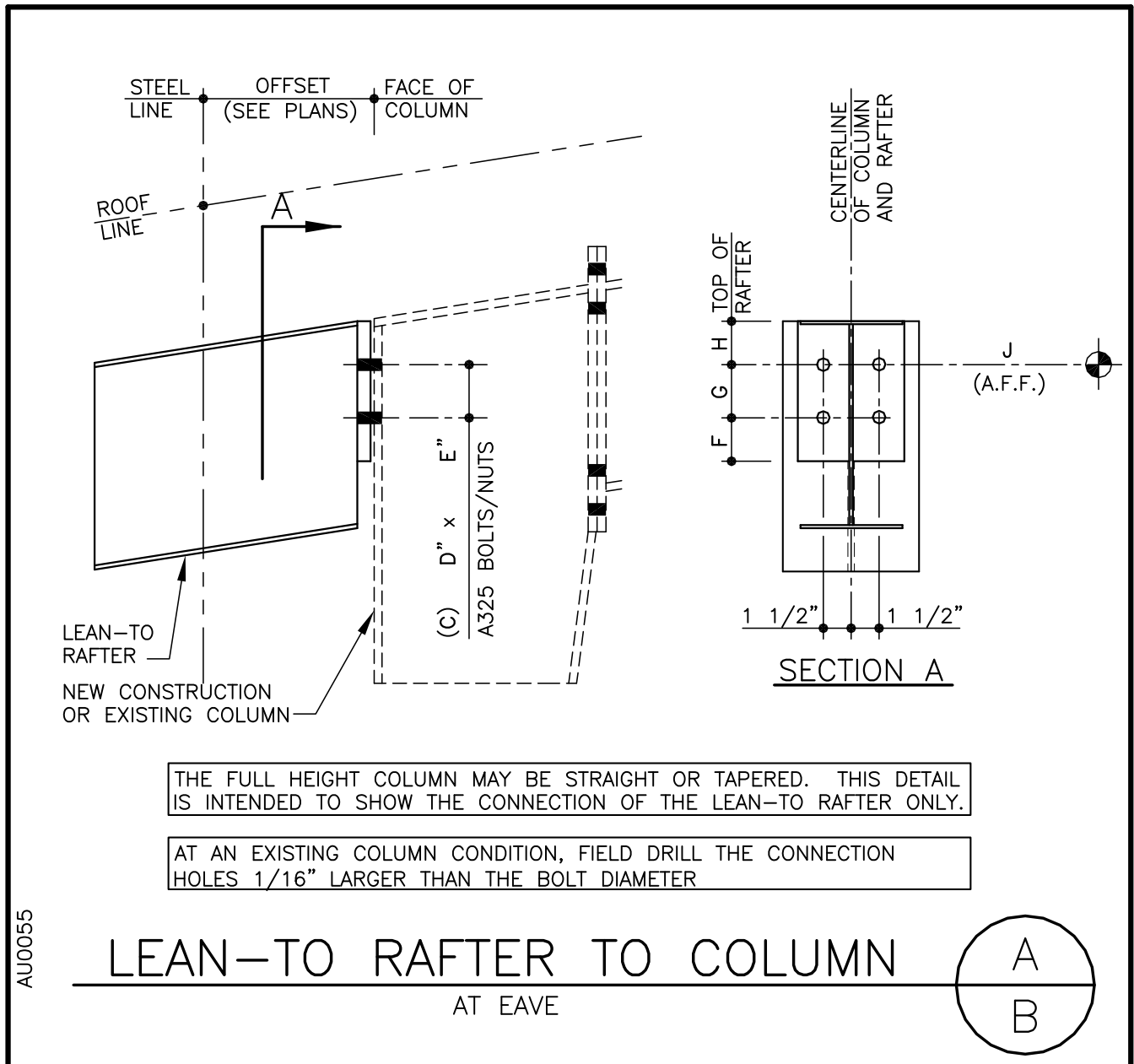
### BELOW EAVE DETAILS

#### AU0005 – (BELOW EAVE)



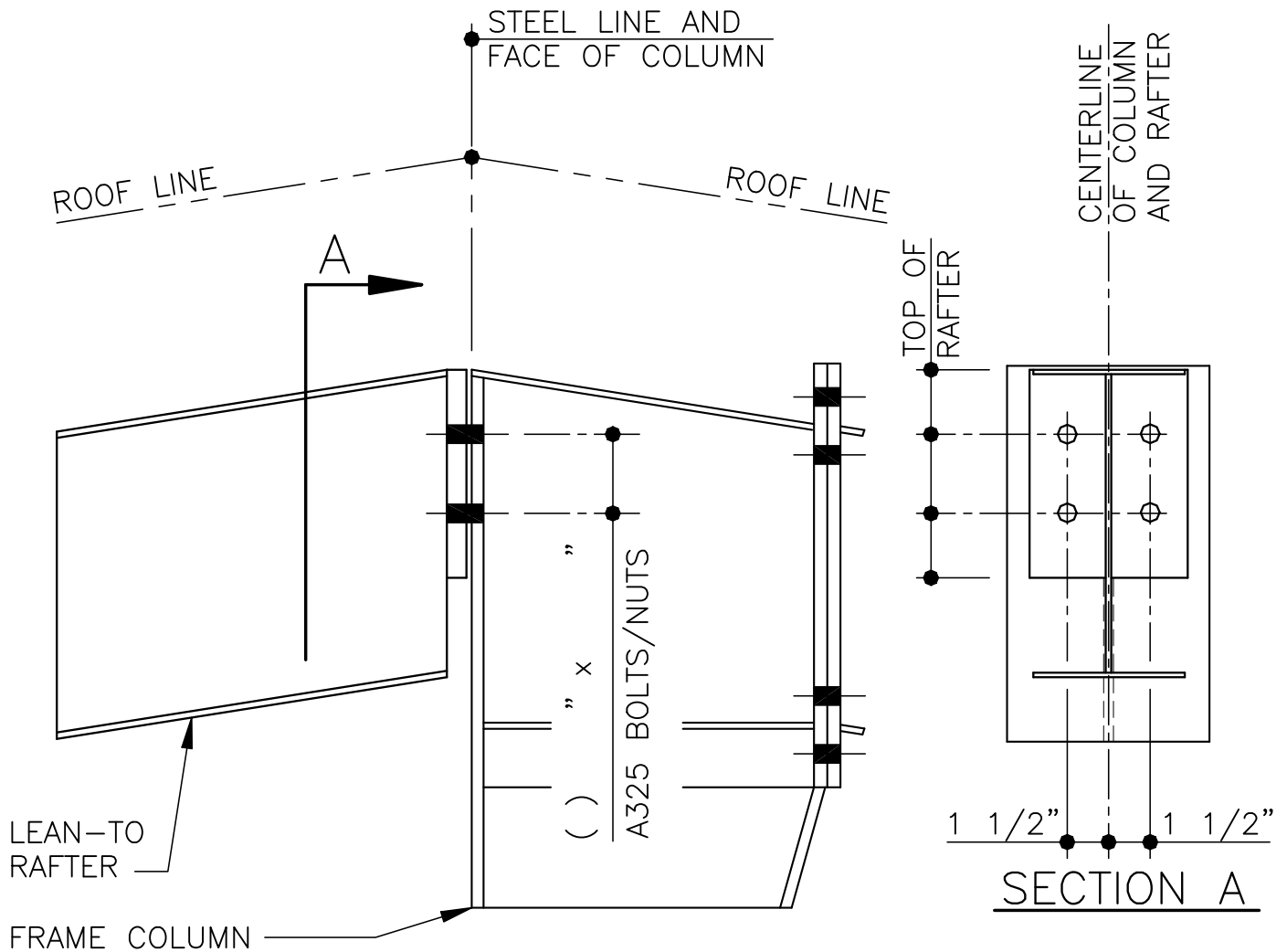
### LOW EAVE DETAILS

#### AU0055 – AT EAVE



**HIGH EAVE DETAILS**

**AU0110 – FLUSH (AT EAVE)**

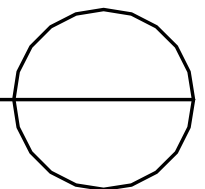


THE FULL HEIGHT COLUMN MAY BE STRAIGHT OR TAPERED. THIS DETAIL IS INTENDED TO SHOW THE CONNECTION OF THE LEAN-TO RAFTER ONLY.

**LEAN-TO RAFTER TO COLUMN**

(FLUSH CONDITON AT EAVE)

RAFTER TO FLANGE OF FULL HEIGHT COLUMN WITHOUT SPACER



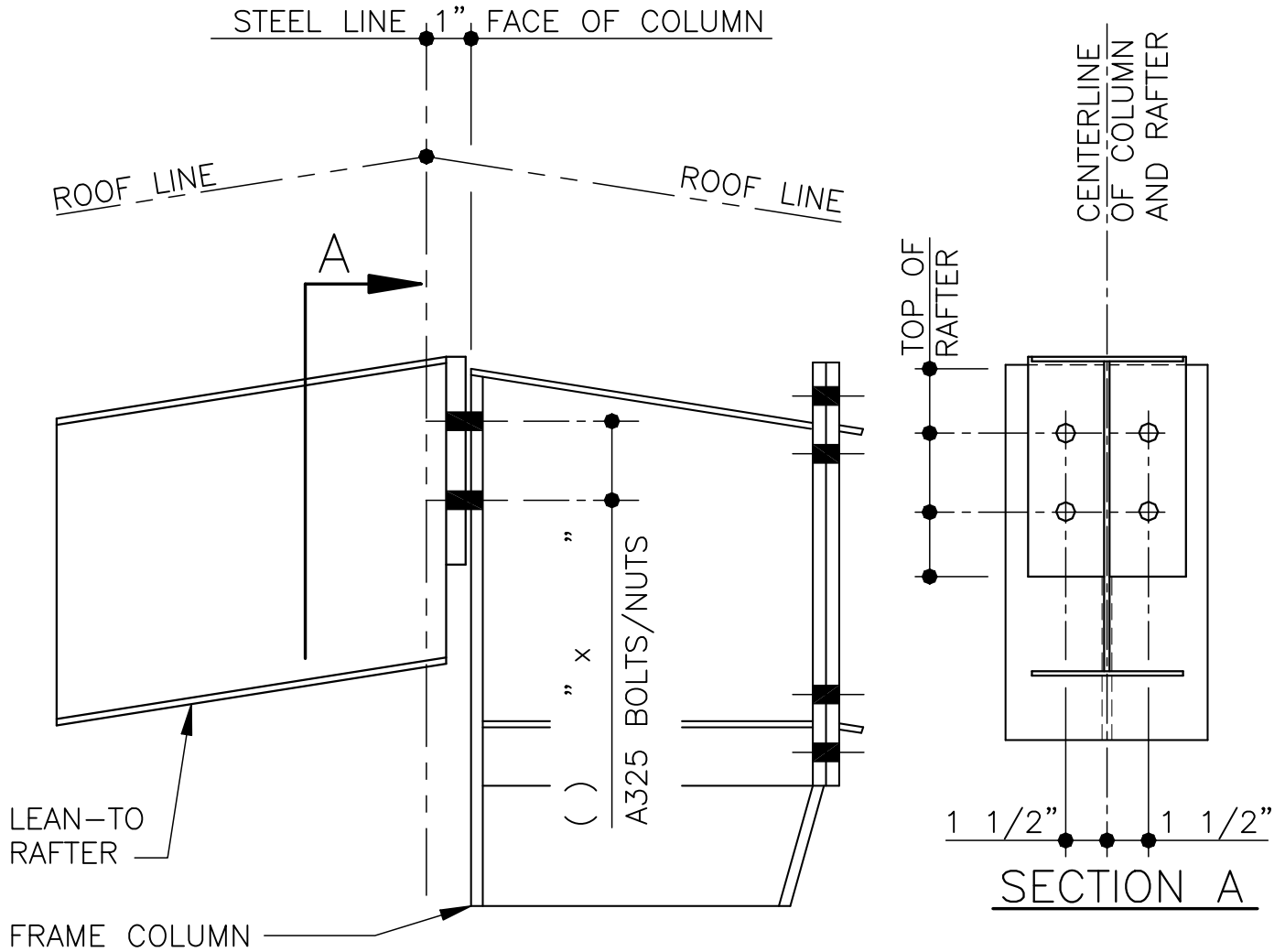
AU0110

LAST REVISION  
 DATE: 04/05/02  
 BY: CDM CHK: RJF

DETAIL NAME IF APPLICABLE  
**AU0110.DWG**

**4.13.4**

### AU0120 – INSET (AT EAVE)

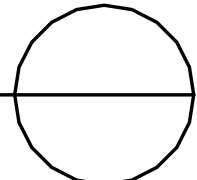


THE FULL HEIGHT COLUMN MAY BE STRAIGHT OR TAPERED. THIS DETAIL IS INTENDED TO SHOW THE CONNECTION OF THE LEAN-TO RAFTER ONLY.

## LEAN-TO RAFTER TO COLUMN

(INSET CONDITON AT EAVE)

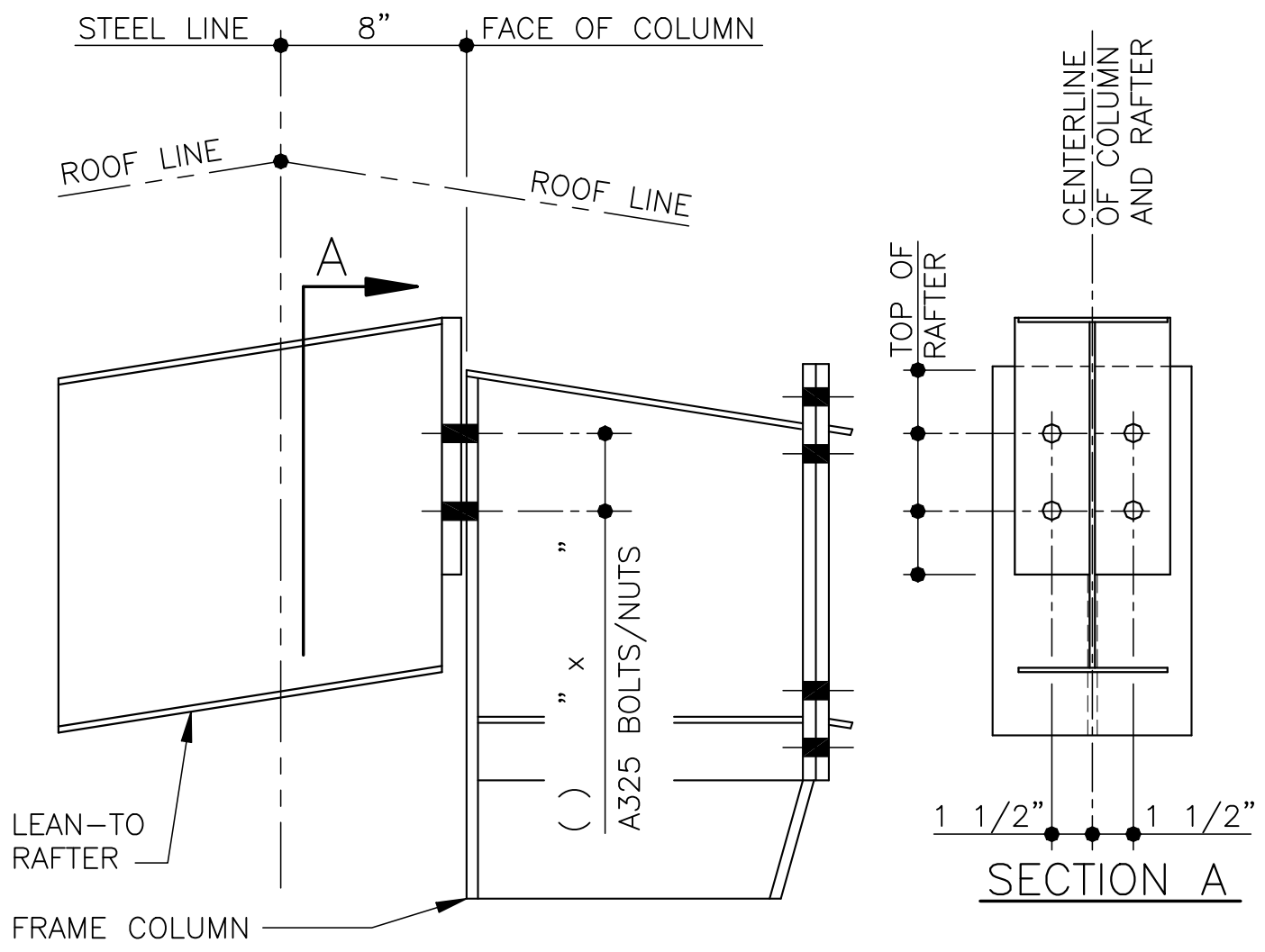
RAFTER TO FLANGE OF FULL HEIGHT COLUMN WITHOUT SPACER



AU0120

|  |  |               |
|--|--|---------------|
| LAST REVISION<br>DATE: <u>04/05/02</u><br>BY: <u>CDM</u> CHK: <u>RJF</u> | DETAIL NAME IF APPLICABLE<br><br><b>AU0120.DWG</b> | <b>4.13.5</b> |
|--|--|---------------|

### AU0130 – 8" BYPASS (AT EAVE)

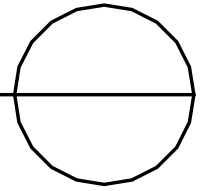


THE FULL HEIGHT COLUMN MAY BE STRAIGHT OR TAPERED. THIS DETAIL IS INTENDED TO SHOW THE CONNECTION OF THE LEAN-TO RAFTER ONLY.

## LEAN-TO RAFTER TO COLUMN

(8" BYPASS CONDITON AT EAVE)

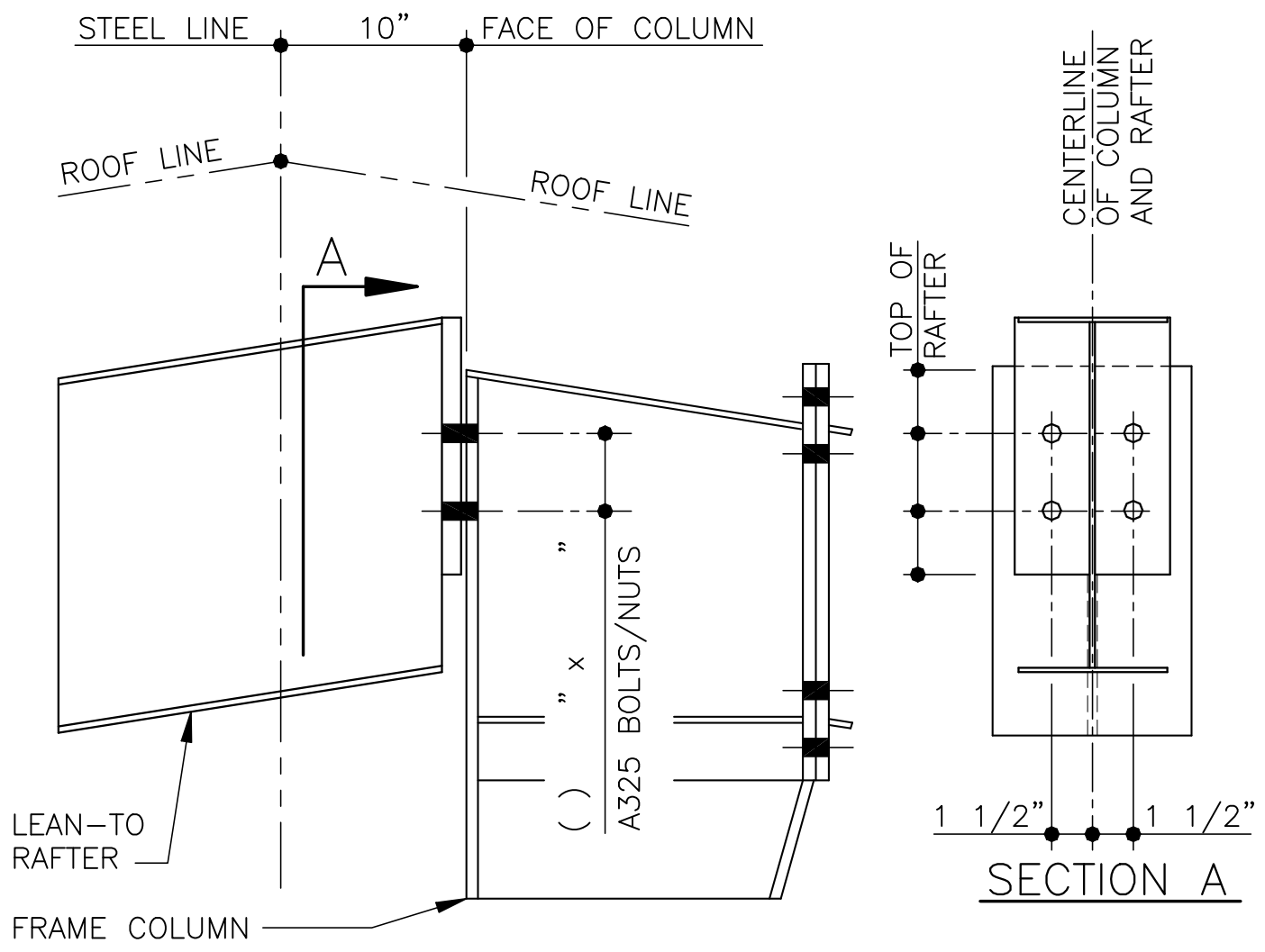
RAFTER TO FLANGE OF FULL HEIGHT COLUMN WITHOUT SPACER



AU0130

|   |   |               |
|---|---|---------------|
| LAST REVISION<br>DATE: 04/05/02<br>BY: CDM CHK: RJF | <u>DETAIL NAME IF APPLICABLE</u><br><br><b>AU0130.DWG</b> | <b>4.13.6</b> |
|---|---|---------------|

### AU0140 – BYPASS (AT EAVE)

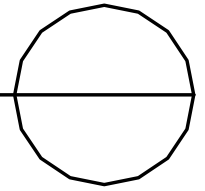


THE FULL HEIGHT COLUMN MAY BE STRAIGHT OR TAPERED. THIS DETAIL IS INTENDED TO SHOW THE CONNECTION OF THE LEAN-TO RAFTER ONLY.

## LEAN-TO RAFTER TO COLUMN

(10" BYPASS CONDITON AT EAVE)

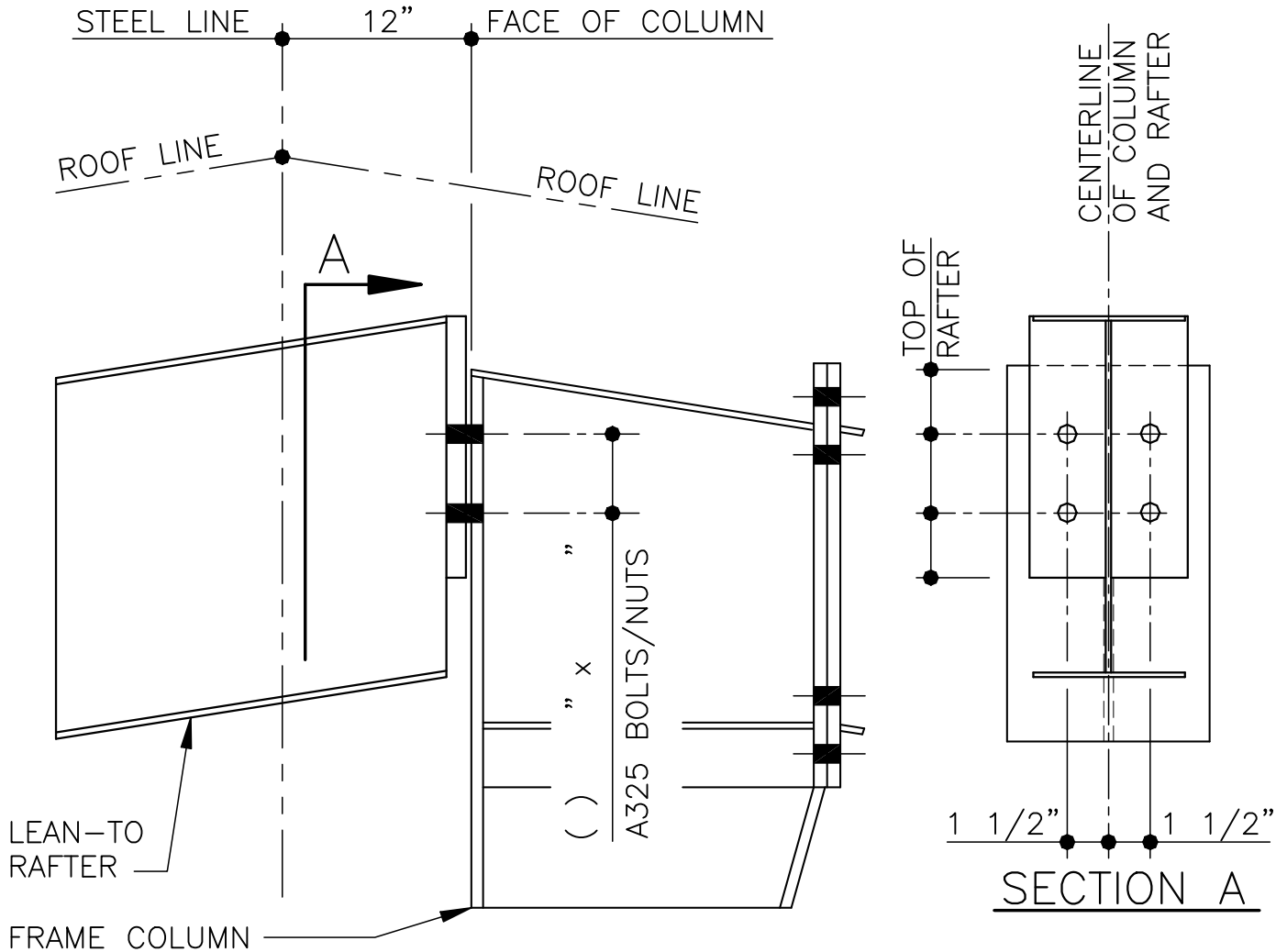
RAFTER TO FLANGE OF FULL HEIGHT COLUMN WITHOUT SPACER



AU0140

|   |  |               |
|---|--|---------------|
| LAST REVISION<br>DATE: 04/05/02<br>BY: CDM CHK: RJF | DETAIL NAME IF APPLICABLE<br><b>AU0140.DWG</b> | <b>4.13.7</b> |
|---|--|---------------|

### AU0150 – 12" BYPASS (AT EAVE)

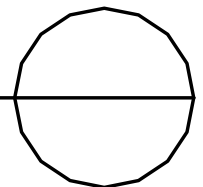


THE FULL HEIGHT COLUMN MAY BE STRAIGHT OR TAPERED. THIS DETAIL IS INTENDED TO SHOW THE CONNECTION OF THE LEAN-TO RAFTER ONLY.

## LEAN-TO RAFTER TO COLUMN

(12" BYPASS CONDITON AT EAVE)

RAFTER TO FLANGE OF FULL HEIGHT COLUMN WITHOUT SPACER



AU0150

LAST REVISION  
DATE: 04/05/02  
BY: CDM CHK: RJF

DETAIL NAME IF APPLICABLE

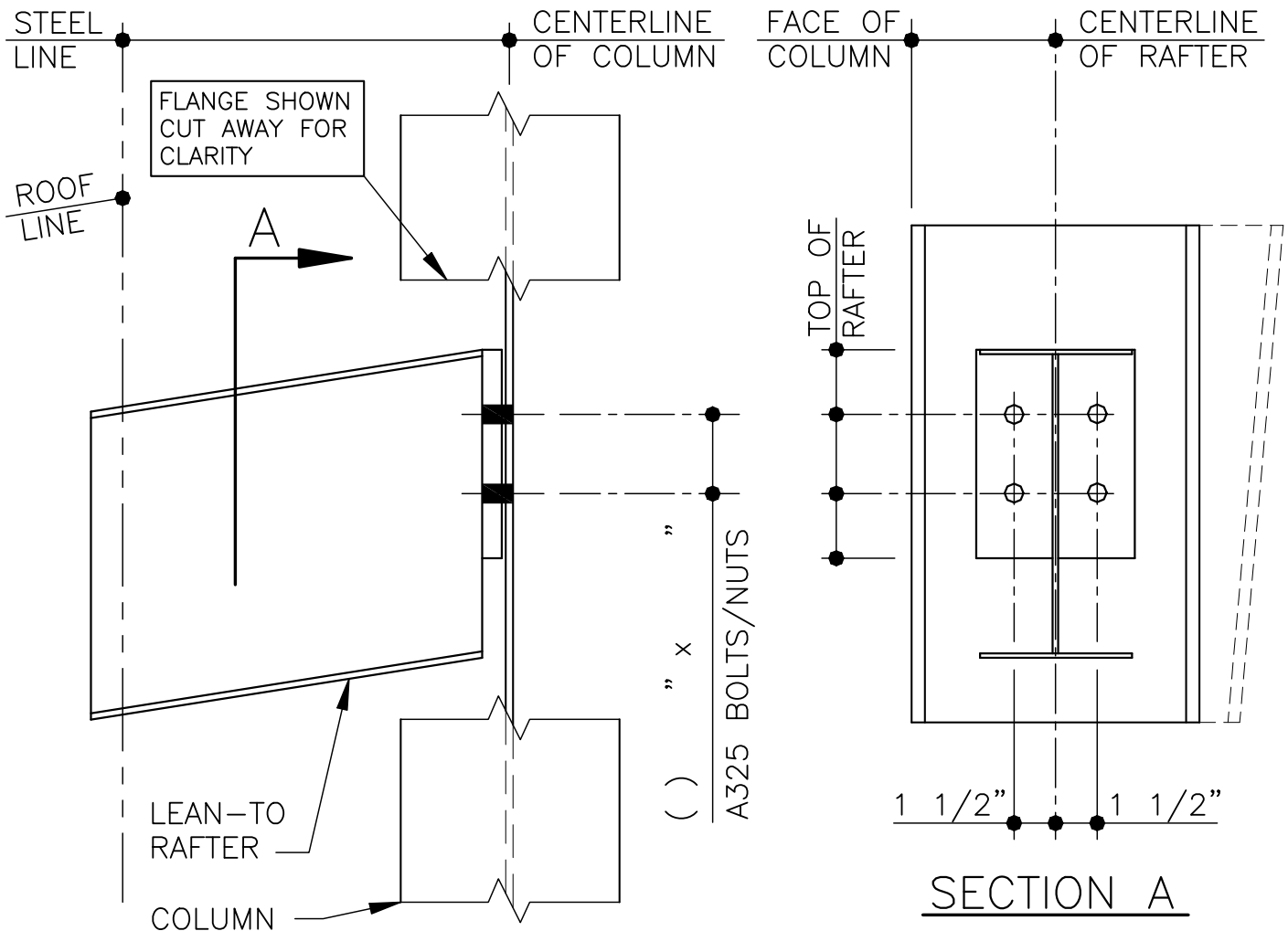
**AU0150.DWG**

**4.13.8**



### WEB CONNECTION DETAILS

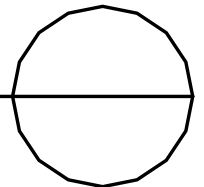
#### AU0160 – WEB CONNECTION



THE FULL HEIGHT COLUMN MAY BE STRAIGHT OR TAPERED. THIS DETAIL IS INTENDED TO SHOW THE CONNECTION OF THE LEAN-TO RAFTER ONLY.

## LEAN-TO RAFTER TO COLUMN

RAFTER TO WEB OF FULL HEIGHT COLUMN (WITHOUT SPACER)



AU0160

|  |  |               |
|--|--|---------------|
| LAST REVISION<br>DATE: <u>04/05/02</u><br>BY: <u>CDM</u> CHK: <u>RJF</u> | DETAIL NAME IF APPLICABLE<br><b>AU0160.DWG</b> | <b>4.13.9</b> |
|--|--|---------------|