



TABLE OF CONTENTS

Table of Contents 1

Spandrel Beam Details..... 2

 CO0030 – SW/EW Double Beam 2

 CO0050 – EW Beam to RF Tapered Column 3

 CO0070 – SW Beam to RF Column 4

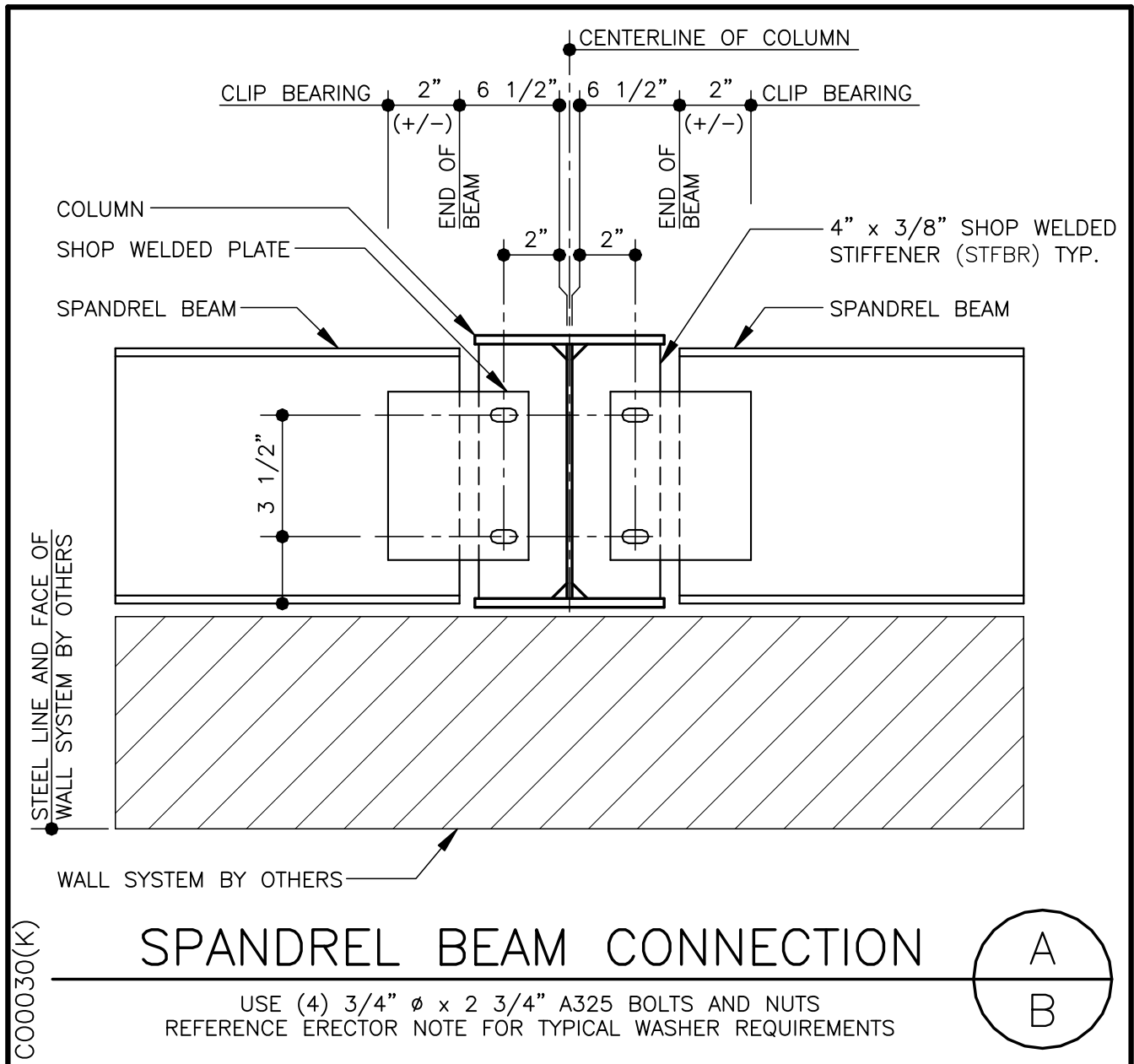
 CO0130 – SW & EW Beams to P & B Column 5

Refer to [Section 4.9](#) for [Tilt-Up / Pre-Cast Wall Details](#)

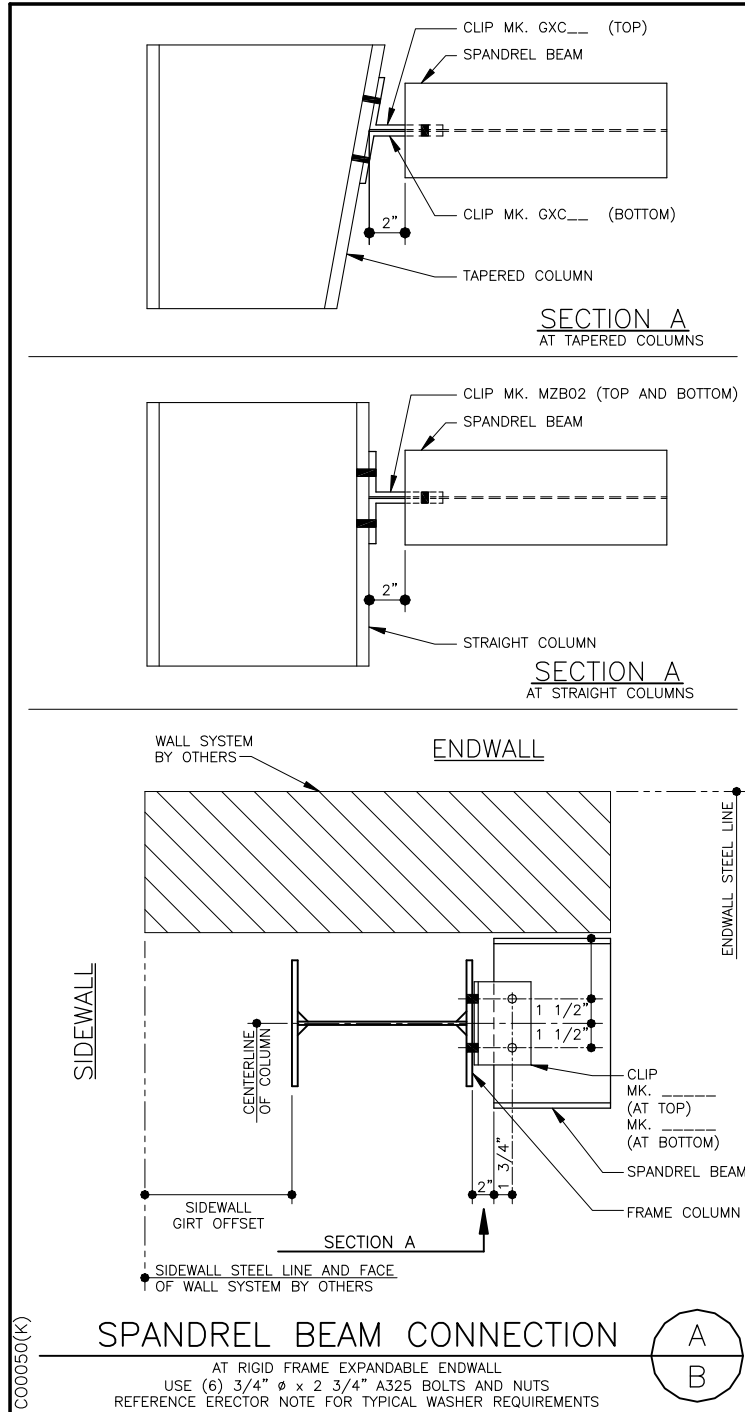
Refer to [Section 4.10](#) for [Non-Load Bearing Masonry Wall Details](#)

SPANDREL BEAM DETAILS

CO0030 – SW/EW DOUBLE BEAM



CO0050 – EW BEAM TO RF TAPERED COLUMN

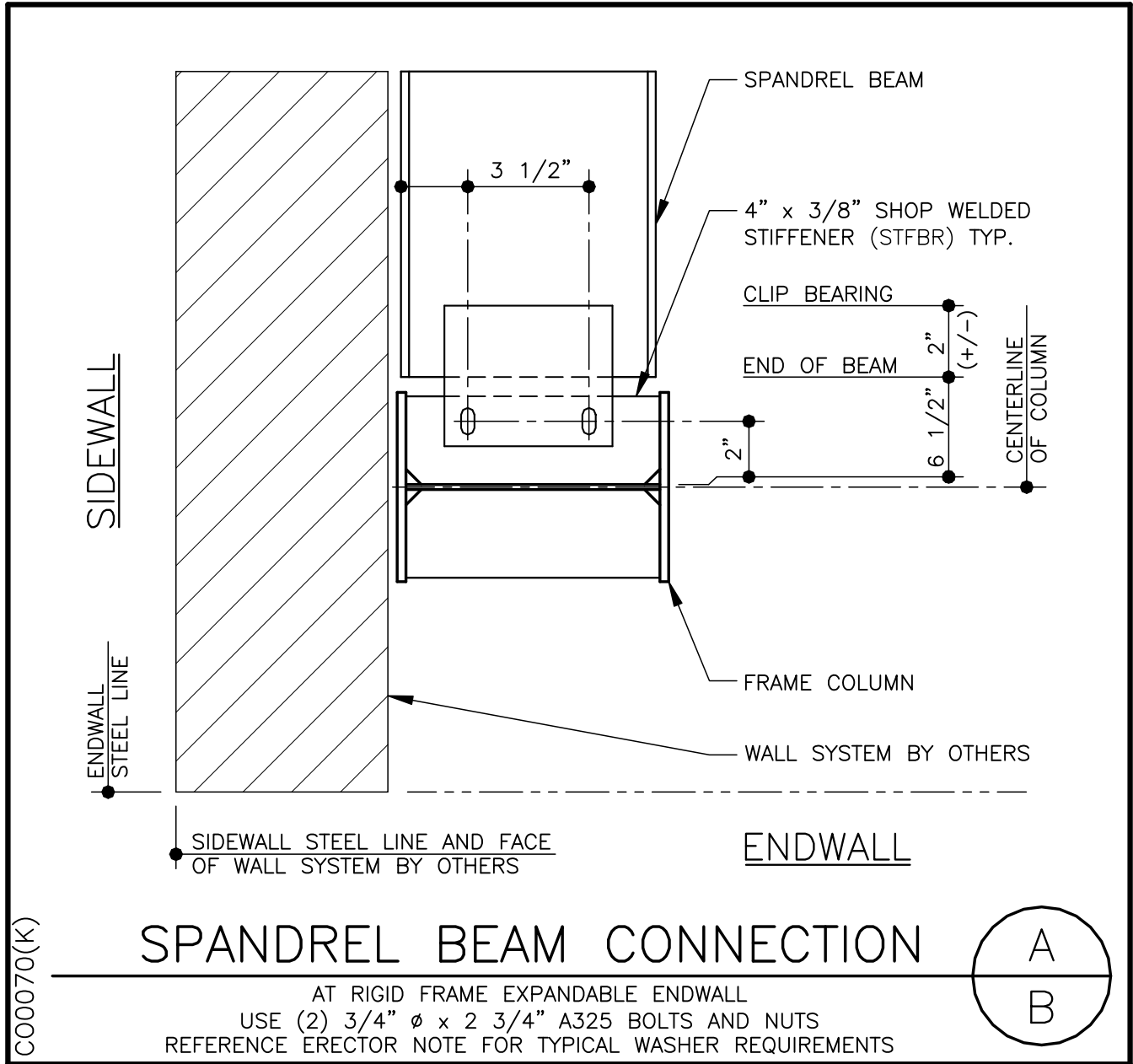


LAST REVISION
 DATE: 08/11/04
 BY: KMC CHK: RJF

DETAIL NAME IF APPLICABLE
CO0050.DWG

4.14.3

CO0070 – SW BEAM TO RF COLUMN



| |
|------------------|
| LAST REVISION |
| DATE: 08/11/04 |
| BY: KMC CHK: RJF |

| |
|---------------------------|
| DETAIL NAME IF APPLICABLE |
| CO0070.DWG |

| |
|--------|
| 4.14.4 |
|--------|

CO0130 – SW & EW BEAMS TO P & B COLUMN

