



TABLE OF CONTENTS

Table of Contents 1

General Frame Information 2

 PF0010PE – Primary & Endwall Framing Column Layout Information 3

RCG – Rigid Frame, Clear Span, Gable 4

 PF0020PE – RCG Framing Features 4

 PF0030PE – RCG Frame Clearances 5

 PF0030PE – RCG Frame Clearances Continued 6

TCG – Tapered Beam, Clear Span, Gable 7

 PF0040PE – TCG Framing Features 7

 PF0050PE – TCG Frame Clearances 8

 PF0050PE – TCG Frame Clearances Continued 9

RMG-X – Rigid Frame, Modular, Gable 10

 PF0060PE – RMG-X Framing Features 10

 PF0070PE – RMG-1 Frame Clearances 11

 PF0070PE – RMG-1 Frame Clearances Continued 12

 PF0080PE – RMG-2 Frame Clearances 13

 PF0080PE – RMG-2 Frame Clearances Continued 14

 PF0090PE – RMG-3 Frame Clearances 15

 PF0090PE – RMG-3 Frame Clearances Continued 16

 PF0100PE – RMG-4 Frame Clearances 17

RCS – Rigid Frame, Clear Span, Single Slope 18

 PF0110PE – RCS Framing Features 18

 PF0120PE – RCS Frame Clearances 19

 PF0120PE – RCS Frame Clearances Continued 20

RMS-X – Rigid Frame, Modular, Single Slope 21

 PF0130PE – RMS-X Framing Features 21

 PF0140PE – RMS-1 Frame Clearances 22

 PF0140PE – RMS-1 Frame Clearances Continued 23

 PF0150PE – RMS-2 Frame Clearances 24

 PF0150PE – RMS-2 Frame Clearances Continued 25

LCS – Lean-To 26

 PF0160PE – LCS Framing Features 26

 PF0170PE – LCS Frame Clearances 27

 PF0170PE – LCS Frame Clearances Continued 28



GENERAL FRAME INFORMATION

NUCOR BUILDING SYSTEMS PRIMARY FRAMES

The frames that follow are typical configurations. These frames represent the most commonly specified framing systems. Since all Nucor frames are designed and manufactured on a custom basis, the requirements on a given project can be met even if the appropriate frames are not found in the following pages. **In keeping with a continuing program of product improvement, the charts on the following pages are subject to change, and are to be used as a guide only.** Please consult the Nucor Sales Service team for more information and specific assistance.

NOTES ON FRAME TABLES

The frames shown are valid for 80 and 90 mph, Exposure B and C condition wind loading under the UBC and BOCA NBC model building codes.

If the live load and bay combination on your particular project is not specifically found in the framing tables, compute your tributary loading and go on to the next larger tributary load entry.

Tributary loading equals the higher of live load or snow load plus collateral and dead load times the appropriate bay spacing for the frames. Example: $(30 \text{ psf} + 5 \text{ psf}) \times 25' \text{ bay average} = 875 \text{ plf}$ – use table entry for 900 plf. In the special case of a 2 bay building, increased loading of the center frame line occurs, yielding an increase of 25% in tributary width.

All frame clearances are based on 8 inch purlins and girts. For 10 inch purlins and girts, subtract 2 inches from table dimensions B, C, D, and E. For 12 inch purlins, subtract 4 inches from table dimensions B, C, D, and E. For bar joist roof systems, add 4 1/2 inches to dimensions C and D. Please see Secondary Structural/Component section of this product manual ([section 4.3](#)) for purlin/girt depth and spacing information.

Roof slope used to calculate frame clearances are as shown on cross-section drawings.

PF0010PE – PRIMARY & ENDWALL FRAMING COLUMN LAYOUT INFORMATION

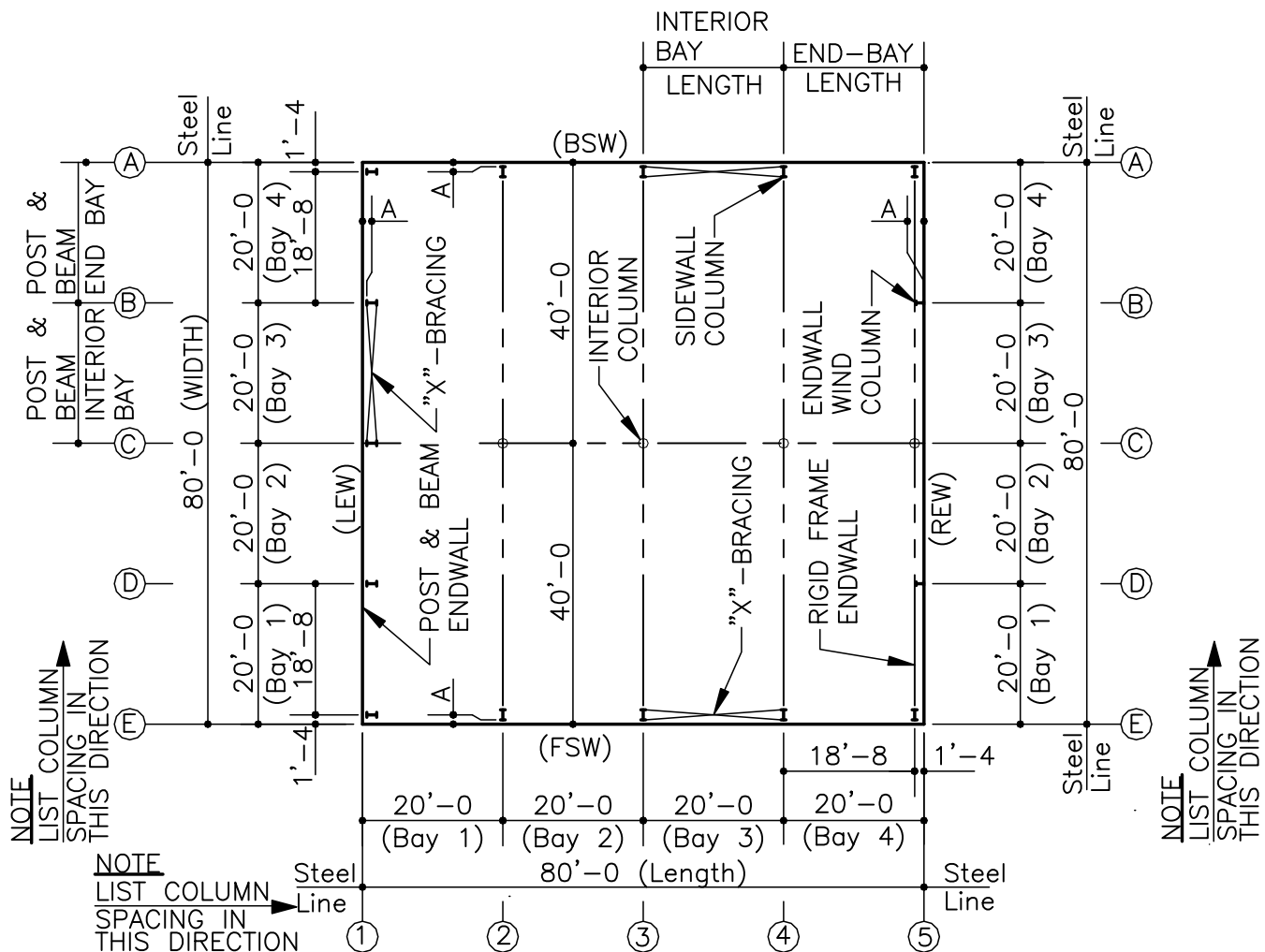
This page is intended to show basic terminology and standard column locations to assist you in communicating specific needs for quotes and orders. Knowing this information can save both time and cost by allowing us to serve you in the most effective way.

LEW = LEFT ENDWALL
 REW = RIGHT ENDWALL
 FSW = FRONT SIDEWALL
 BSW = BACK SIDEWALL

*Standard post & beam corner column orientation is shown. However, based on building requirements, this column will sometimes be rotated 90°.

A = Girt offset as defined on the order documents.

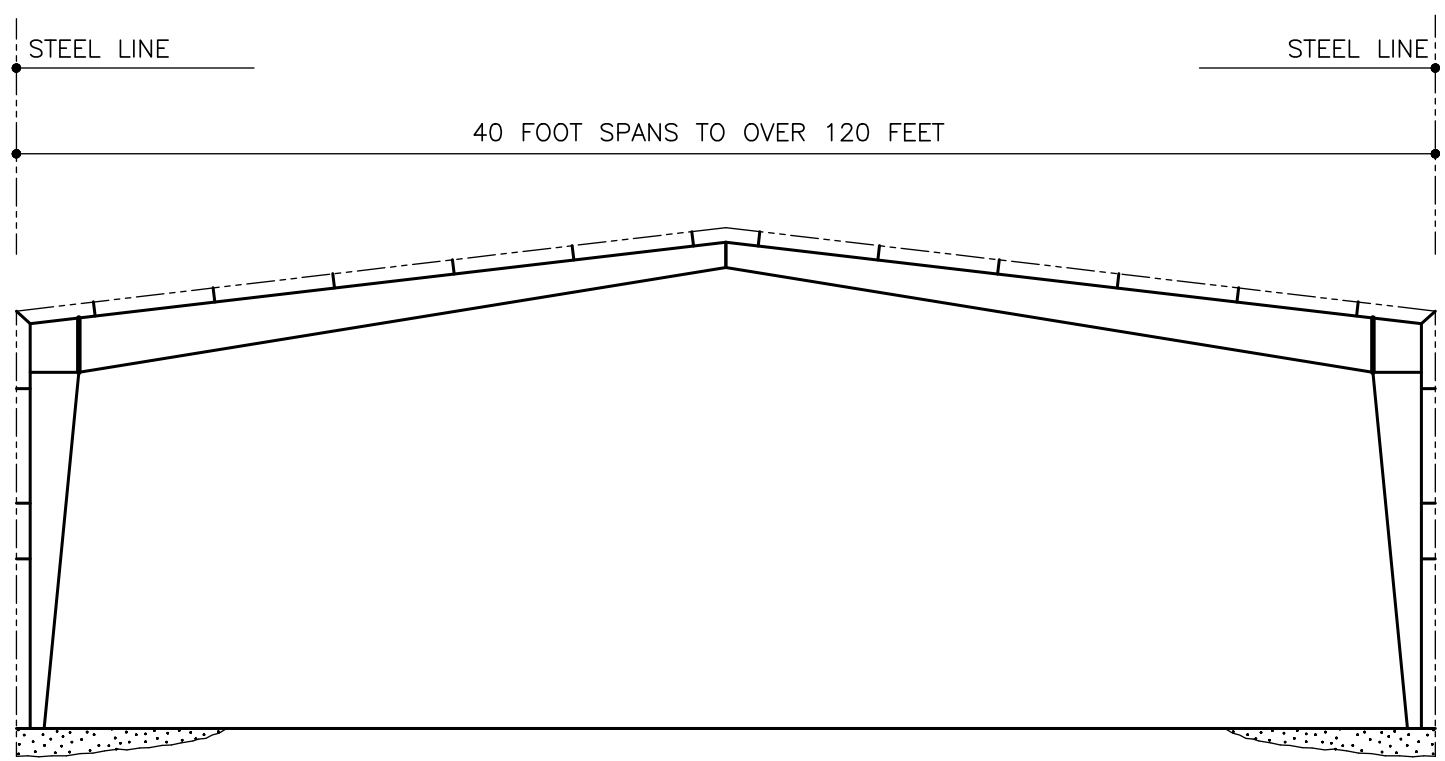
NOTE: "STEEL LINE = THE OUTSIDE FACE OF THE GIRTS."





RCG – RIGID FRAME, CLEAR SPAN, GABLE

PF0020PE – RCG FRAMING FEATURES



RCG FRAMING FEATURES

1. RCG Rigid Frames provide for the widest possible spans without interior columns.
2. RCG Rigid Frames are economical due to the efficient use of tapered members and high strength steel.
3. RCG Rigid Frames maximize the clearance available in the center of a building.
4. **All numbers are preliminary and subject to change.** Please contact Nucor for specific building clearances.
5. "Bypass" is the standard girt condition at sidewalls.

LAST REVISION
 DATE: 04/05/02
 BY: CDM CHK: RJF

DETAIL NAME IF APPLICABLE
PF0020PE.DWG

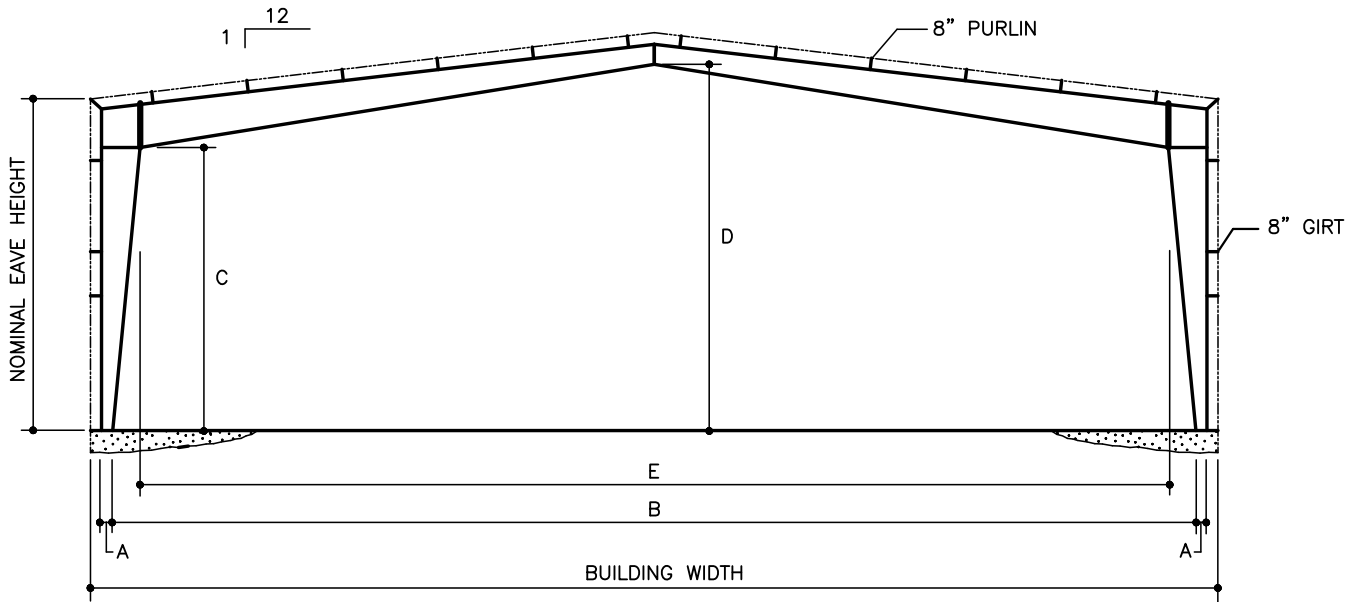
4.1.4



PRODUCT AND ENGINEERING MANUAL

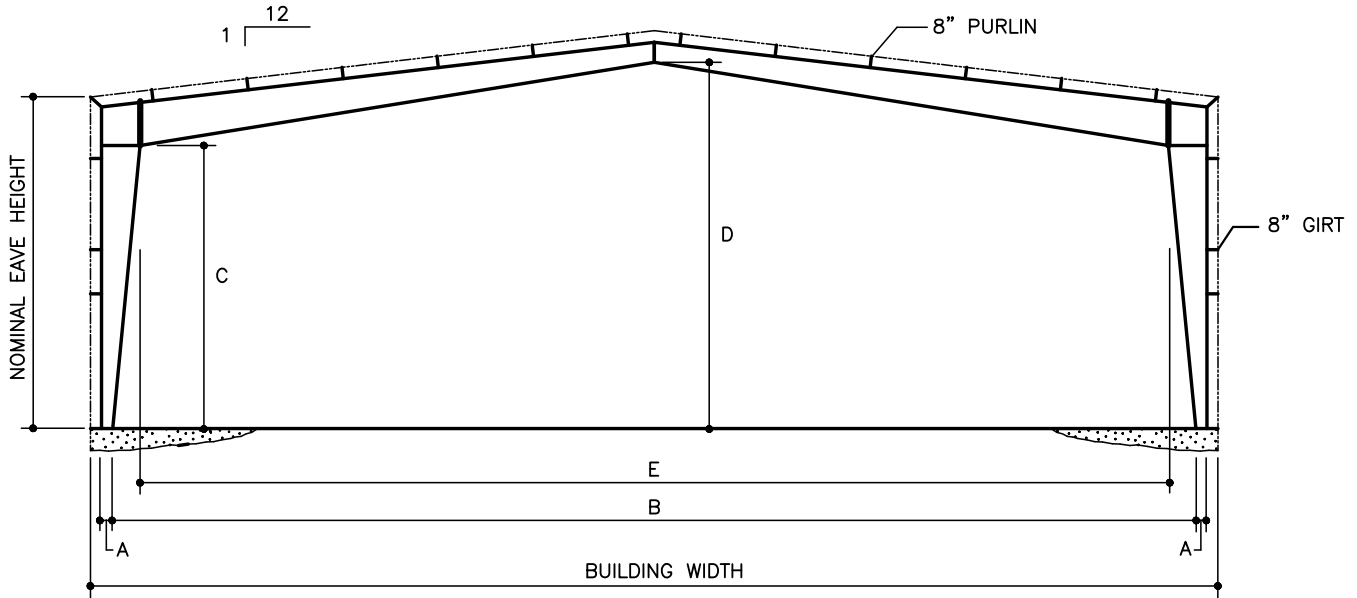
4.1 PRIMARY FRAMING

PF0030PE – RCG FRAME CLEARANCES



BLDG. WIDTH	NOM. EAVE HT.	10 PSF LIVE LOAD 20' BAY TRIB. LOAD = 200 PLF					30 PSF LIVE LOAD 30' BAY TRIB. LOAD = 900 PLF					50 PSF LIVE LOAD 32' BAY TRIB. LOAD = 1600 PLF				
		A	B	C	D	E	A	B	C	D	E	A	B	C	D	E
40'	10' 12"	12"	36'-8"	8'-6"	10'-0"	35'-4"	12"	36'-8"	8'-0"	10'-0"	35'-4"	12"	36'-8"	7'-10"	9'-9"	34'-8"
	12'	12"	36'-8"	10'-6"	12'-0"	35'-4"	12"	36'-8"	10'-0"	12'-0"	35'-4"	12"	36'-8"	9'-10"	11'-9"	34'-8"
	16'	12"	36'-8"	14'-6"	16'-0"	35'-4"	12"	36'-8"	14'-0"	16'-0"	35'-4"	12"	36'-8"	13'-10"	15'-9"	34'-8"
	20'	12"	36'-8"	18'-6"	20'-0"	35'-4"	12"	36'-8"	18'-0"	20'-0"	35'-4"	12"	36'-8"	17'-10"	19'-9"	34'-8"
	24'	12"	36'-8"	22'-6"	24'-0"	35'-4"	12"	36'-8"	22'-0"	24'-0"	35'-4"	12"	36'-8"	21'-10"	23'-9"	34'-8"
	28'	12"	36'-8"	26'-6"	28'-0"	35'-4"	12"	36'-8"	26'-0"	28'-0"	35'-4"	12"	36'-8"	25'-8"	27'-9"	34'-8"
	30'	12"	36'-8"	28'-6"	30'-0"	35'-4"	12"	36'-8"	28'-0"	30'-0"	35'-4"	12"	36'-8"	27'-8"	29'-9"	34'-8"
60'	10' 12"	12"	56'-8"	8'-0"	10'-10"	54'-8"	12"	56'-8"	7'-6"	10'-4"	54'-8"	12"	56'-8"	7'-2"	10'-2"	53'-4"
	12' 12"	12"	56'-8"	10'-0"	12'-10"	54'-8"	12"	56'-8"	9'-6"	12'-4"	54'-8"	12"	56'-8"	9'-2"	12'-2"	53'-4"
	16' 12"	12"	56'-8"	14'-0"	16'-10"	54'-8"	12"	56'-8"	13'-6"	16'-4"	54'-8"	12"	56'-8"	13'-0"	16'-2"	53'-4"
	20' 12"	12"	56'-8"	18'-0"	20'-10"	54'-8"	12"	56'-8"	17'-6"	20'-4"	54'-8"	12"	56'-8"	17'-0"	20'-2"	53'-4"
	24' 12"	12"	56'-8"	22'-0"	24'-10"	54'-8"	12"	56'-8"	21'-6"	24'-4"	54'-8"	12"	56'-8"	21'-0"	24'-2"	53'-4"
	28' 12"	12"	56'-8"	26'-0"	28'-10"	54'-8"	12"	56'-8"	25'-6"	28'-4"	54'-8"	12"	56'-8"	24'-10"	28'-2"	53'-4"
	30' 12"	12"	56'-8"	28'-0"	30'-10"	54'-8"	12"	56'-8"	27'-6"	30'-4"	54'-8"	12"	56'-8"	26'-10"	30'-2"	53'-4"
80'	10' 12"	16"	76'-8"	7'-0"	11'-0"	73'-2"	16"	76'-0"	6'-9"	10'-6"	72'-4"	20"	75'-4"	5'-11"	10'-4"	72'-0"
	12' 12"	16"	76'-8"	9'-0"	13'-0"	73'-2"	16"	76'-0"	8'-9"	12'-6"	72'-4"	20"	75'-4"	7'-11"	12'-4"	72'-0"
	16' 12"	16"	76'-8"	13'-0"	17'-0"	73'-2"	16"	76'-0"	12'-9"	16'-6"	72'-4"	20"	75'-4"	11'-11"	16'-4"	72'-0"
	20' 12"	16"	76'-8"	17'-0"	21'-0"	73'-2"	16"	76'-0"	16'-9"	20'-6"	72'-4"	20"	75'-4"	15'-11"	20'-4"	72'-0"
	24' 12"	16"	76'-8"	21'-0"	25'-0"	73'-2"	16"	76'-0"	20'-9"	24'-6"	72'-4"	20"	75'-4"	19'-11"	24'-4"	72'-0"
	28' 12"	16"	76'-8"	25'-0"	29'-0"	73'-2"	16"	76'-0"	24'-9"	28'-6"	72'-4"	20"	75'-4"	23'-11"	28'-4"	72'-0"
	30' 12"	16"	76'-8"	27'-0"	31'-0"	73'-2"	16"	76'-0"	26'-9"	30'-6"	72'-4"	20"	75'-4"	25'-11"	30'-4"	72'-0"

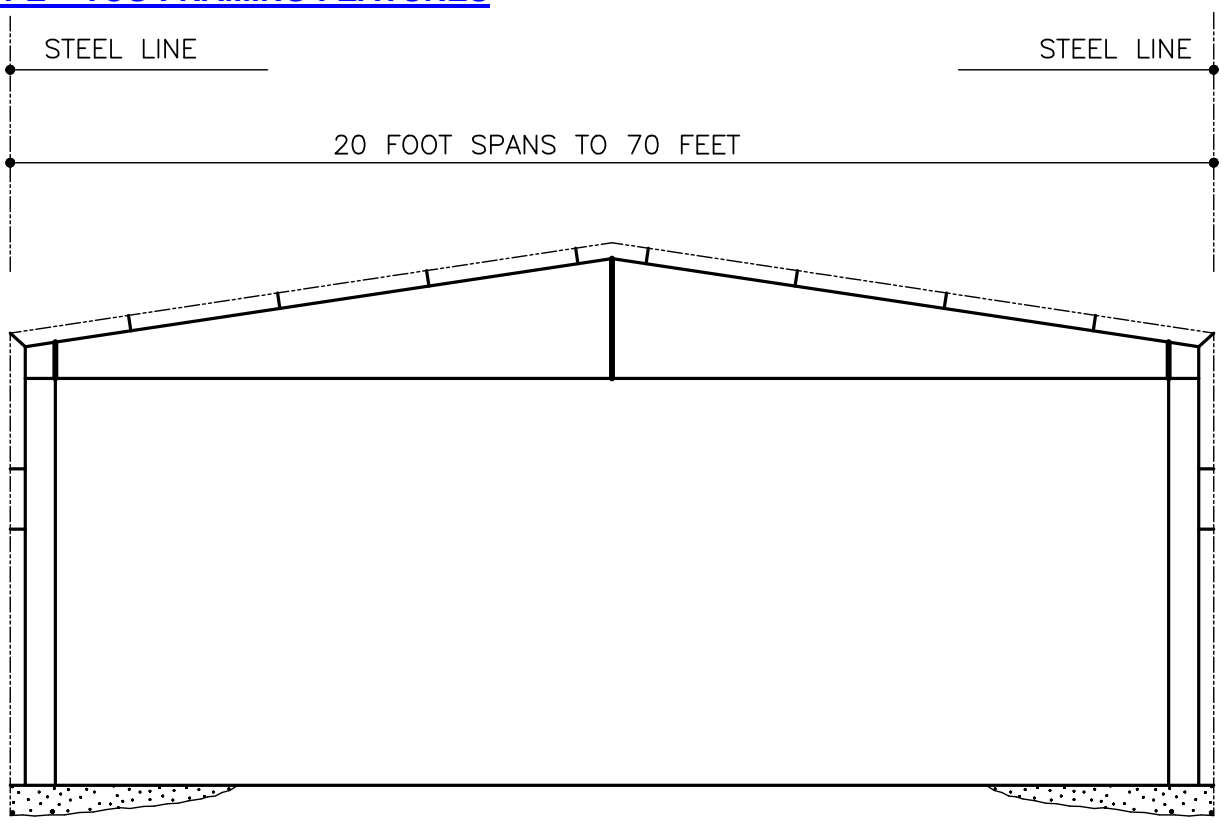
PF0030PE – RCG FRAME CLEARANCES CONTINUED



BLDG. WIDTH	NOM. EAVE HT.	10 PSF LIVE LOAD 20' BAY TRIB. LOAD = 200 PLF					30 PSF LIVE LOAD 30' BAY TRIB. LOAD = 900 PLF					50 PSF LIVE LOAD 32' BAY TRIB. LOAD = 1600 PLF				
		A	B	C	D	E	A	B	C	D	E	A	B	C	D	E
100'	10' 16"	96'-0"	6'-6"	11'-2"	94'-4"	20"	95'-4"	5'-11"	10'-10"	92'-0"	20"	95'-4"	5'-7"	10'-6"	90'-4"	
	12' 16"	96'-0"	8'-6"	13'-2"	94'-4"	20"	95'-4"	7'-11"	12'-10"	92'-0"	20"	95'-4"	7'-7"	12'-6"	90'-4"	
	16'	16"	96'-0"	12'-6"	17'-2"	94'-4"	20"	95'-4"	11'-11"	16'-10"	92'-0"	20"	95'-4"	11'-7"	16'-6"	90'-4"
	20'	16"	96'-0"	16'-6"	21'-2"	94'-4"	20"	95'-4"	15'-11"	20'-10"	92'-0"	20"	95'-4"	15'-7"	20'-6"	90'-4"
	24'	16"	96'-0"	20'-6"	25'-2"	94'-4"	20"	95'-4"	19'-11"	24'-10"	92'-0"	20"	95'-4"	19'-7"	24'-6"	90'-4"
	28'	16"	96'-0"	24'-6"	29'-2"	94'-4"	20"	95'-4"	23'-11"	28'-10"	92'-0"	20"	95'-4"	23'-7"	28'-6"	90'-4"
	30'	16"	96'-0"	26'-6"	31'-2"	94'-4"	20"	95'-4"	25'-11"	30'-10"	92'-0"	20"	95'-4"	25'-7"	30'-6"	90'-4"
120'	10' 16"	116'-0"	6'-6"	11'-8"	112'-0"	20"	115'-4"	6'-3"	11'-4"	110'-4"	20"	115'-4"	5'-5"	10'-10"	110'-4"	
	12'	16"	116'-0"	8'-6"	13'-8"	112'-0"	20"	115'-4"	8'-3"	13'-4"	110'-4"	20"	115'-4"	7'-5"	12'-10"	110'-4"
	16'	16"	116'-0"	12'-6"	17'-8"	112'-0"	20"	115'-4"	12'-3"	17'-4"	110'-4"	20"	115'-4"	11'-5"	16'-10"	110'-4"
	20'	16"	116'-0"	16'-6"	21'-8"	112'-0"	20"	115'-4"	16'-3"	21'-4"	110'-4"	20"	115'-4"	15'-5"	20'-10"	110'-4"
	24'	16"	116'-0"	20'-6"	25'-8"	112'-0"	20"	115'-4"	20'-3"	25'-4"	110'-4"	20"	115'-4"	19'-5"	24'-10"	110'-4"
	28' 16"	116'-0"	24'-6"	29'-8"	112'-0"	20"	115'-4"	24'-3"	29'-4"	110'-4"	20"	115'-4"	23'-5"	28'-10"	110'-4"	
	30'	16"	116'-0"	26'-6"	31'-8"	112'-0"	20"	115'-4"	26'-3"	31'-4"	110'-4"	20"	115'-4"	25'-5"	30'-10"	110'-4"

TCG – TAPERED BEAM, CLEAR SPAN, GABLE

PF0040PE – TCG FRAMING FEATURES



TCG FRAMING FEATURES

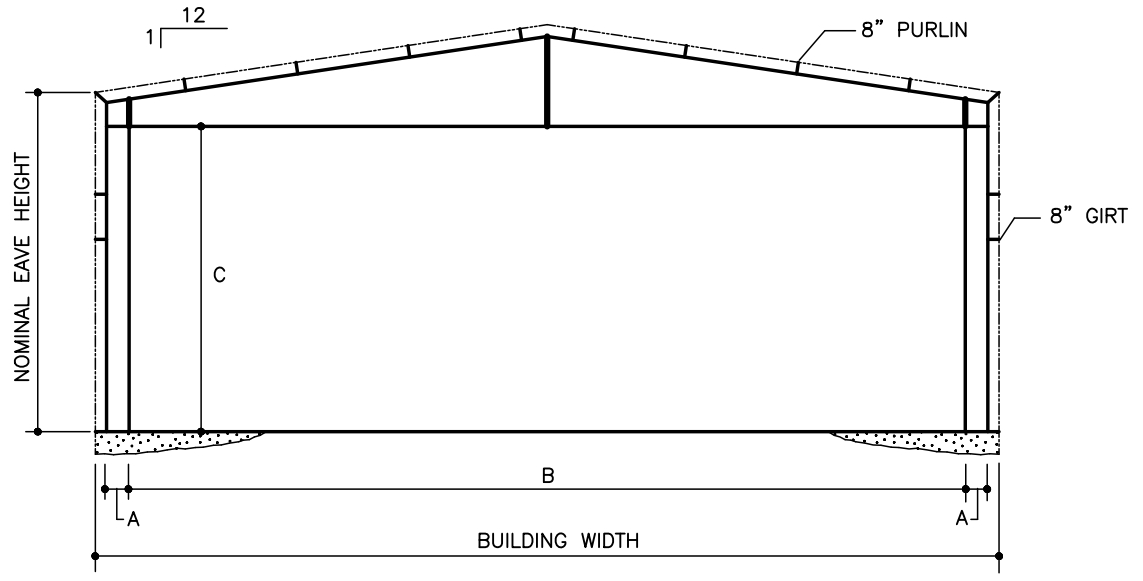
1. Tapered Beam (TCG) frames are an excellent solution for small buildings under 70 feet in width.
2. Straight columns provide maximum floor space and allow interior finishes to be easily installed.
3. TCG frames, with flat bottom rafter and straight columns, permit the easy installation of monorail and under-hung crane ways.
4. Single slope TCG frames are an excellent framing system for use as strip shopping centers.
5. **All numbers are preliminary and subject to change.** Please contact Nucor for specific building clearances.



PRODUCT AND ENGINEERING MANUAL

4.1 PRIMARY FRAMING

PF0050PE – TCG FRAME CLEARANCES



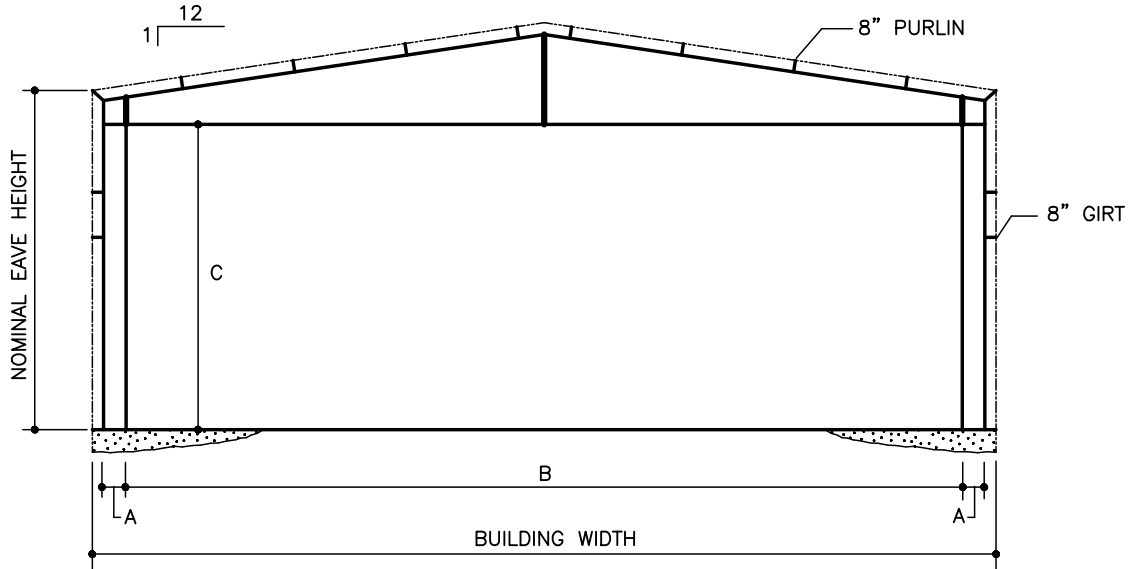
BLDG. WIDTH	NOM. EAVE HT.	10 PSF LIVE LOAD 20' BAY TRIB. LOAD = 200 PLF			30 PSF LIVE LOAD 30' BAY TRIB. LOAD = 900 PLF			50 PSF LIVE LOAD 32' BAY TRIB. LOAD = 1600 PLF		
		A	B	C	A	B	C	A	B	C
20'	10'	12" 16'	-8"	8'-5"	12"	16'-8"	8'-5"	12"	16'-8"	8'-5"
	12'	12"	16'-8"	10'-4"	12" 16'	-8"	10'-4" 12'	16'	-8"	10'-4"
	16'	12"	16'-8"	14'-3"	16" 16'	-0"	14'-1"	16" 16'	-0"	14'-1"
	20'	16"	16'-0"	18'-1"	20" 15'	-4"	17'-11"	20" 15'	-4"	17'-11"
	24'	16"	16'-0"	22'-0"	24" 14'	-8"	21'-8"	24" 14'	-8"	21'-8"
	28'	20"	15'-4"	25'-11"	24" 14'	-8"	25'-6" 24'	14'	-8"	25'-6"
30'	10'	12" 26'	-8"	8'-5"	12"	26'-8"	8'-5"	12"	26'-8"	8'-5"
	12'	12"	26'-8"	10'-4"	12" 26'	-8"	10'-4" 12'	26'	-8"	10'-4"
	16'	12"	26'-8"	14'-1"	16" 26'	-0"	14'-1"	16" 26'	-0"	14'-1"
	20'	16"	26'-0"	17'-11"	20" 25'	-4"	17'-11"	20" 25'	-4"	17'-11"
	24'	16"	26'-0"	21'-8"	24" 24'	-8"	21'-8"	24" 24'	-8"	21'-8"
	28'	20"	25'-4"	25'-5"	24" 24'	-8"	25'-5" 24'	24'	-8"	25'-5"
40'	10'	12" 36'	-8"	8'-5"	12"	36'-8"	8'-5"	16"	36'-0"	8'-1"
	12'	12" 36'	-8"	10'-4"	12"	36'-8"	10'-4"	20"	35'-4"	10'-0"
	16'	12"	36'-8"	14'-3"	16"	36'-0"	14'-1" 20'	35'	-4"	13'-11"
	20'	16"	36'-0"	18'-1"	20" 35'	-4"	17'-11"	24" 34'	-8"	17'-9"
	24'	16"	36'-0"	22'-0"	24"	34'-8"	21'-8" 24'	34'	-8"	21'-7"
	28'	20"	35'-4"	25'-11"	24" 34'	-8"	25'-5" 26'	34'	-4"	25'-5"
30'	20"	35'-4"	27'-10"	26"	34'-4"	27'-4" 26'	34'	-4"	27'-4"	

LAST REVISION
 DATE: 06/21/04
 BY: KMC CHK: AAJ

DETAIL NAME IF APPLICABLE
PF0050PE.DWG

4.1.8

PF0050PE – TCG FRAME CLEARANCES CONTINUED



BLDG. WIDTH	NOM. EAVE HT.	10 PSF LIVE LOAD 20' BAY TRIB. LOAD = 200 PLF			30 PSF LIVE LOAD 30' BAY TRIB. LOAD = 900 PLF			50 PSF LIVE LOAD 32' BAY TRIB. LOAD = 1600 PLF		
		A	B	C	A	B	C	A	B	C
50'	10'	12" 46'-8"	8'-5"	16"	46'-0"	8'-6"	26"	44'-4"	7'-11"	
	12'	12" 46'-8"	10'-4"	20"	45'-4"	10'-4"	26"	44'-4"	9'-10"	
	16'	16" 46'-0"	14'-3"	20"	45'-4"	14'-1"	26"	44'-4"	13'-9"	
	20'	16" 46'-0"	18'-1"	24"	44'-8"	17'-11"	26"	44'-4"	17'-7"	
	24'	16" 46'-0"	22'-0"	24"	44'-8"	21'-8"	26"	44'-4"	21'-6"	
	28'	20" 45'-4"	25'-11"	26"	44'-4"	25'-6"	26"	44'-4"	25'-5"	
	30'	20" 45'-4"	27'-10"	26"	44'-4"	27'-4"	26"	44'-4"	27'-4"	
60'	10'	12" 56'-8"	8'-5"	16"	56'-0"	8'-1"	26"	54'-4"	7'-11"	
	12'	12" 56'-8"	10'-4"	20"	55'-4"	10'-0"	26"	54'-4"	9'-10"	
	16'	16" 56'-0"	14'-3"	20"	55'-4"	13'-11"	26"	54'-4"	13'-9"	
	20'	16" 56'-0"	18'-1"	24"	54'-8"	17'-9"	26"	54'-4"	17'-7"	
	24'	16" 56'-0"	22'-0"	24"	54'-8"	21'-7"	26"	54'-4"	21'-6"	
	28'	20" 55'-4"	25'-11"	26"	54'-4"	25'-5"	26"	54'-4"	25'-5"	
	30'	20" 55'-4"	27'-10"	26"	54'-4"	27'-4"	26"	54'-4"	27'-4"	
70'	10'	12" 66'-8"	8'-5"	16"	65'-0"	7'-10"	30"	63'-8"	7'-5"	
	12'	12" 66'-8"	10'-4"	20"	65'-4"	9'-9"	30"	63'-8"	9'-5"	
	16'	16" 66'-0"	14'-3"	20"	65'-4"	13'-8"	30"	63'-8"	13'-5"	
	20'	16" 66'-0"	18'-1"	24"	64'-8"	17'-7"	30"	63'-8"	17'-5"	
	24'	16" 66'-0"	22'-0"	24"	64'-8"	21'-6"	30"	63'-8"	21'-5"	
	28'	20" 65'-4"	25'-11"	26"	64'-4"	25'-5"	30"	63'-8"	25'-5"	
	30'	20" 65'-4"	27'-10"	26"	64'-4"	27'-4"	30"	63'-8"	27'-5"	

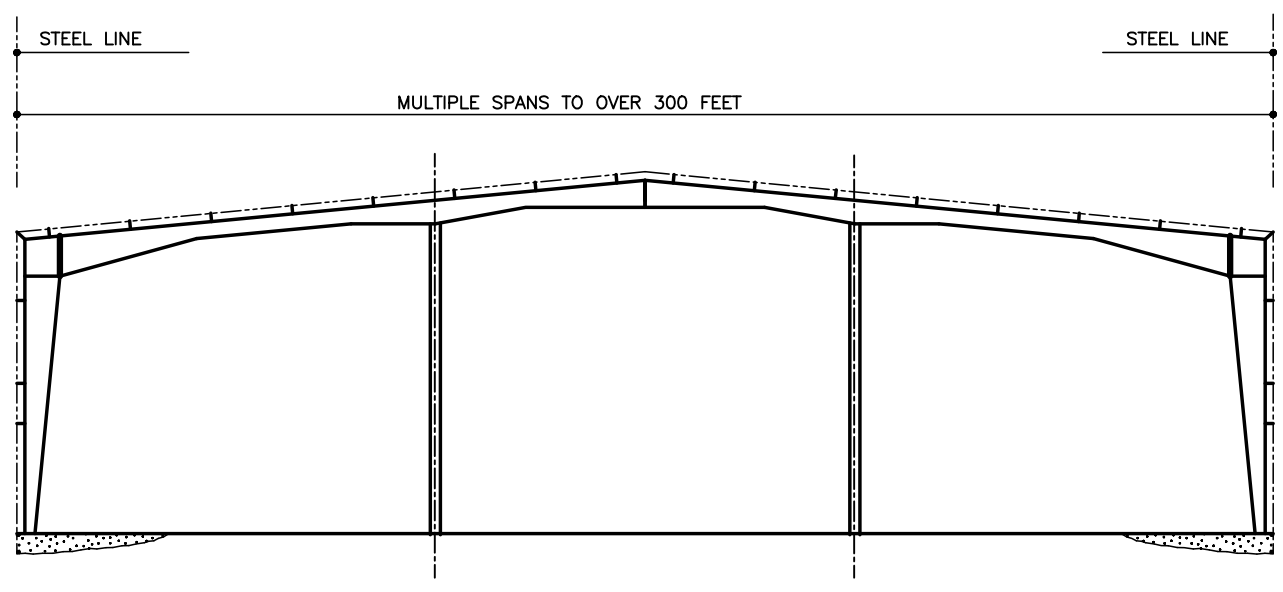
LAST REVISION
 DATE: 06/21/04
 BY: KMC CHK: AAJ

DETAIL NAME IF APPLICABLE
PF0050PE.DWG

4.1.9

RMG-X – RIGID FRAME, MODULAR, GABLE

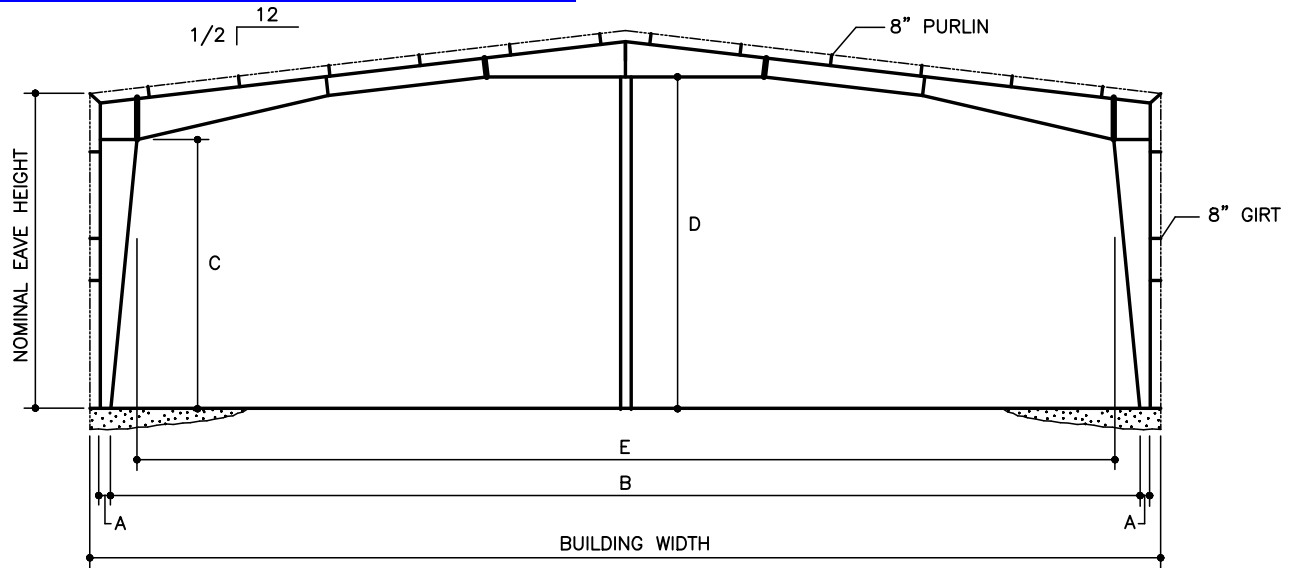
PF0060PE – RMG-X FRAMING FEATURES



RMG FRAMING FEATURES

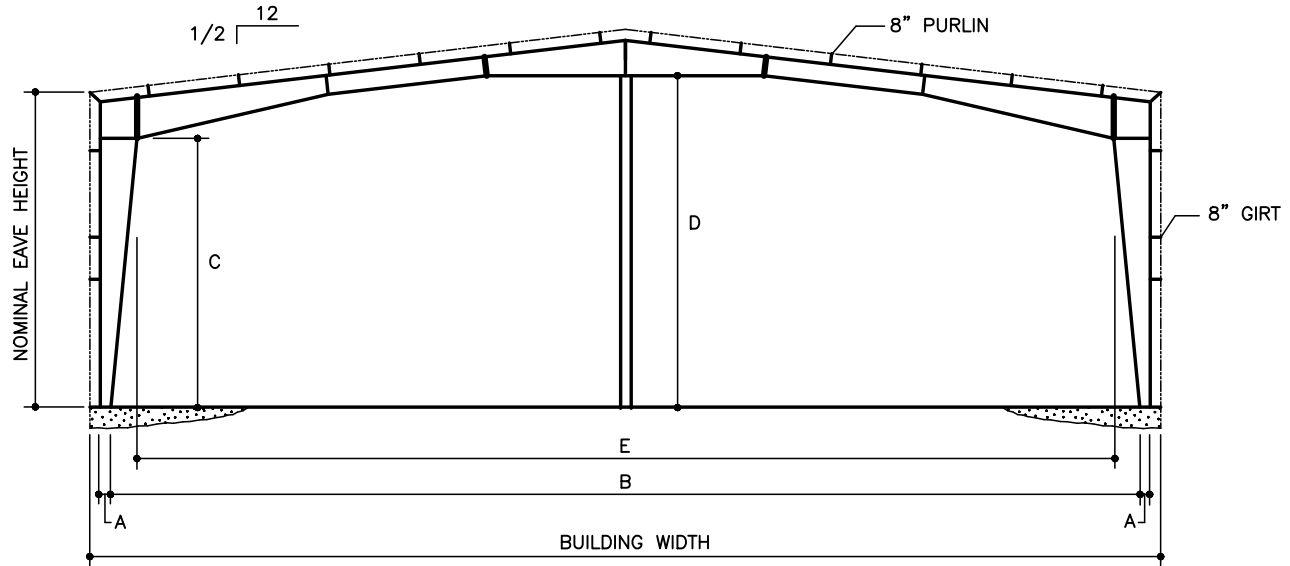
1. Rigid frames with interior columns (RMG-X [X = number of interior columns]) are ideal for wide buildings when some interior columns are acceptable.
2. RMG Rigid Frames may be used with Z-purlins for maximum economy on bay spacing of up to 40 feet or with bar joist roof purlins to achieve large, column-free areas of over 3000 square feet (60' span with 50' bays).
3. Standard interior columns are pipes, which provide maximum strength while using minimum floor space. Interior column bases may be recessed below the finished floor for a clean appearance.
4. **All numbers are preliminary and subject to change.** Please contact Nucor for specific building clearances.

PF0070PE – RMG-1 FRAME CLEARANCES



BLDG. WIDTH	NOM. EAVE HT.	10 PSF LIVE LOAD 20' BAY TRIB. LOAD = 200 PLF					30 PSF LIVE LOAD 30' BAY TRIB. LOAD = 900 PLF					50 PSF LIVE LOAD 32' BAY TRIB. LOAD = 1600 PLF				
		A	B	C	D	E	A	B	C	D	E	A	B	C	D	E
		70' 2@35'	10'	12"	66'-8"	8'-4"	9'-5"	67'-4"	12"	66'-8"	8'-0"	9'-1"	66'-0"	12"	66'-8"	7'-11"
	12'	12"	66'-8"	10'-3"	11'-5"	66'-11"	12"	66'-8"	9'-11"	11'-2"	65'-8"	12"	66'-8"	9'-9"	11'-0"	65'-0"
	16'	12"	66'-8"	13'-11"	15'-4"	66'-1"	12"	66'-8"	13'-7"	15'-3"	65'-0"	12"	66'-8"	13'-6"	15'-1"	64'-6"
	20'	12"	66'-8"	17'-8"	19'-3"	65'-4"	12"	66'-8"	20'-11"	23'-4"	63'-8"	12"	66'-8"	20'-11"	23'-2"	63'-5"
	24'	12"	66'-8"	21'-4"	23'-2"	64'-6"	12"	66'-8"	20'-11"	23'-4"	63'-8"	12"	66'-8"	20'-11"	23'-2"	63'-5"
	28'	12"	66'-8"	25'-1"	27'-1"	63'-9"	12"	66'-8"	24'-7"	27'-5"	63'-0"	12"	66'-8"	24'-7"	27'-3"	62'-11"
	30'	12"	66'-8"	26'-12"	29'-0"	63'-4"	12"	66'-8"	26'-5"	29'-5"	62'-8"	12"	66'-8"	26'-5"	29'-3"	62'-8"
90' 2@45'	10'	12"	86'-8"	7'-12"	9'-4"	86'-8"	12"	86'-8"	7'-11"	9'-1"	85'-8"	12"	86'-8"	7'-9"	8'-8"	85'-4"
	12'	12"	86'-8"	9'-10"	11'-3"	86'-4"	12"	86'-8"	9'-10"	11'-0"	85'-5"	12"	86'-8"	9'-8"	10'-8"	85'-2"
	16'	12"	86'-8"	13'-8"	15'-0"	85'-9"	12"	86'-8"	13'-7"	14'-10"	85'-0"	12"	86'-8"	13'-6"	14'-7"	84'-10"
	20'	12"	86'-8"	17'-5"	18'-10"	85'-2"	12"	86'-8"	17'-5"	18'-8"	84'-8"	12"	86'-8"	17'-4"	18'-6"	84'-6"
	24'	12"	86'-8"	21'-3"	22'-7"	84'-7"	12"	86'-8"	21'-3"	22'-6"	84'-3"	12"	86'-8"	21'-2"	22'-5"	84'-2"
	28'	12"	86'-8"	25'-0"	26'-4"	83'-11"	12"	86'-8"	25'-0"	26'-4"	83'-10"	12"	86'-8"	25'-0"	26'-4"	83'-10"
	30'	12"	86'-8"	26'-11"	28'-3"	83'-8"	12"	86'-8"	26'-11"	28'-3"	83'-8"	12"	86'-8"	26'-11"	28'-3"	83'-8"
110' 2@55'	10'	12"	106'-8"	8'-1"	9'-9"	106'-2"	12"	106'-8"	7'-9"	8'-11"	105'-4"	12"	106'-8"	7'-6"	8'-3"	104'-9"
	12'	12"	106'-8"	10'-0"	11'-9"	106'-0"	12"	106'-8"	9'-7"	10'-12"	105'-2"	12"	106'-8"	9'-5"	10'-4"	104'-8"
	16'	12"	106'-8"	13'-9"	15'-8"	105'-5"	12"	106'-8"	13'-4"	15'-0"	104'-9"	12"	106'-8"	13'-4"	14'-5"	104'-5"
	20'	12"	106'-8"	17'-5"	19'-7"	105'-0"	12"	106'-8"	17'-1"	19'-1"	104'-6"	12"	106'-8"	17'-2"	18'-6"	104'-3"
	24'	12"	106'-8"	21'-2"	23'-6"	104'-5"	12"	106'-8"	20'-11"	23'-2"	104'-2"	12"	106'-8"	21'-1"	22'-7"	104'-0"
	28'	12"	106'-8"	24'-11"	27'-5"	104'-0"	12"	106'-8"	24'-8"	27'-3"	103'-9"	12"	106'-8"	25'-0"	26'-8"	103'-9"
	30'	12"	106'-8"	26'-9"	29'-5"	103'-8"	12"	106'-8"	26'-6"	29'-4"	103'-8"	12"	106'-8"	26'-11"	28'-9"	103'-8"

PF0070PE – RMG-1 FRAME CLEARANCES CONTINUED



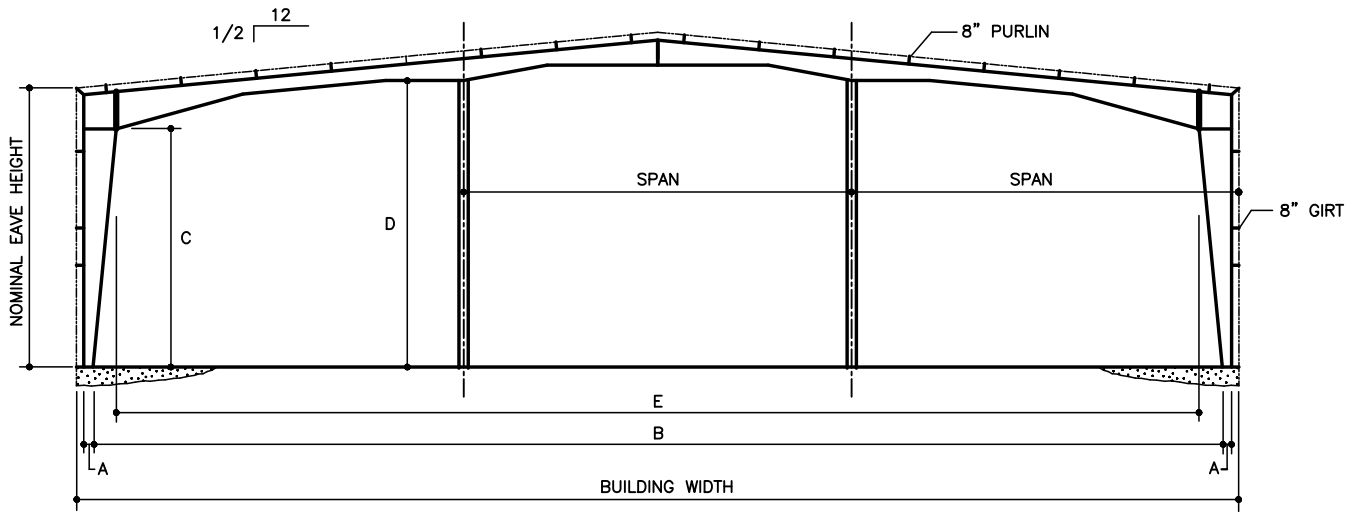
BLDG. WIDTH	NOM. EAVE HT.	10 PSF LIVE LOAD 20' BAY TRIB. LOAD = 200 PLF					30 PSF LIVE LOAD 30' BAY TRIB. LOAD = 900 PLF					50 PSF LIVE LOAD 32' BAY TRIB. LOAD = 1600 PLF				
		A	B	C	D	E	A	B	C	D	E	A	B	C	D	E
130' 2@65'	10'	12"	126'-8"	7'-11"	9'-11"	125'-8"	12"	126'-8"	7'-4"	9'-4"	25'-0"	12"	126'-8"	7'-1"	8'-11"	124'-0"
	12'	12"	126'-8"	9'-9"	11'-10"	125'-4"	12"	126'-8"	9'-3"	11'-3"	124'-9"	12"	126'-8"	9'-0"	10'-10"	123'-9"
	16'	12"	126'-8"	13'-6"	15'-7"	124'-9"	12"	126'-8"	13'-1"	15'-0"	124'-4"	12"	126'-8"	12'-10"	14'-8"	123'-6"
	20'	12"	126'-8"	17'-2"	19'-5"	124'-3"	12"	126'-8"	17'-0"	19'-0"	124'-0"	12"	126'-8"	16'-8"	18'-6"	123'-2"
	24'	12"	126'-8"	20'-11"	23'-2"	123'-8"	12"	126'-8"	20'-9"	22'-9"	123'-5"	12"	126'-8"	20'-6"	22'-4"	122'-9"
	28'	12"	126'-8"	24'-8"	27'-0"	123'-1"	12"	126'-8"	24'-7"	26'-7"	123'-0"	12"	126'-8"	24'-4"	26'-2"	122'-6"
	30'	12"	126'-8"	26'-6"	28'-11"	122'-9"	12"	126'-8"	26'-6"	28'-6"	122'-9"	12"	126'-8"	26'-3"	28'-0"	122'-4"
150' 2@75'	10'	12"	146'-8"	7'-5"	10'-0"	144'-8"	12"	146'-8"	7'-0"	8'-6"	143'-8"	12"	146'-8"	6'-11"	8'-3"	143'-8"
	12'	12"	146'-8"	9'-4"	11'-10"	144'-6"	12"	146'-8"	9'-0"	10'-6"	143'-7"	12"	146'-8"	8'-11"	10'-3"	143'-8"
	16'	12"	146'-8"	13'-2"	15'-8"	144'-3"	12"	146'-8"	13'-0"	14'-6"	143'-7"	12"	146'-8"	12'-11"	14'-2"	143'-8"
	20'	12"	146'-8"	17'-0"	19'-6"	144'-0"	12"	146'-8"	16'-10"	18'-5"	143'-6"	12"	146'-8"	16'-11"	18'-2"	143'-6"
	24'	12"	146'-8"	20'-10"	23'-5"	143'-9"	12"	146'-8"	20'-10"	22'-5"	143'-5"	12"	146'-8"	20'-11"	22'-2"	143'-6"
	28'	12"	146'-8"	24'-8"	27'-3"	143'-5"	12"	146'-8"	24'-10"	26'-5"	143'-4"	12"	146'-8"	24'-11"	26'-1"	143'-4"
	30'	12"	146'-8"	26'-6"	29'-2"	143'-4"	12"	146'-8"	26'-9"	28'-4"	143'-4"	12"	146'-8"	26'-11"	28'-1"	143'-4"



PRODUCT AND ENGINEERING MANUAL

4.1 PRIMARY FRAMING

PF0080PE – RMG-2 FRAME CLEARANCES



BLDG. WIDTH	NOM. EAVE HT.	10 PSF LIVE LOAD 20' BAY TRIB. LOAD = 200 PLF					30 PSF LIVE LOAD 30' BAY TRIB. LOAD = 900 PLF					50 PSF LIVE LOAD 32' BAY TRIB. LOAD = 1600 PLF				
		A	B	C	D	E	A	B	C	D	E	A	B	C	D	E
120' 3@40'	10'	12"	116'-8"	8'-4"	10'-0"	117'-4"	12"	116'-8"	7'-9"	9'-1"	115'-4"	12"	116'-8"	7'-9"	8'-6"	115'-4"
	12'	12"	116'-8"	10'-4"	12'-0"	117'-0"	12"	116'-8"	9'-7"	11'-1"	115'-0"	12"	116'-8"	9'-7"	10'-6"	115'-0"
	16'	12"	116'-8"	14'-0"	16'-0"	116'-2"	12"	116'-8"	13'-4"	15'-1"	114'-6"	12"	116'-8"	13'-4"	14'-6"	114'-6"
	20'	12"	116'-8"	17'-8"	20'-0"	115'-6"	12"	116'-8"	17'-1"	19'-1"	114'-0"	12"	116'-8"	17'-1"	18'-7"	114'-0"
	24'	12"	116'-8"	21'-4"	23'-10"	114'-9"	12"	116'-8"	20'-10"	23'-1"	113'-5"	12"	116'-8"	20'-10"	22'-7"	113'-5"
	28'	12"	116'-8"	25'-1"	27'-10"	114'-0"	12"	116'-8"	24'-7"	27'-1"	113'-0"	12"	116'-8"	24'-7"	26'-7"	113'-0"
	30'	12"	116'-8"	26'-11"	29'-10"	113'-8"	12"	116'-8"	26'-5"	29'-1"	112'-8"	12"	116'-8"	26'-5"	28'-8"	112'-8"
140' 3@ 46'-8"	10'	12"	136'-8"	8'-0"	9'-11"	136'-0"	12"	136'-8"	7'-5"	8'-9"	134'-8"	12"	136'-8"	7'-5"	8'-4"	134'-8"
	12'	12"	136'-8"	9'-11"	11'-10"	135'-9"	12"	136'-8"	9'-4"	10'-9"	134'-6"	12"	136'-8"	9'-4"	10'-4"	134'-6"
	16'	12"	136'-8"	13'-9"	15'-8"	135'-3"	12"	136'-8"	13'-3"	14'-9"	134'-3"	12"	136'-8"	13'-3"	14'-4"	134'-3"
	20'	12"	136'-8"	17'-6"	19'-6"	134'-9"	12"	136'-8"	17'-1"	18'-9"	134'-0"	12"	136'-8"	17'-1"	18'-4"	134'-0"
	24'	12"	136'-8"	21'-3"	23'-5"	134'-4"	12"	136'-8"	20'-12"	22'-9"	133'-9"	12"	136'-8"	20'-12"	22'-5"	133'-9"
	28'	12"	136'-8"	25'-0"	27'-3"	134'-0"	12"	136'-8"	24'-10"	26'-9"	133'-5"	12"	136'-8"	24'-10"	26'-5"	133'-5"
	30'	12"	136'-8"	26'-11"	29'-2"	133'-8"	12"	136'-8"	26'-9"	28'-9"	133'-4"	12"	136'-8"	26'-9"	28'-5"	133'-4"

LAST REVISION
 DATE: 06/21/04
 BY: KMC CHK: AAJ

DETAIL NAME IF APPLICABLE
PF0080PE.DWG

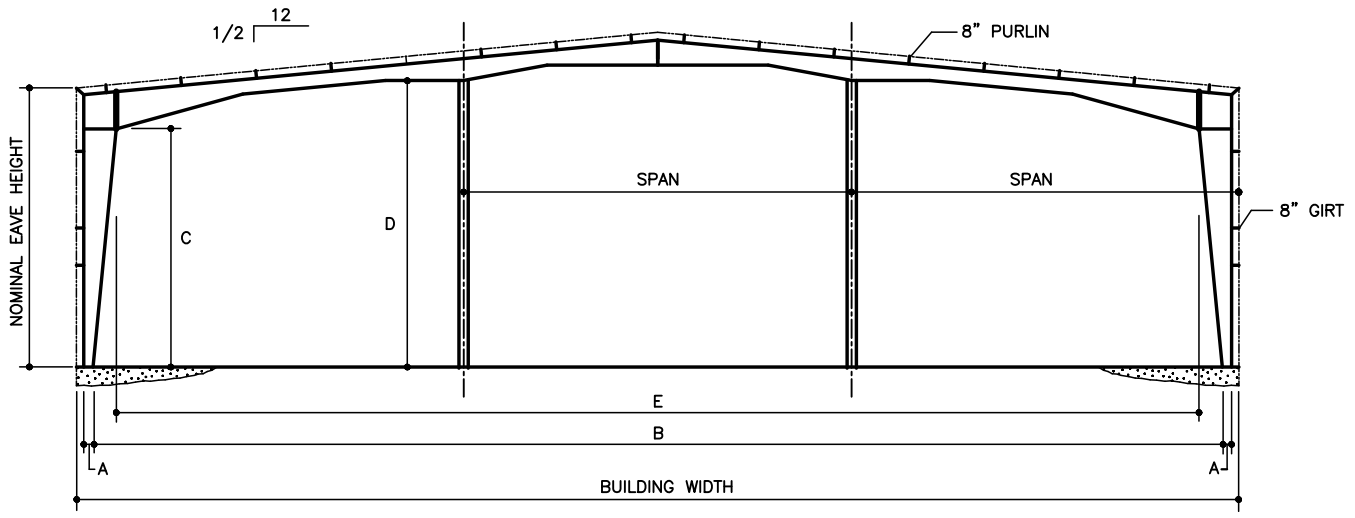
4.1.13



PRODUCT AND ENGINEERING MANUAL

4.1 PRIMARY FRAMING

PF0080PE – RMG-2 FRAME CLEARANCES CONTINUED



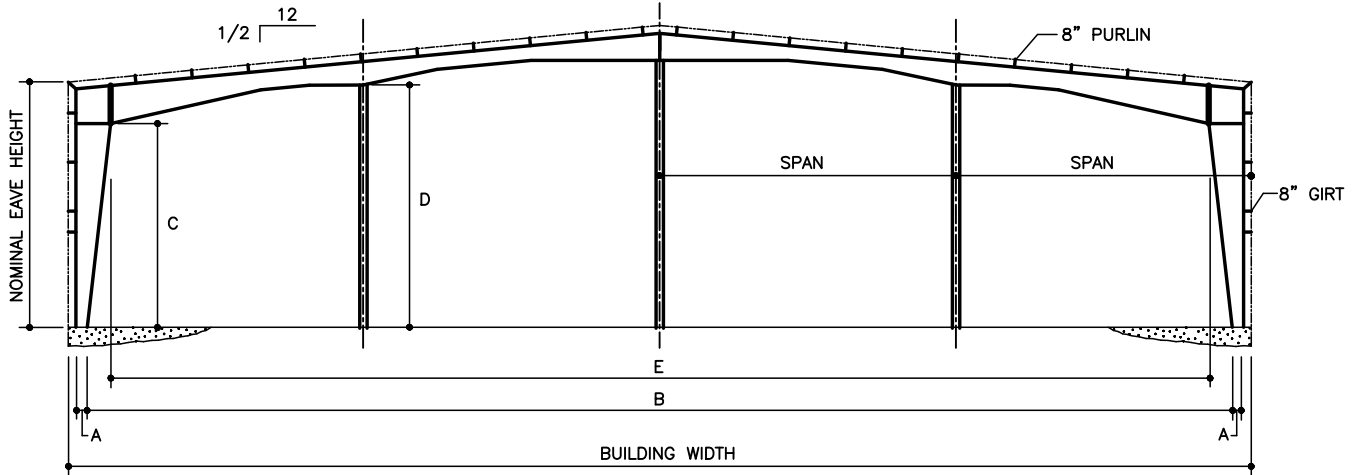
BLDG. WIDTH	NOM. EAVE HT.	10 PSF LIVE LOAD 20' BAY TRIB. LOAD = 200 PLF					30 PSF LIVE LOAD 30' BAY TRIB. LOAD = 900 PLF					50 PSF LIVE LOAD 32' BAY TRIB. LOAD = 1600 PLF				
		A	B	C	D	E	A	B	C	D	E	A	B	C	D	E
160' 3@ 53'-4"	10'	12"	156'-8"	7'-9"	9'-8"	155'-4"	12"	156'-8"	7'-3"	9'-0"	154'-4"	12"	156'-8"	7'-3"	8'-2"	54'-4"
	12'	12"	156'-8"	9'-8"	11'-8"	155'-1"	12"	156'-8"	9'-2"	11'-0"	154'-2"	12"	156'-8"	9'-2"	10'-2"	154'-2"
	16'	12"	156'-8"	13'-5"	15'-6"	154'-9"	12"	156'-8"	13'-1"	14'-10"	154'-0"	12"	156'-8"	13'-1"	14'-2"	154'-0"
	20'	12"	156'-8"	17'-3"	19'-4"	154'-4"	12"	156'-8"	17'-0"	18'-10"	153'-9"	16"	156'-0"	17'-0"	18'-2"	153'-9"
	24'	12"	156'-8"	21'-1"	23'-3"	153'-9"	16"	156'-0"	20'-10"	22'-10"	153'-7"	16"	156'-0"	20'-10"	22'-2"	153'-7"
	28'	12"	156'-8"	25'-0"	27'-1"	153'-6"	16"	156'-0"	24'-8"	26'-9"	153'-5"	16"	156'-0"	24'-8"	26'-2"	153'-5"
30'	12"	156'-8"	26'-9"	29'-0"	153'-4"	16"	156'-0"	26'-7"	28'-8"	153'-4"	16"	156'-0"	26'-7"	28'-2"	153'-4"	
180' 3@60'	10'	12"	176'-8"	7'-7"	10'-0"	175'-0"	12"	176'-8"	7'-5"	9'-0"	174'-8"	12"	176'-8"	6'-9"	7'-6"	73'-4"
	12'	12"	176'-8"	9'-6"	11'-12"	174'-9"	12"	176'-8"	9'-4"	10'-10"	174'-6"	12"	176'-8"	8'-10"	9'-6"	173'-4"
	16'	12"	176'-8"	13'-5"	15'-11"	174'-7"	12"	176'-8"	13'-3"	14'-8"	174'-3"	16"	176'-0"	12'-10"	13'-6"	173'-4"
	20'	12"	176'-8"	17'-3"	19'-11"	174'-4"	16"	176'-0"	17'-2"	18'-5"	174'-0"	16"	176'-0"	16'-10"	17'-7"	173'-4"
	24'	12"	176'-8"	21'-1"	23'-10"	174'-0"	16"	176'-0"	21'-1"	22'-2"	173'-9"	20"	175'-4"	20'-11"	21'-7"	173'-4"
	28'	12"	176'-8"	25'-0"	27'-10"	173'-9"	16"	176'-0"	25'-0"	25'-11"	173'-5"	20"	175'-4"	24'-11"	25'-7"	173'-4"
30'	12"	176'-8"	27'-0"	29'-10"	173'-8"	16"	176'-0"	26'-11"	27'-10"	173'-4"	20"	175'-4"	26'-11"	27'-8"	173'-4"	

LAST REVISION
 DATE: 06/21/04
 BY: KMC CHK: AAJ

DETAIL NAME IF APPLICABLE
PF0080PE.DWG

4.1.14

PF0090PE – RMG-3 FRAME CLEARANCES



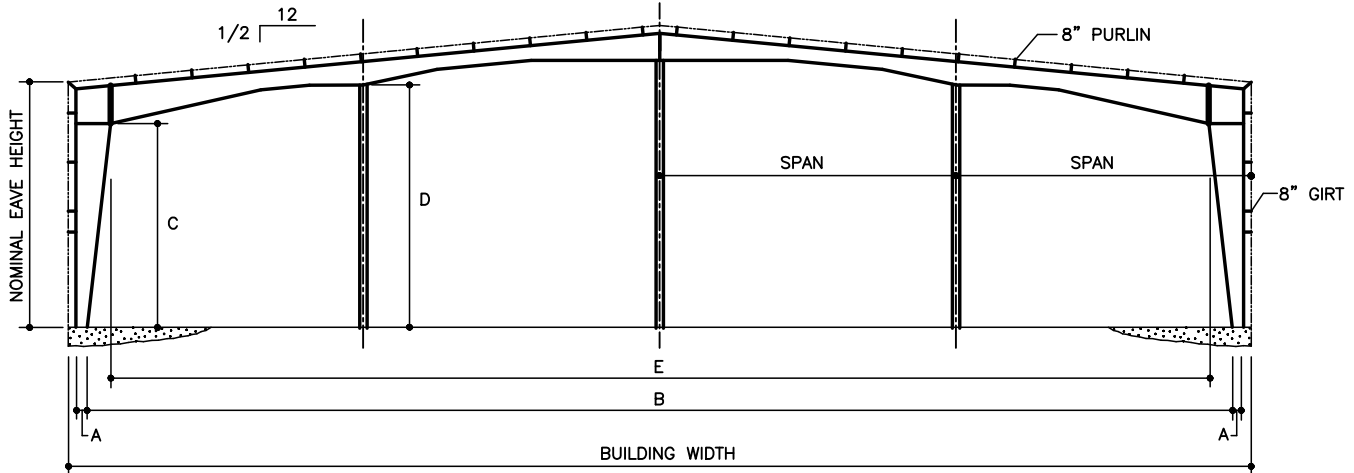
BLDG. WIDTH	NOM. EAVE HT.	10 PSF LIVE LOAD 20' BAY TRIB. LOAD = 200 PLF					30 PSF LIVE LOAD 30' BAY TRIB. LOAD = 900 PLF					50 PSF LIVE LOAD 32' BAY TRIB. LOAD = 1600 PLF				
		A	B	C	D	E	A	B	C	D	E	A	B	C	D	E
160' 4@40'	10'	12"	156'-8"	8'-0"	9'-8"	156'-0"	12"	156'-8"	7'-9"	9'-4"	155'-4"	12"	156'-8"	7'-9"	8'-0"	155'-4"
	12'	12"	156'-8"	9'-11"	11'-8"	155'-9"	12"	156'-8"	9'-7"	11'-3"	155'-0"	12"	156'-8"	9'-7"	10'-0"	155'-0"
	16'	12"	156'-8"	13'-9"	15'-8"	155'-3"	12"	156'-8"	13'-4"	15'-2"	154'-6"	12"	156'-8"	13'-4"	14'-3"	154'-6"
	20'	12"	156'-8"	17'-6"	19'-8"	154'-9"	12"	156'-8"	17'-1"	19'-0"	154'-0"	12"	156'-8"	17'-1"	18'-5"	154'-0"
	24'	12"	156'-8"	21'-3"	23'-8"	154'-4"	12"	156'-8"	20'-10"	23'-0"	153'-5"	12"	156'-8"	20'-10"	22'-7"	153'-5"
	28'	12"	156'-8"	25'-0"	27'-8"	154'-0"	12"	156'-8"	24'-7"	26'-10"	153'-0"	12"	156'-8"	24'-7"	26'-9"	153'-0"
30'	12"	156'-8"	26'-11"	29'-8"	153'-8"	12"	156'-8"	26'-5"	28'-10"	152'-8"	12"	156'-8"	26'-5"	28'-10"	152'-8"	
180' 4@45'	10'	12"	176'-8"	8'-0"	9'-10"	176'-0"	12"	176'-8"	7'-9"	8'-8"	175'-4"	12"	176'-8"	6'-11"	7'-8"	173'-8"
	12'	12"	176'-8"	9'-11"	11'-10"	175'-8"	12"	176'-8"	9'-7"	10'-9"	175'-0"	12"	176'-8"	8'-10"	9'-9"	173'-6"
	16'	12"	176'-8"	13'-7"	15'-9"	175'-0"	12"	176'-8"	13'-3"	14'-10"	174'-4"	12"	176'-8"	12'-8"	13'-10"	173'-2"
	20'	12"	176'-8"	17'-3"	19'-8"	174'-4"	12"	176'-8"	16'-11"	18'-10"	173'-8"	12"	176'-8"	16'-6"	17'-11"	172'-9"
	24'	12"	176'-8"	20'-11"	23'-7"	173'-8"	12"	176'-8"	20'-7"	22'-11"	173'-0"	12"	176'-8"	20'-4"	22'-0"	172'-6"
	28'	12"	176'-8"	24'-7"	27'-7"	173'-0"	12"	176'-8"	24'-3"	27'-0"	172'-4"	12"	176'-8"	24'-2"	26'-1"	172'-2"
30'	12"	176'-8"	26'-5"	29'-6"	172'-8"	12"	176'-8"	26'-1"	29'-0"	172'-0"	12"	176'-8"	26'-1"	28'-2"	172'-0"	
200' 4@50'	10'	12"	196'-8"	8'-0"	10'-0"	196'-0"	12"	196'-8"	7'-9"	9'-3"	194'-4"	12"	196'-8"	7'-3"	8'-0"	194'-4"
	12'	12"	196'-8"	9'-11"	12'-0"	195'-8"	12"	196'-8"	9'-7"	11'-2"	194'-1"	12"	196'-8"	9'-2"	10'-0"	194'-1"
	16'	12"	196'-8"	13'-7"	15'-10"	195'-0"	12"	196'-8"	13'-3"	15'-1"	193'-7"	12"	196'-8"	12'-11"	14'-0"	193'-7"
	20'	12"	196'-8"	17'-3"	19'-8"	194'-4"	12"	196'-8"	16'-12"	19'-0"	193'-2"	12"	196'-8"	16'-8"	18'-0"	193'-2"
	24'	12"	196'-8"	20'-11"	23'-6"	193'-8"	12"	196'-8"	20'-7"	23'-0"	192'-8"	12"	196'-8"	20'-6"	22'-0"	192'-8"
	28'	12"	196'-8"	24'-7"	27'-4"	193'-0"	12"	196'-8"	24'-3"	26'-11"	192'-2"	12"	196'-8"	24'-3"	26'-0"	192'-2"
30'	12"	196'-8"	26'-5"	29'-3"	192'-8"	12"	196'-8"	26'-1"	28'-11"	192'-0"	12"	196'-8"	26'-1"	28'-0"	192'-0"	

LAST REVISION
 DATE: 06/21/04
 BY: KMC CHK: AAJ

DETAIL NAME IF APPLICABLE
PF0090PE.DWG

4.1.15

PF0090PE – RMG-3 FRAME CLEARANCES CONTINUED



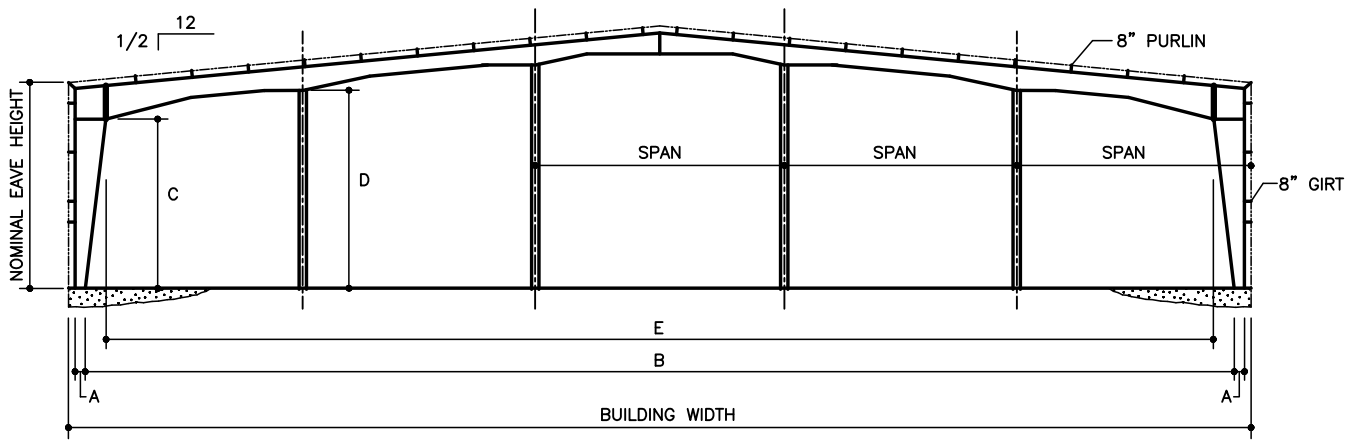
BLDG. WIDTH	NOM. EAVE HT.	10 PSF LIVE LOAD 20' BAY TRIB. LOAD = 200 PLF					30 PSF LIVE LOAD 30' BAY TRIB. LOAD = 900 PLF					50 PSF LIVE LOAD 32' BAY TRIB. LOAD = 1600 PLF				
		A	B	C	D	E	A	B	C	D	E	A	B	C	D	E
220' 4@55'	10'	12"	216'-8"	8'-0"	9'-11"	216'-0"	12"	216'-8"	7'-9"	8'-7"	215'-4"	12"	216'-8"	7'-3"	8'-3"	214'-4"
	12'	12"	216'-8"	9'-11"	12'-0"	215'-9"	12"	216'-8"	9'-8"	10'-7"	215'-1"	12"	216'-8"	9'-2"	10'-3"	214'-2"
	16'	12"	216'-8"	13'-8"	15'-9"	215'-2"	12"	216'-8"	13'-5"	14'-7"	214'-7"	12"	216'-8"	13'-1"	14'-3"	214'-0"
	20'	12"	216'-8"	17'-5"	19'-7"	214'-8"	12"	216'-8"	17'-2"	18'-7"	214'-2"	12"	216'-8"	17'-0"	18'-3"	213'-8"
	24'	12"	216'-8"	21'-2"	23'-6"	214'-1"	12"	216'-8"	21'-0"	22'-7"	213'-8"	12"	216'-8"	20'-10"	22'-3"	213'-4"
	28'	12"	216'-8"	25'-0"	27'-4"	213'-7"	12"	216'-8"	24'-9"	26'-7"	213'-2"	12"	216'-8"	24'-8"	26'-3"	213'-1"
	30'	12"	216'-8"	26'-9"	29'-3"	213'-4"	12"	216'-8"	26'-7"	28'-7"	213'-0"	12"	216'-8"	26'-7"	28'-3"	213'-0"
240' 4@60'	10'	12"	236'-8"	7'-9"	9'-10"	235'-4"	12"	236'-8"	7'-1"	8'-10"	234'-0"	12"	236'-8"	7'-0"	7'-0"	233'-8"
	12'	12"	236'-8"	9'-8"	11'-10"	235'-1"	12"	236'-8"	9'-1"	10'-9"	234'-0"	12"	236'-8"	8'-11"	9'-0"	233'-8"
	16'	12"	236'-8"	13'-5"	15'-10"	234'-9"	12"	236'-8"	13'-0"	14'-9"	233'-9"	12"	236'-8"	13'-0"	12'-11"	233'-8"
	20'	12"	236'-8"	17'-3"	19'-10"	234'-4"	12"	236'-8"	17'-0"	18'-8"	233'-8"	12"	236'-8"	17'-0"	16'-11"	233'-8"
	24'	12"	236'-8"	21'-1"	23'-10"	234'-0"	12"	236'-8"	21'-0"	22'-7"	233'-6"	12"	236'-8"	21'-0"	20'-10"	233'-8"
	28'	12"	236'-8"	25'-0"	27'-10"	233'-6"	12"	236'-8"	25'-0"	26'-6"	233'-4"	12"	236'-8"	25'-0"	24'-10"	233'-8"
	30'	12"	236'-8"	26'-9"	29'-10"	233'-4"	12"	236'-8"	26'-9"	28'-6"	233'-4"	12"	236'-8"	26'-9"	26'-10"	233'-8"



PRODUCT AND ENGINEERING MANUAL

4.1 PRIMARY FRAMING

PF0100PE – RMG-4 FRAME CLEARANCES



BLDG. WIDTH	NOM. EAVE HT.	10 PSF LIVE LOAD 20' BAY TRIB. LOAD = 200 PLF					30 PSF LIVE LOAD 30' BAY TRIB. LOAD = 900 PLF					50 PSF LIVE LOAD 32' BAY TRIB. LOAD = 1600 PLF				
		A	B	C	D	E	A	B	C	D	E	A	B	C	D	E
200' 5@40'	10'	12"	196'-8"	7'-9"	9'-8"	195'-4"	12"	196'-8"	7'-3"	8'-7"	195'-4"	12"	196'-8"	6'-11"	8'-6"	194'-4"
	12'	12"	196'-8"	9'-8"	11'-7"	195'-2"	12"	196'-8"	9'-1"	10'-8"	195'-0"	12"	196'-8"	8'-10"	10'-6"	194'-1"
	16'	12"	196'-8"	13'-6"	15'-6"	194'-9"	12"	196'-8"	12'-11"	14'-8"	194'-4"	12"	196'-8"	12'-8"	14'-7"	193'-7"
	20'	12"	196'-8"	17'-4"	19'-6"	194'-6"	12"	196'-8"	16'-8"	18'-9"	193'-8"	12"	196'-8"	16'-5"	18'-8"	193'-2"
	24'	12"	196'-8"	21'-2"	23'-5"	194'-2"	12"	196'-8"	20'-6"	22'-9"	193'-0"	12"	196'-8"	20'-3"	22'-9"	192'-8"
	28'	12"	196'-8"	25'-0"	27'-4"	193'-9"	12"	196'-8"	24'-3"	26'-10"	192'-4"	12"	196'-8"	24'-1"	26'-9"	192'-2"
250' 5@50'	10'	12"	246'-8"	7'-3"	9'-9"	244'-4"	12"	246'-8"	7'-3"	9'-0"	244'-4"	12"	246'-8"	7'-0"	8'-0"	244'-4"
	12'	12"	246'-8"	9'-3"	11'-9"	244'-1"	12"	246'-8"	9'-2"	11'-0"	244'-1"	12"	246'-8"	9'-0"	10'-2"	244'-3"
	16'	12"	246'-8"	13'-2"	15'-9"	243'-7"	12"	246'-8"	13'-0"	15'-0"	243'-7"	12"	246'-8"	13'-0"	14'-4"	244'-1"
	20'	12"	246'-8"	17'-1"	19'-9"	243'-2"	12"	246'-8"	16'-11"	19'-0"	243'-2"	12"	246'-8"	17'-0"	18'-6"	244'-0"
	24'	12"	246'-8"	21'-0"	23'-9"	242'-8"	12"	246'-8"	20'-9"	23'-0"	242'-8"	12"	246'-8"	21'-0"	22'-8"	243'-9"
	28'	12"	246'-8"	25'-0"	27'-9"	242'-2"	12"	246'-8"	24'-7"	27'-0"	242'-2"	12"	246'-8"	25'-0"	26'-10"	243'-9"
300' 5@60'	10'	12"	296'-8"	7'-3"	9'-8"	294'-4"	12"	296'-8"	7'-3"	9'-8"	294'-4"	12"	296'-8"	6'-11"	9'-4"	293'-8"
	12'	12"	296'-8"	9'-3"	11'-7"	294'-1"	12"	296'-8"	9'-3"	11'-7"	294'-1"	12"	296'-8"	8'-10"	11'-4"	293'-6"
	16'	12"	296'-8"	13'-2"	15'-6"	293'-7"	12"	296'-8"	13'-2"	15'-6"	293'-7"	12"	296'-8"	12'-8"	15'-4"	293'-2"
	20'	12"	296'-8"	17'-1"	19'-6"	293'-2"	12"	296'-8"	17'-1"	19'-6"	293'-2"	12"	296'-8"	16'-6"	19'-4"	292'-9"
	24'	12"	296'-8"	21'-1"	23'-5"	292'-8"	12"	296'-8"	21'-1"	23'-5"	292'-8"	12"	296'-8"	20'-4"	23'-4"	292'-6"
	28'	12"	296'-8"	25'-0"	27'-4"	292'-2"	12"	296'-8"	25'-0"	27'-4"	292'-2"	12"	296'-8"	24'-2"	27'-4"	292'-2"
30'	12"	296'-8"	27'-0"	29'-4"	292'-0"	12"	296'-8"	27'-0"	29'-4"	292'-0"	12"	296'-8"	26'-1"	29'-4"	292'-0"	

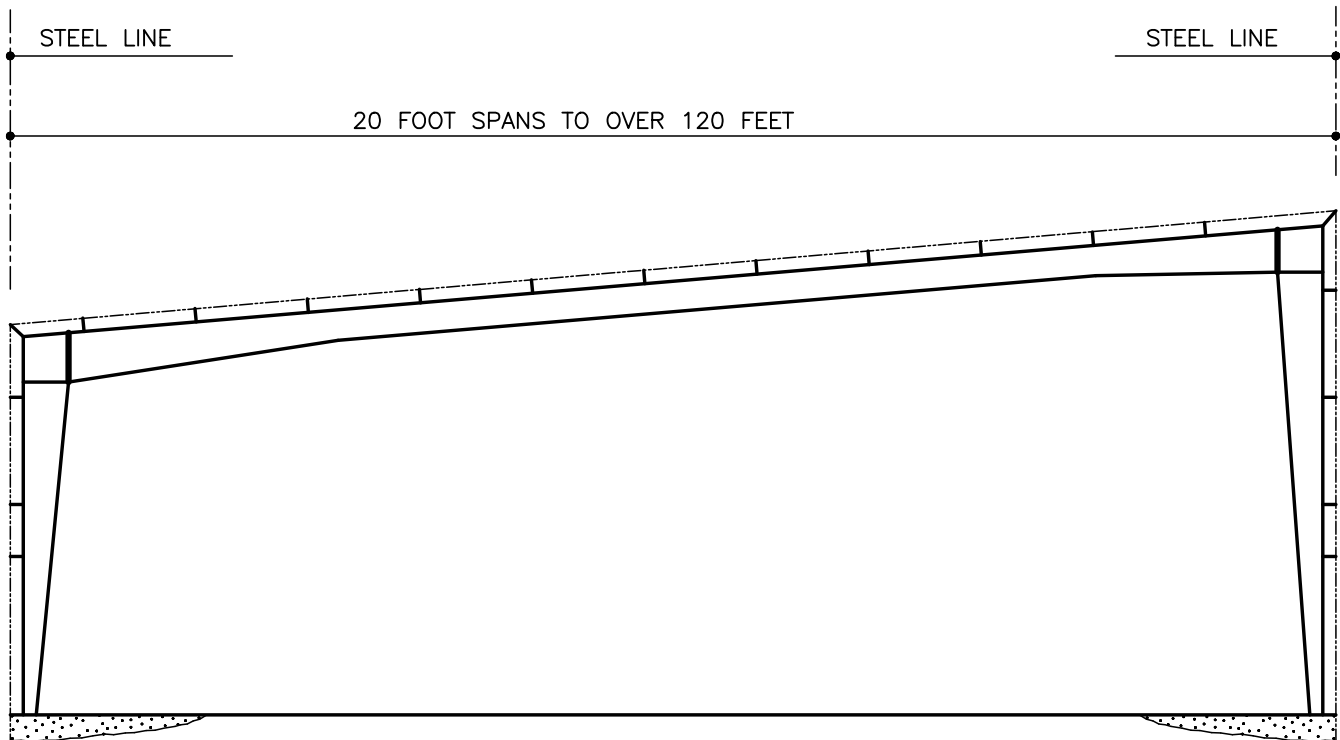
LAST REVISION
 DATE: 02/09/01
 BY: CDM CHK: RJF

DETAIL NAME IF APPLICABLE
PF0100PE.DWG

4.1.17

RCS – RIGID FRAME, CLEAR SPAN, SINGLE SLOPE

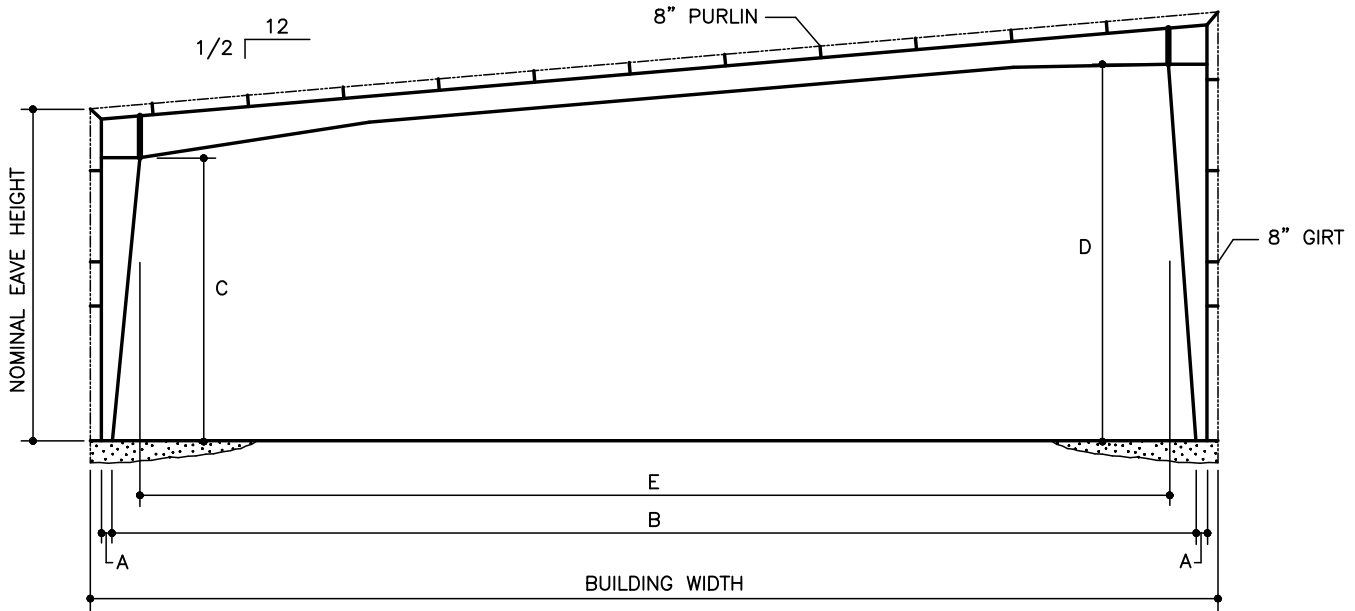
PF0110PE – RCS FRAMING FEATURES



RCS FRAMING FEATURES

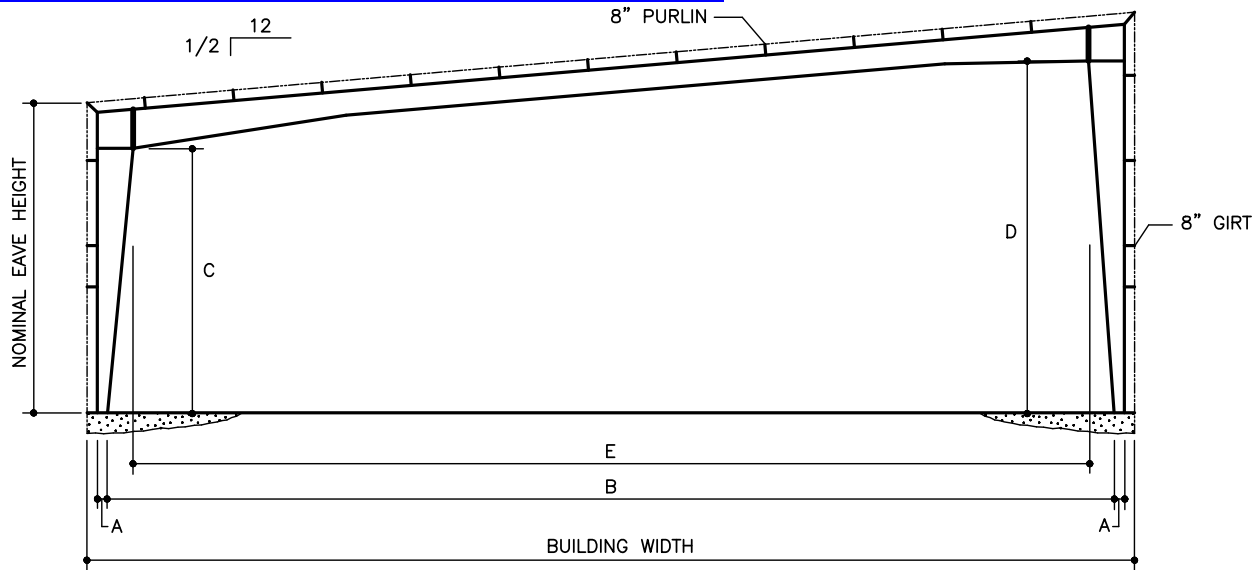
1. RCS Single Slope buildings are ideal for structures that have drainage restrictions such as a strip shopping center, or architectural requirements prohibiting a gable appearance (requires the use of endwall parapets). Also good for future sidewall expansion.
2. RCS Single Slope frames are economical due to the efficient use of tapered members and high strength steel.
3. RCS Single Slope frames maximize the clearance available in a building.
4. **All numbers are preliminary and subject to change.** Please contact Nucor for specific building clearances.

PF0120PE – RCS FRAME CLEARANCES



BLDG. WIDTH	NOM. EAVE HT.	10 PSF LIVE LOAD 20' BAY TRIB. LOAD = 200 PLF					30 PSF LIVE LOAD 30' BAY TRIB. LOAD = 900 PLF					50 PSF LIVE LOAD 32' BAY TRIB. LOAD = 1600 PLF				
		A	B	C	D	E	A	B	C	D	E	A	B	C	D	E
20'	10'	12"	16'-8"	8'-0"	8'-9"	16'-0"	12"	16'-8"	8'-0"	8'-9"	16'-0"	12"	16'-8"	8'-0"	8'-9"	16'-0"
	12'	12"	16'-8"	10'-0"	10'-8"	15'-10"	12"	16'-8"	10'-0"	10'-8"	15'-10"	12"	16'-8"	10'-0"	10'-8"	15'-10"
	16'	12"	16'-8"	13'-10"	14'-6"	15'-6"	12"	16'-8"	13'-10"	14'-6"	15'-6"	12"	16'-8"	13'-10"	14'-6"	15'-6"
	20'	12"	16'-8"	17'-8"	18'-3"	15'-2"	12"	16'-8"	17'-8"	18'-3"	15'-2"	12"	16'-8"	17'-8"	18'-3"	15'-2"
	24'	12"	16'-8"	21'-6"	22'-1"	14'-10"	12"	16'-8"	21'-6"	22'-1"	14'-10"	12"	16'-8"	21'-6"	22'-1"	14'-10"
	28'	12"	16'-8"	25'-4"	25'-11"	14'-6"	12"	16'-8"	25'-4"	25'-11"	14'-6"	12"	16'-8"	25'-4"	25'-11"	14'-6"
	30'	12"	16'-8"	27'-3"	27'-10"	14'-4"	12"	16'-8"	27'-3"	27'-10"	14'-4"	12"	16'-8"	27'-3"	27'-10"	14'-4"
40'	10'	12"	36'-8"	8'-0"	9'-7"	36'-0"	12"	36'-8"	7'-9"	9'-2"	35'-4"	12"	36'-8"	7'-9"	9'-3"	35'-4"
	12'	12"	36'-8"	10'-0"	11'-5"	35'-9"	12"	36'-8"	9'-8"	11'-1"	35'-2"	12"	36'-8"	9'-8"	11'-1"	35'-2"
	16'	12"	36'-8"	13'-9"	15'-2"	35'-3"	12"	36'-8"	13'-6"	15'-0"	34'-10"	12"	36'-8"	13'-6"	15'-0"	34'-10"
	20'	12"	36'-8"	17'-6"	19'-0"	34'-10"	12"	36'-8"	17'-4"	18'-9"	34'-6"	12"	36'-8"	17'-4"	18'-9"	34'-6"
	24'	12"	36'-8"	21'-3"	22'-9"	34'-4"	12"	36'-8"	21'-2"	22'-7"	34'-2"	12"	36'-8"	21'-2"	22'-7"	34'-2"
	28'	12"	36'-8"	25'-0"	26'-6"	33'-11"	12"	36'-8"	25'-0"	26'-5"	33'-10"	12"	36'-8"	25'-0"	26'-5"	33'-10"
	30'	12"	36'-8"	27'-0"	28'-4"	33'-8"	12"	36'-8"	27'-0"	28'-4"	33'-8"	12"	36'-8"	27'-0"	28'-4"	33'-8"
60'	10'	12"	56'-8"	7'-3"	10'-0"	54'-10"	12"	56'-8"	7'-3"	9'-7"	54'-4"	12"	56'-8"	6'-5"	8'-8"	52'-8"
	12'	12"	56'-8"	9'-2"	11'-11"	54'-7"	12"	56'-8"	9'-2"	11'-5"	54'-2"	12"	56'-8"	8'-5"	10'-7"	52'-7"
	16'	12"	56'-8"	13'-0"	15'-8"	54'-2"	12"	56'-8"	13'-0"	15'-3"	53'-10"	12"	56'-8"	12'-5"	14'-6"	52'-6"
	20'	12"	56'-8"	16'-10"	19'-4"	53'-9"	12"	56'-8"	16'-10"	19'-1"	53'-6"	12"	56'-8"	16'-5"	18'-5"	52'-5"
	24'	12"	56'-8"	20'-8"	23'-1"	53'-3"	12"	56'-8"	20'-8"	22'-11"	53'-2"	12"	56'-8"	20'-5"	22'-4"	52'-3"
	28'	12"	56'-8"	24'-6"	26'-10"	52'-10"	12"	56'-8"	24'-6"	26'-9"	52'-10"	12"	56'-8"	24'-5"	26'-2"	52'-2"
	30'	12"	56'-8"	26'-5"	28'-8"	52'-8"	12"	56'-8"	26'-5"	28'-8"	52'-8"	12"	56'-8"	26'-5"	28'-2"	52'-2"

PF0120PE – RCS FRAME CLEARANCES CONTINUED



BLDG. WIDTH	NOM. EAVE HT.	10 PSF LIVE LOAD 20' BAY TRIB. LOAD = 200 PLF					30 PSF LIVE LOAD 30' BAY TRIB. LOAD = 900 PLF					50 PSF LIVE LOAD 32' BAY TRIB. LOAD = 1600 PLF				
		A	B	C	D	E	A	B	C	D	E	A	B	C	D	E
80'	10'	12"	76'-8"	7'-3"	10'-4"	74'-4"	16"	76'-0"	6'-5"	9'-0"	72'-2"	16"	76'-0"	6'-0"	8'-1"	70'-4"
	12'	12"	76'-8"	9'-3"	12'-3"	74'-3"	16"	76'-0"	8'-5"	11'-0"	72'-2"	16"	76'-0"	8'-0"	10'-2"	70'-4"
	16'	12"	76'-8"	13'-3"	16'-1"	74'-0"	16"	76'-0"	12'-5"	15'-0"	72'-2"	16"	76'-0"	11'-10"	14'-2"	70'-5"
	20'	12"	76'-8"	17'-3"	20'-0"	73'-11"	16"	76'-0"	16'-5"	19'-0"	72'-2"	16"	76'-0"	15'-9"	18'-3"	70'-6"
	24'	12"	76'-8"	21'-3"	23'-9"	73'-9"	16"	76'-0"	20'-5"	23'-0"	72'-2"	16"	76'-0"	19'-8"	22'-4"	70'-7"
	28'	12"	76'-8"	25'-3"	27'-7"	73'-7"	16"	76'-0"	24'-5"	27'-0"	72'-2"	16"	76'-0"	23'-7"	26'-5"	70'-7"
	30'	12"	76'-8"	27'-3"	29'-6"	73'-6"	16"	76'-0"	26'-5"	29'-0"	72'-2"	16"	76'-0"	25'-6"	28'-5"	70'-8"
100'	10'	12"	96'-8"	7'-3"	10'-10"	94'-0"	16"	96'-0"	6'-0"	9'-3"	91'-2"	20"	95'-4"	5'-2"	8'-3"	89'-4"
	12'	12"	96'-8"	9'-2"	12'-9"	93'-10"	16"	96'-0"	8'-0"	11'-3"	91'-2"	20"	95'-4"	7'-2"	10'-3"	89'-4"
	16'	12"	96'-8"	13'-0"	16'-6"	93'-5"	16"	96'-0"	12'-0"	15'-3"	91'-2"	20"	95'-4"	11'-3"	14'-3"	89'-4"
	20'	12"	96'-8"	16'-10"	20'-4"	93'-0"	16"	96'-0"	16'-0"	19'-3"	91'-2"	20"	95'-4"	15'-4"	18'-3"	89'-4"
	24'	12"	96'-8"	20'-8"	24'-1"	92'-8"	16"	96'-0"	20'-0"	23'-3"	91'-2"	20"	95'-4"	19'-5"	22'-3"	89'-4"
	28'	12"	96'-8"	24'-6"	28'-0"	92'-4"	16"	96'-0"	24'-0"	27'-3"	91'-2"	20"	95'-4"	23'-5"	26'-3"	89'-4"
	30'	12"	96'-8"	26'-5"	29'-10"	92'-2"	16"	96'-0"	26'-0"	29'-3"	91'-2"	20"	95'-4"	25'-6"	28'-3"	89'-4"
120'	10'	12"	116'-8"	6'-5"	10'-8"	112'-2"	20"	115'-4"	4'-6"	9'-1"	110'-4"	20"	115'-4"	4'-6"	9'-1"	108'-8"
	12'	12"	116'-8"	8'-5"	12'-8"	112'-2"	20"	115'-4"	6'-6"	11'-1"	110'-2"	20"	115'-4"	6'-6"	11'-1"	108'-8"
	16'	12"	116'-8"	12'-5"	16'-8"	112'-2"	20"	115'-4"	10'-6"	15'-1"	109'-9"	24"	114'-8"	10'-6"	15'-1"	108'-8"
	20'	12"	116'-8"	16'-5"	20'-8"	112'-2"	20"	115'-4"	14'-6"	19'-1"	109'-6"	24"	114'-8"	14'-6"	19'-1"	108'-8"
	24'	12"	116'-8"	20'-5"	24'-8"	112'-2"	20"	115'-4"	18'-6"	23'-1"	109'-2"	24"	114'-8"	18'-6"	23'-1"	108'-8"
	28'	12"	116'-8"	24'-5"	28'-8"	112'-2"	20"	115'-4"	22'-6"	27'-1"	108'-9"	24"	114'-8"	22'-6"	27'-1"	108'-8"
	30'	12"	116'-8"	26'-5"	30'-8"	112'-2"	20"	115'-4"	24'-6"	29'-1"	108'-8"	24"	114'-8"	24'-6"	29'-1"	108'-8"

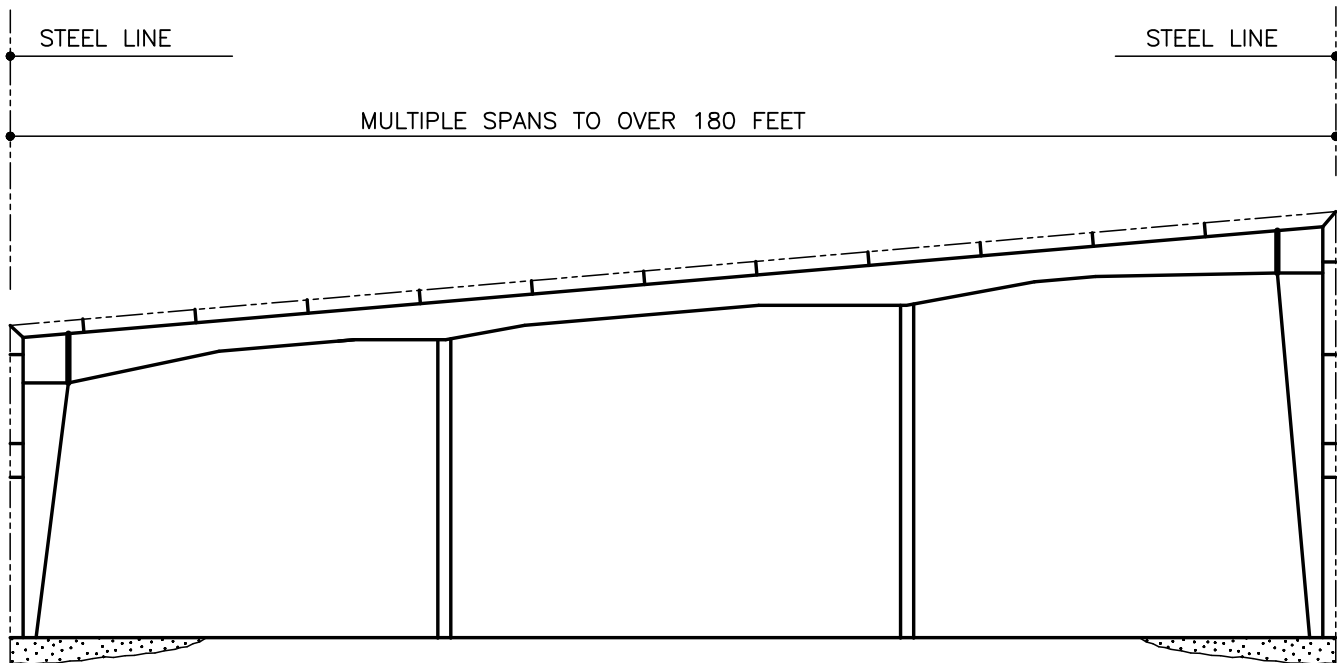
LAST REVISION
 DATE: 06/21/04
 BY: KMC_CHK: AAJ

DETAIL NAME IF APPLICABLE
PF0120PE.DWG

4.1.20

RMS-X – RIGID FRAME, MODULAR, SINGLE SLOPE

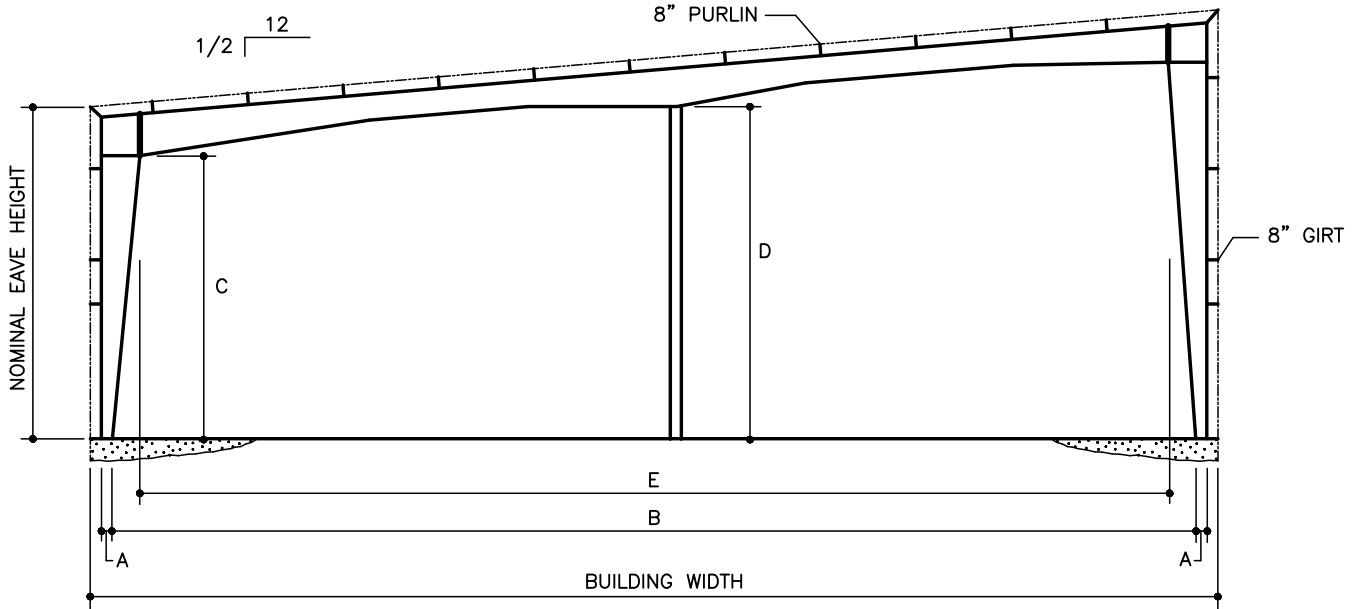
PF0130PE – RMS-X FRAMING FEATURES



RMS FRAMING FEATURES

1. Single Slope frames with interior columns (RMS-X [X = number of interior columns]) are ideal for wide structures that have drainage restrictions such as a strip shopping center, or architectural requirements prohibiting a gable appearance (requires the use of endwall parapets).
2. RMS Single Slope frames may be used with Z-purlins for maximum economy on bay spacings of up to 40 feet or with bar joists to achieve large, column-free areas of over 3000 square feet (60' span with 50' bays).
3. Standard interior columns are pipes, which provide maximum strength while using minimum floor space. Interior column bases may be recessed below the finished floor for a clean appearance.
4. **All numbers are preliminary and subject to change.** Please contact Nucor for specific building clearances.

PF0140PE – RMS-1 FRAME CLEARANCES



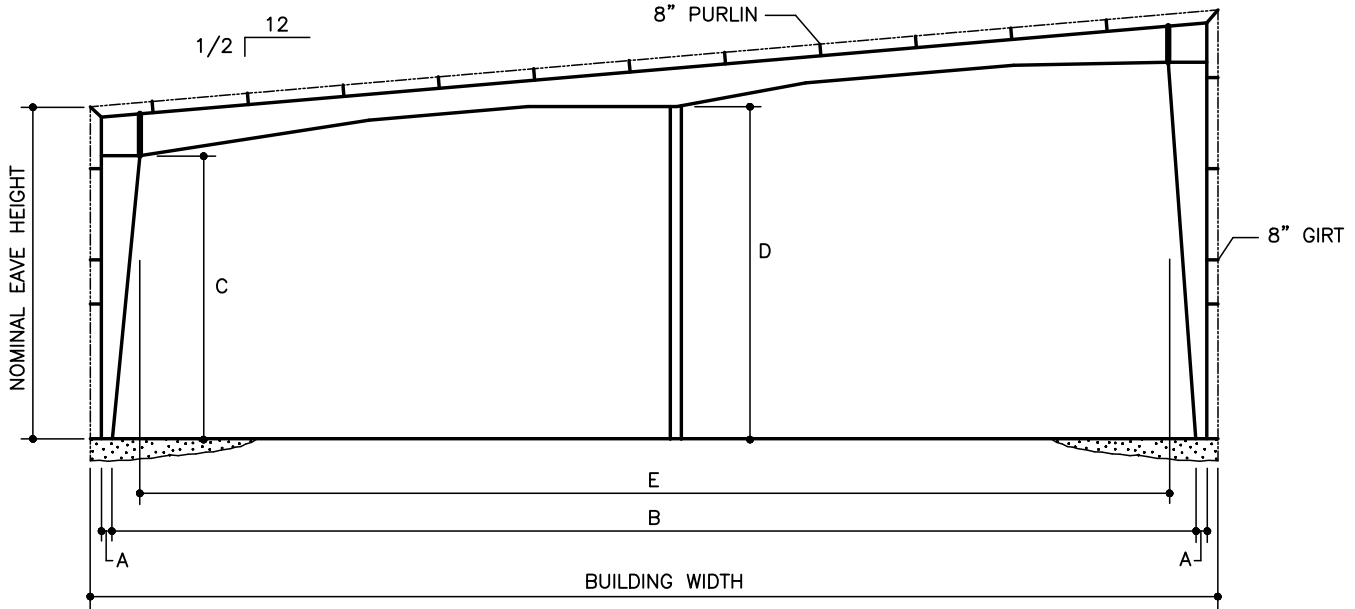
BLDG. WIDTH	NOM. EAVE HT.	10 PSF LIVE LOAD 20' BAY TRIB. LOAD = 200 PLF					30 PSF LIVE LOAD 30' BAY TRIB. LOAD = 900 PLF					50 PSF LIVE LOAD 32' BAY TRIB. LOAD = 1600 PLF				
		A	B	C	D	E	A	B	C	D	E	A	B	C	D	E
70' 2@35'	10'	12"	66'-8"	8'-4"	9'-9"	66'-6"	12"	66'-8"	8'-4"	9'-9"	66'-4"	12"	66'-8"	8'-2"	9'-1"	65'-10"
	12'	12"	66'-8"	10'-2"	11'-9"	66'-1"	12"	66'-8"	10'-2"	11'-9"	66'-0"	12"	66'-8"	10'-0"	11'-1"	65'-6"
	16'	12"	66'-8"	13'-10"	15'-8"	65'-4"	12"	66'-8"	13'-10"	15'-8"	65'-3"	12"	66'-8"	13'-8"	15'-1"	64'-11"
	20'	12"	66'-8"	17'-6"	19'-7"	64'-8"	12"	66'-8"	17'-5"	19'-7"	64'-7"	12"	66'-8"	17'-4"	19'-1"	64'-4"
	24'	12"	66'-8"	21'-2"	23'-6"	63'-11"	12"	66'-8"	21'-0"	23'-6"	63'-10"	12"	66'-8"	21'-0"	23'-1"	63'-9"
	28'	12"	66'-8"	24'-10"	27'-6"	63'-2"	12"	66'-8"	24'-8"	27'-6"	63'-2"	12"	66'-8"	24'-8"	27'-1"	63'-1"
	30'	12"	66'-8"	26'-7"	29'-5"	62'-10"	12"	66'-8"	26'-5"	29'-5"	62'-10"	12"	66'-8"	26'-5"	29'-1"	62'-10"
90' 2@45'	10'	12"	86'-8"	8'-4"	10'-0"	86'-4"	12"	86'-8"	8'-0"	9'-10"	86'-0"	12"	86'-8"	7'-11"	8'-8"	85'-8"
	12'	12"	86'-8"	10'-2"	12'-0"	86'-0"	12"	86'-8"	9'-11"	11'-10"	85'-7"	12"	86'-8"	9'-9"	10'-8"	85'-4"
	16'	12"	86'-8"	13'-11"	16'-0"	85'-3"	12"	86'-8"	13'-7"	15'-9"	84'-11"	12"	86'-8"	13'-6"	14'-9"	84'-8"
	20'	12"	86'-8"	17'-7"	19'-9"	84'-7"	12"	86'-8"	17'-3"	19'-8"	84'-2"	12"	86'-8"	17'-2"	18'-11"	84'-0"
	24'	12"	86'-8"	21'-3"	23'-8"	83'-10"	12"	86'-8"	20'-11"	23'-7"	83'-5"	12"	86'-8"	20'-11"	23'-0"	83'-4"
	28'	12"	86'-8"	24'-11"	27'-7"	83'-2"	12"	86'-8"	24'-7"	27'-7"	82'-8"	12"	86'-8"	24'-7"	27'-0"	82'-8"
	30'	12"	86'-8"	26'-9"	29'-6"	82'-10"	12"	86'-8"	26'-5"	29'-6"	82'-4"	12"	86'-8"	26'-5"	29'-1"	82'-4"
110' 2@55'	10'	12"	106'-8"	7'-11"	10'-1"	105'-6"	12"	106'-8"	7'-11"	9'-1"	105'-4"	12"	106'-8"	7'-9"	8'-9"	105'-0"
	12'	12"	106'-8"	9'-9"	12'-1"	105'-2"	12"	106'-8"	9'-9"	11'-2"	105'-0"	12"	106'-8"	9'-7"	10'-10"	104'-8"
	16'	12"	106'-8"	13'-7"	16'-1"	104'-8"	12"	106'-8"	13'-5"	15'-3"	104'-4"	12"	106'-8"	13'-4"	14'-10"	104'-1"
	20'	12"	106'-8"	17'-4"	20'-2"	104'-0"	12"	106'-8"	17'-2"	19'-4"	103'-9"	12"	106'-8"	17'-1"	18'-11"	103'-7"
	24'	12"	106'-8"	21'-1"	24'-2"	103'-6"	12"	106'-8"	20'-11"	23'-5"	103'-1"	12"	106'-8"	20'-10"	23'-0"	103'-0"
	28'	12"	106'-8"	24'-11"	28'-2"	103'-0"	12"	106'-8"	24'-7"	27'-7"	102'-5"	12"	106'-8"	24'-7"	27'-1"	102'-5"
	30'	12"	106'-8"	26'-9"	30'-2"	102'-8"	12"	106'-8"	26'-5"	29'-7"	102'-2"	12"	106'-8"	26'-5"	29'-1"	102'-2"

LAST REVISION
 DATE: 06/21/04
 BY: KMC CHK: AAJ

DETAIL NAME IF APPLICABLE
PF0140PE.DWG

4.1.22

PF0140PE – RMS-1 FRAME CLEARANCES CONTINUED



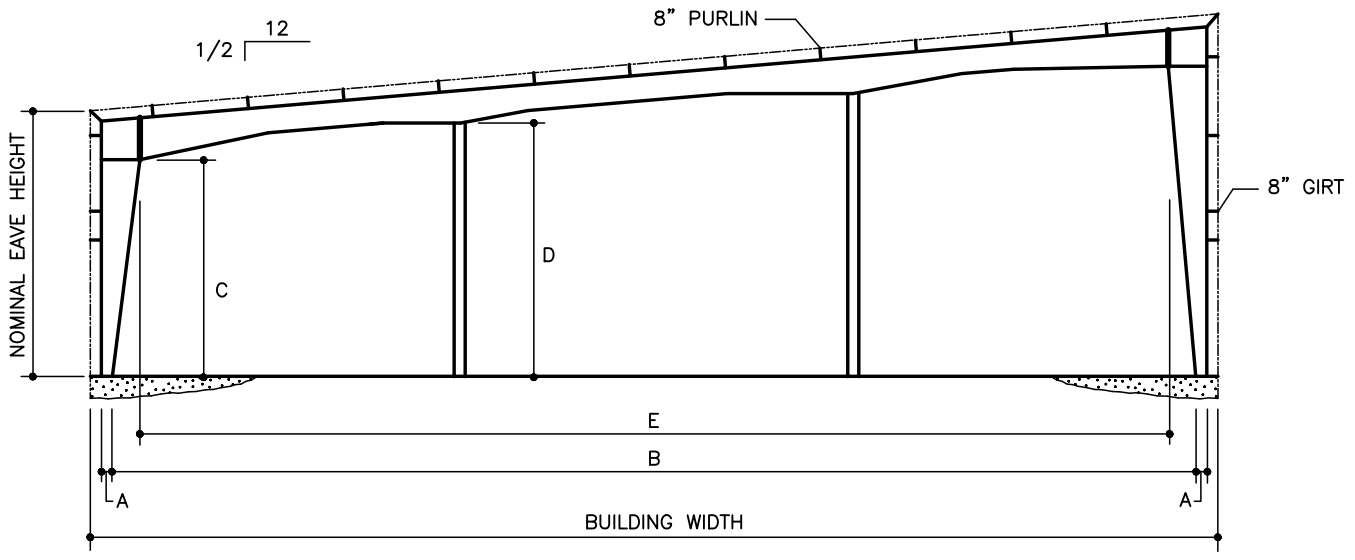
BLDG. WIDTH	NOM. EAVE HT.	10 PSF LIVE LOAD 20' BAY TRIB. LOAD = 200 PLF					30 PSF LIVE LOAD 30' BAY TRIB. LOAD = 900 PLF					50 PSF LIVE LOAD 32' BAY TRIB. LOAD = 1600 PLF				
		A	B	C	D	E	A	B	C	D	E	A	B	C	D	E
130' 2@65'	10'	12"	126'-8"	7'-8"	10'-4"	125'-0"	12"	126'-8"	7'-8"	9'-8"	125'-0"	12"	126'-8"	7'-8"	8'-8"	125'-0"
	12'	12"	126'-8"	9'-6"	12'-4"	124'-7"	12"	126'-8"	9'-6"	11'-8"	124'-7"	12"	126'-8"	9'-7"	10'-9"	124'-7"
	16'	12"	126'-8"	13'-2"	16'-4"	124'-0"	12"	126'-8"	13'-3"	15'-7"	124'-1"	12"	126'-8"	13'-4"	14'-9"	124'-1"
	20'	12"	126'-8"	17'-0"	20'-4"	123'-4"	12"	126'-8"	17'-0"	19'-6"	123'-6"	12"	126'-8"	17'-1"	18'-10"	123'-6"
	24'	12"	126'-8"	20'-7"	24'-4"	122'-9"	12"	126'-8"	20'-10"	23'-5"	123'-0"	12"	126'-8"	21'-0"	22'-11"	123'-0"
	28'	12"	126'-8"	24'-3"	28'-4"	122'-1"	12"	126'-8"	24'-7"	27'-4"	122'-5"	12"	126'-8"	24'-9"	27'-0"	122'-5"
	30'	12"	126'-8"	26'-1"	30'-4"	121'-9"	12"	126'-8"	26'-5"	29'-4"	122'-2"	12"	126'-8"	26'-7"	29'-0"	122'-2"
150' 2@75'	10'	12"	146'-8"	8'-0"	10'-5"	145'-8"	12"	146'-8"	7'-5"	9'-11"	144'-8"	12"	146'-8"	7'-3"	9'-0"	143'-8"
	12'	12"	146'-8"	9'-9"	12'-4"	145'-3"	12"	146'-8"	9'-3"	11'-10"	144'-4"	12"	146'-8"	9'-2"	11'-0"	143'-5"
	16'	12"	146'-8"	13'-4"	16'-2"	144'-6"	12"	146'-8"	13'-0"	15'-8"	143'-9"	12"	146'-8"	13'-0"	15'-0"	143'-0"
	20'	12"	146'-8"	17'-0"	20'-0"	143'-9"	12"	146'-8"	16'-9"	19'-5"	143'-3"	12"	146'-8"	16'-8"	19'-0"	142'-8"
	24'	12"	146'-8"	20'-8"	23'-10"	143'-0"	12"	146'-8"	20'-6"	23'-3"	142'-8"	12"	146'-8"	20'-6"	23'-0"	142'-3"
	28'	12"	146'-8"	24'-4"	27'-8"	142'-2"	12"	146'-8"	24'-3"	27'-0"	142'-1"	12"	146'-8"	24'-3"	27'-0"	141'-9"
	30'	12"	146'-8"	26'-1"	29'-7"	141'-9"	12"	146'-8"	26'-1"	28'-11"	141'-9"	12"	146'-8"	26'-1"	28'-8"	141'-8"



PRODUCT AND ENGINEERING MANUAL

4.1 PRIMARY FRAMING

PF0150PE – RMS-2 FRAME CLEARANCES



BLDG. WIDTH	NOM. EAVE HT.	10 PSF LIVE LOAD 20' BAY TRIB. LOAD = 200 PLF					30 PSF LIVE LOAD 30' BAY TRIB. LOAD = 900 PLF					50 PSF LIVE LOAD 32' BAY TRIB. LOAD = 1600 PLF				
		A	B	C	D	E	A	B	C	D	E	A	B	C	D	E
120' 3@40'	10'	12"	116'-8"	8'-2"	10'-0"	116'-4"	12"	116'-8"	7'-9"	9'-1"	115'-4"	12"	116'-8"	7'-9"	8'-6"	115'-4"
	12'	12"	116'-8"	10'-1"	12'-0"	116'-0"	12"	116'-8"	9'-7"	11'-1"	115'-0"	12"	116'-8"	9'-7"	10'-6"	115'-0"
	16'	12"	116'-8"	13'-10"	15'-11"	115'-5"	12"	116'-8"	13'-4"	15'-1"	114'-6"	12"	116'-8"	13'-4"	14'-6"	114'-6"
	20'	12"	116'-8"	17'-7"	19'-11"	114'-9"	12"	116'-8"	17'-1"	19'-1"	114'-0"	12"	116'-8"	17'-1"	18'-7"	114'-0"
	24'	12"	116'-8"	21'-4"	23'-10"	114'-2"	12"	116'-8"	20'-10"	23'-1"	113'-5"	12"	116'-8"	20'-10"	22'-7"	113'-5"
	28'	12"	116'-8"	25'-1"	27'-10"	113'-7"	12"	116'-8"	24'-7"	27'-1"	113'-0"	12"	116'-8"	24'-7"	26'-7"	113'-0"
	30'	12"	116'-8"	26'-11"	29'-10"	113'-4"	12"	116'-8"	26'-5"	29'-1"	112'-8"	12"	116'-8"	26'-5"	28'-8"	112'-8"
140' 3@46'-8"	10'	12"	136'-8"	8'-0"	9'-11"	136'-0"	12"	136'-8"	7'-5"	8'-9"	134'-8"	12"	136'-8"	7'-5"	8'-3"	133'-9"
	12'	12"	136'-8"	9'-11"	11'-10"	135'-9"	12"	136'-8"	9'-4"	10'-9"	134'-6"	12"	136'-8"	9'-4"	10'-3"	133'-9"
	16'	12"	136'-8"	13'-8"	15'-8"	135'-3"	12"	136'-8"	13'-2"	14'-9"	134'-2"	12"	136'-8"	13'-2"	14'-3"	133'-7"
	20'	12"	136'-8"	17'-5"	19'-6"	134'-9"	12"	136'-8"	17'-0"	18'-9"	134'-0"	12"	136'-8"	17'-0"	18'-4"	133'-5"
	24'	12"	136'-8"	21'-2"	23'-5"	134'-3"	12"	136'-8"	20'-10"	22'-9"	133'-7"	12"	136'-8"	20'-10"	22'-4"	133'-3"
	28'	12"	136'-8"	24'-11"	27'-3"	133'-9"	12"	136'-8"	24'-8"	26'-9"	133'-3"	12"	136'-8"	24'-8"	26'-5"	133'-0"
	30'	12"	136'-8"	26'-9"	29'-2"	133'-6"	12"	136'-8"	26'-7"	28'-9"	133'-2"	12"	136'-8"	26'-7"	28'-5"	133'-0"

LAST REVISION
 DATE: 06/21/04
 BY: KMC CHK: AAJ

DETAIL NAME IF APPLICABLE
PF0150PE.DWG

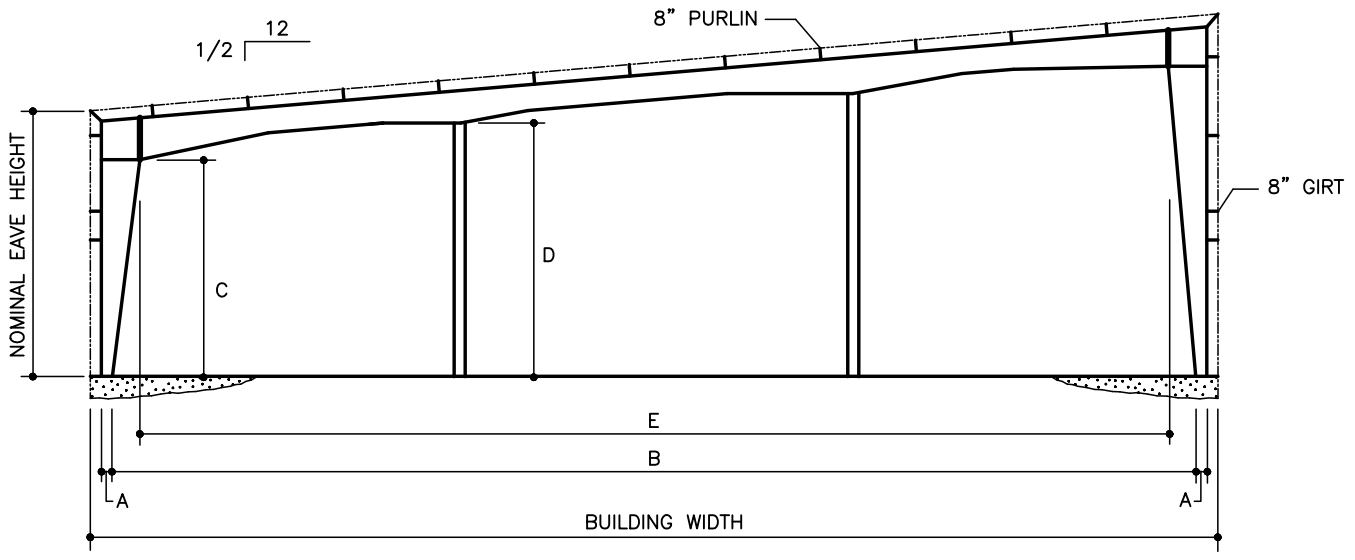
4.1.24



PRODUCT AND ENGINEERING MANUAL

4.1 PRIMARY FRAMING

PF0150PE – RMS-2 FRAME CLEARANCES CONTINUED



BLDG. WIDTH	NOM. EAVE HT.	10 PSF LIVE LOAD 20' BAY TRIB. LOAD = 200 PLF					30 PSF LIVE LOAD 30' BAY TRIB. LOAD = 900 PLF					50 PSF LIVE LOAD 32' BAY TRIB. LOAD = 1600 PLF				
		A	B	C	D	E	A	B	C	D	E	A	B	C	D	E
160' 3@ 53'-4"	10'	12"	156'-8"	7'-9"	9'-8"	155'-4"	12"	156'-8"	7'-3"	9'-0"	154'-4"	12"	156'-8"	7'-3"	8'-0"	154'-4"
	12'	12"	156'-8"	9'-8"	11'-8"	155'-1"	12"	156'-8"	9'-2"	11'-0"	154'-2"	12"	156'-8"	9'-2"	10'-0"	154'-2"
	16'	12"	156'-8"	13'-5"	15'-6"	154'-7"	12"	156'-8"	13'-1"	14'-11"	154'-0"	12"	156'-8"	13'-1"	14'-1"	154'-0"
	20'	12"	156'-8"	17'-2"	19'-4"	154'-2"	12"	156'-8"	16'-11"	18'-10"	153'-8"	16"	156'-0"	16'-11"	18'-1"	153'-8"
	24'	12"	156'-8"	21'-0"	23'-3"	153'-8"	12"	156'-8"	20'-10"	22'-10"	153'-4"	16"	156'-0"	20'-10"	22'-2"	153'-4"
	28'	12"	156'-8"	24'-9"	27'-1"	153'-2"	12"	156'-8"	24'-8"	26'-9"	153'-1"	16"	156'-0"	24'-8"	26'-2"	153'-0"
	30'	12"	156'-8"	26'-7"	29'-0"	153'-0"	12"	156'-8"	26'-7"	28'-8"	153'-0"	16"	156'-0"	26'-7"	28'-2"	153'-0"
180' 3@60'	10'	12"	176'-8"	7'-7"	10'-0"	175'-0"	12"	176'-8"	7'-5"	9'-0"	174'-8"	12"	176'-8"	6'-9"	7'-6"	173'-4"
	12'	12"	176'-8"	9'-6"	12'-0"	174'-9"	12"	176'-8"	9'-4"	10'-11"	174'-5"	12"	176'-8"	8'-9"	9'-6"	173'-3"
	16'	12"	176'-8"	13'-3"	15'-11"	174'-4"	12"	176'-8"	13'-2"	14'-10"	174'-1"	16"	176'-0"	12'-8"	13'-6"	173'-1"
	20'	12"	176'-8"	17'-1"	19'-11"	174'-0"	12"	176'-8"	17'-0"	18'-9"	173'-8"	16"	176'-0"	16'-7"	17'-7"	173'-0"
	24'	12"	176'-8"	21'-0"	23'-10"	173'-7"	12"	176'-8"	20'-10"	22'-8"	173'-4"	16"	176'-0"	20'-7"	21'-7"	172'-9"
	28'	12"	176'-8"	24'-9"	27'-10"	173'-2"	12"	176'-8"	24'-8"	26'-6"	173'-0"	20"	175'-4"	24'-6"	25'-7"	172'-9"
	30'	12"	176'-8"	26'-7"	29'-10"	173'-0"	12"	176'-8"	26'-6"	28'-6"	172'-9"	20"	175'-4"	26'-5"	27'-8"	172'-8"

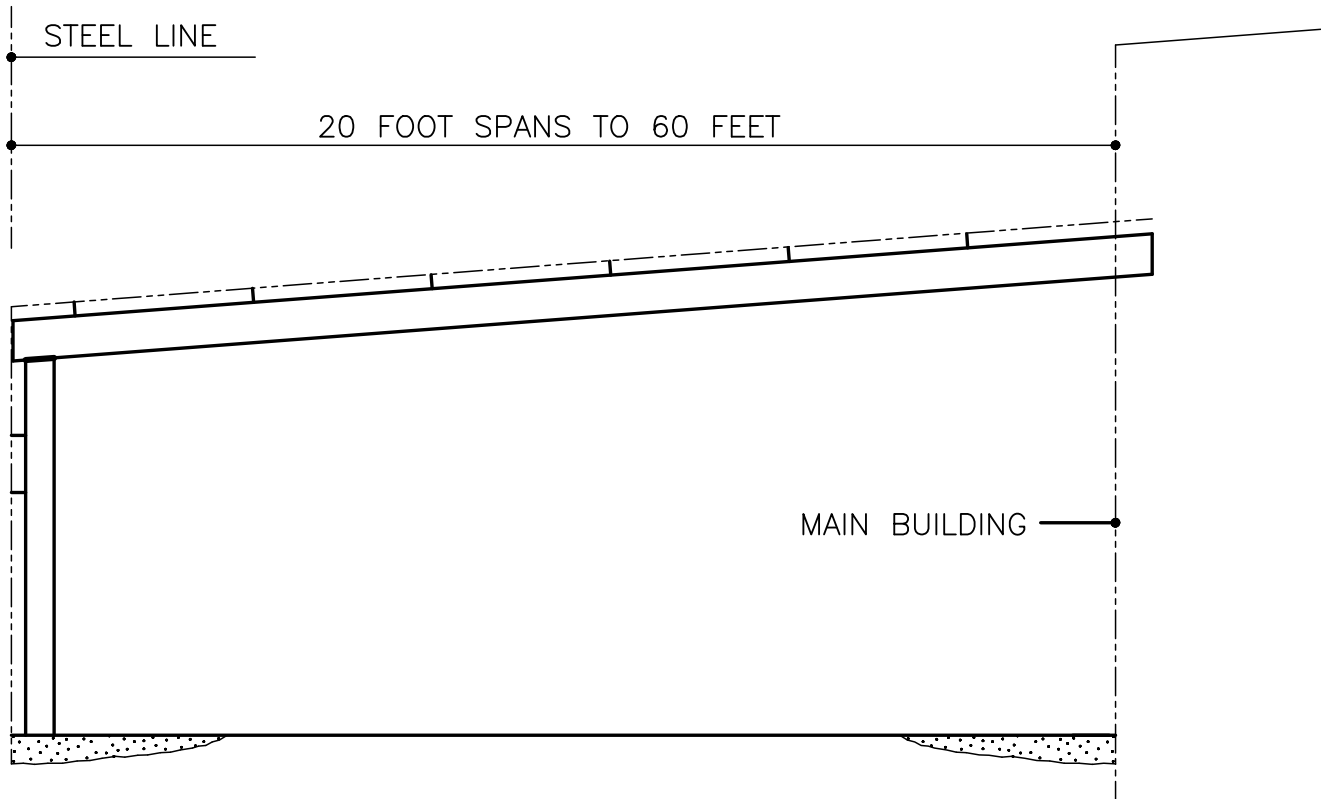
LAST REVISION
 DATE: 06/21/04
 BY: KMC CHK: AAJ

DETAIL NAME IF APPLICABLE
PF0150PE.DWG

4.1.25

LCS – LEAN-TO

PF0160PE – LCS FRAMING FEATURES



LCS FRAMING FEATURES

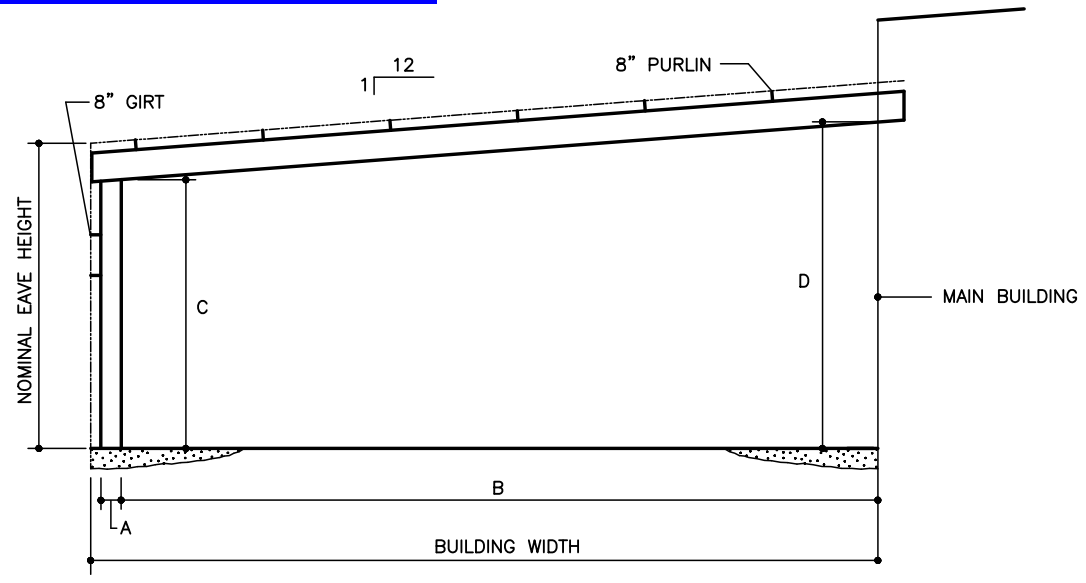
1. Lean-to (LCS) frames are ideal for use as office structures attached to larger RF or RFC buildings.
2. LCS frames are well suited for use with architectural accessories such as overhangs and fascias.
3. LCS framing is an economical solution for the expansion of existing buildings. (Note: A minimum 1'-3" roof step is recommended at this condition.)
4. Straight columns provide maximum floor space and allow interior finish to be easily installed.
5. LCS frame design minimizes horizontal thrusts so smaller and less expensive foundations may be used.
6. All numbers are preliminary and subject to change. Please contact Nucor for specific building clearances.
7. If used to expand from existing building, verification that existing building will handle new loading must be made by Project Engineer of Record.

LAST REVISION
 DATE: 02/09/01
 BY: CDM CHK: RJF

DETAIL NAME IF APPLICABLE
PF0160PE.DWG

4.1.26

PF0170PE – LCS FRAME CLEARANCES



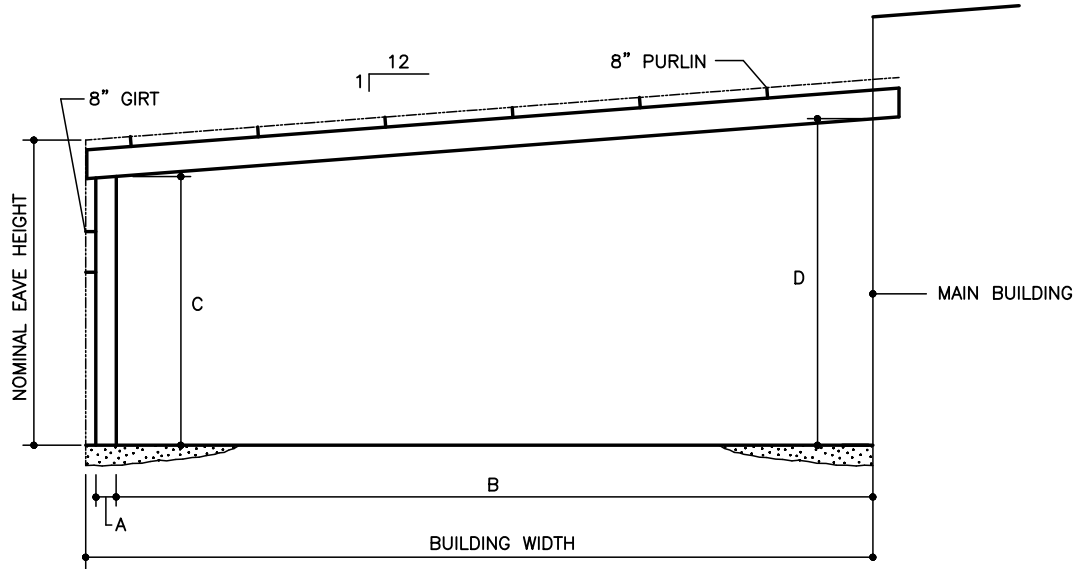
BLDG. WIDTH	NOM. EAVE HT.	10 PSF LIVE LOAD 20' BAY TRIB. LOAD = 200 PLF				30 PSF LIVE LOAD 30' BAY TRIB. LOAD = 900 PLF				50 PSF LIVE LOAD 32' BAY TRIB. LOAD = 1600 PLF			
		A	B	C	D	A	B	C	D	A	B	C	D
20'	10'	12" 18'-4"	8'-4"	8'-9"	12" 18'-4"	8'-4"	8'-9"	12" 18'-4"	8'-4"	8'-9"			
	12'	12" 18'-4"	10'-4"	10'-9"	12" 18'-4"	10'-4"	10'-9"	12" 18'-4"	10'-4"	10'-9"			
	16'	12" 18'-4"	14'-4"	14'-9"	12" 18'-4"	14'-4"	14'-9"	12" 18'-4"	14'-4"	14'-9"			
	20'	12" 18'-4"	18'-3"	18'-9"	12" 18'-4"	18'-3"	18'-7"	12" 18'-4"	18'-3"	18'-7"			
	24'	12" 18'-4"	22'-3"	22'-7"	12" 18'-4"	22'-3"	22'-7"	12" 18'-4"	22'-3"	22'-7"			
	28'	12" 18'-4"	26'-2"	26'-7"	12" 18'-4"	26'-2"	26'-7"	12" 18'-4"	26'-2"	26'-7"			
	30'	12" 18'-4"	28'-2"	28'-7"	12" 18'-4"	28'-2"	28'-7"	12" 18'-4"	28'-2"	28'-7"			
30'	10'	12" 28'-4"	8'-4"	8'-11"	12" 28'-4"	8'-4"	8'-11"	12" 28'-4"	7'-11"	8'-5"			
	12'	12" 28'-4"	10'-4"	10'-11"	12" 28'-4"	10'-4"	10'-11"	12" 28'-4"	9'-11"	10'-5"			
	16'	12" 28'-4"	14'-4"	14'-11"	12" 28'-4"	14'-4"	14'-11"	12" 28'-4"	13'-11"	14'-5"			
	20'	12" 28'-4"	18'-4"	18'-11"	12" 28'-4"	18'-4"	18'-11"	12" 28'-4"	17'-11"	18'-5"			
	24'	12" 28'-4"	22'-4"	22'-11"	12" 28'-4"	22'-4"	22'-11"	12" 28'-4"	21'-11"	22'-5"			
	28'	12" 28'-4"	26'-4"	26'-11"	12" 28'-4"	26'-4"	26'-11"	12" 28'-4"	25'-11"	26'-5"			
	30'	12" 28'-4"	28'-4"	28'-11"	12" 28'-4"	28'-4"	28'-11"	12" 28'-4"	27'-11"	28'-5"			
40'	10'	12" 38'-4"	8'-2"	9'-0"	12" 38'-4"	7'-11"	8'-8"	12" 38'-4"	7'-0"	7'-10"			
	12'	12" 38'-4"	10'-2"	11'-0"	12" 38'-4"	9'-11"	10'-8"	12" 38'-4"	9'-0"	9'-10"			
	16'	12" 38'-4"	14'-2"	15'-0"	12" 38'-4"	13'-11"	14'-8"	12" 38'-4"	13'-0"	13'-10"			
	20'	12" 38'-4"	18'-2"	19'-0"	12" 38'-4"	17'-11"	18'-8"	12" 38'-4"	17'-0"	17'-10"			
	24'	12" 38'-4"	22'-2"	23'-0"	12" 38'-4"	21'-11"	22'-8"	12" 38'-4"	21'-0"	21'-10"			
	28'	12" 38'-4"	26'-2"	27'-0"	12" 38'-4"	25'-11"	26'-8"	12" 38'-4"	25'-0"	25'-10"			
	30'	12" 38'-4"	28'-2"	29'-0"	12" 38'-4"	27'-11"	28'-8"	12" 38'-4"	27'-0"	27'-10"			

LAST REVISION
 DATE: 06/21/04
 BY: KMC_CHK: AAJ

DETAIL NAME IF APPLICABLE
PF0170PE.DWG

4.1.27

PF0170PE – LCS FRAME CLEARANCES CONTINUED



BLDG. WIDTH	NOM. EAVE HT.	10 PSF LIVE LOAD 20' BAY TRIB. LOAD = 200 PLF				30 PSF LIVE LOAD 30' BAY TRIB. LOAD = 900 PLF				50 PSF LIVE LOAD 32' BAY TRIB. LOAD = 1600 PLF			
		A	B	C	D	A	B	C	D	A	B	C	D
50'	10'	12"	48'-4"	8'-0"	9'-0"	12"	48'-4"	7'-2"	8'-2"	12"	48'-4"	6'-2"	7'-2"
	12'	12"	48'-4"	10'-0"	11'-0"	12"	48'-4"	9'-2"	10'-2"	12"	48'-4"	8'-2"	9'-2"
	16'	12"	48'-4"	14'-0"	15'-0"	12"	48'-4"	13'-2"	14'-2"	12"	48'-4"	12'-2"	13'-2"
	20'	12"	48'-4"	18'-0"	19'-0"	12"	48'-4"	17'-2"	18'-2"	12"	48'-4"	16'-2"	17'-2"
	24'	12"	48'-4"	22'-0"	23'-0"	12"	48'-4"	21'-2"	22'-2"	12"	48'-4"	20'-2"	21'-2"
	28'	12"	48'-4"	26'-0"	27'-0"	12"	48'-4"	25'-2"	26'-2"	16"	48'-0"	24'-3"	25'-2"
	30'	12"	48'-4"	28'-0"	29'-0"	12"	48'-4"	27'-2"	28'-2"	16"	48'-0"	26'-3"	27'-2"
60'	10'	12"	58'-4"	7'-8"	9'-0"	12"	58'-4"	7'-0"	8'-0"	16"	58'-0"	5'-5"	6'-7"
	12'	12"	58'-4"	9'-8"	11'-0"	12"	58'-4"	9'-0"	10'-0"	16"	58'-0"	7'-5"	8'-7"
	16'	12"	58'-4"	13'-8"	15'-0"	12"	58'-4"	13'-0"	14'-0"	16"	58'-0"	11'-4"	12'-5"
	20'	12"	58'-4"	17'-8"	19'-0"	12"	58'-4"	17'-0"	18'-0"	20"	57'-8"	15'-4"	16'-5"
	24'	12"	58'-4"	21'-8"	23'-0"	12"	58'-4"	21'-0"	22'-0"	20"	57'-8"	19'-3"	20'-5"
	28'	12"	58'-4"	25'-8"	27'-0"	12"	58'-4"	25'-0"	26'-0"	20"	57'-8"	23'-3"	24'-5"
	30'	12"	58'-4"	27'-8"	29'-0"	12"	58'-4"	27'-0"	28'-0"	20"	57'-8"	25'-3"	26'-5"

LAST REVISION
 DATE: 06/21/04
 BY: KMC CHK: AAJ

DETAIL NAME IF APPLICABLE
PF0170PE.DWG

4.1.28