



TABLE OF CONTENTS

Table of Contents	1
General Notes	2
Roof Structural Details	3
AR0010 – Low Eave, Bypass Girts	3
AR0020 – Low Eave, Inset Girts	4
AR0030 – Low Eave, Flush Girts	5
AR0040 – High Eave, Bypass Girts	6
AR0060 – High Eave, Inset Girts	7
AR0070 – High Eave, Flush Girts	8
AR0080 – Ridge, Bypass Girts	9
AR0090 – Ridge, Inset Girts	10
AR0100 – Ridge, Flush Girts	11
AR0110 – Low Eave with Gable Below, Bypass Girts	12
AR0120 – Low Eave with Gable Below, Inset Girts	13
AR0130 – Low Eave with Gable Below, Flush Girts	14
AR0140 – High Eave with Gable Below, Bypass Girts	15
AR0150 – High Eave with Gable Below, Inset Girts	16
AR0160 – High Eave with Gable Below, Flush Girts	17
Classic Roof Trim Details	18
FE0010PE – High Eave Future Expansion—Ridge	18
FE0020PE – Low Eave Future Expansion Roof Step (Wall Panel Remains)	19
FE0030PE – Low Eave Future Expansion Roof Step (Wall Panel Removed)	20
FE0040PE – Low Eave Future Expansion (Below Eave)	21
FE0050PE – High Eave Future Expansion Roof Step (Wall Panel Remains)	22
FE0060PE – High Eave Future Expansion Roof Step (Wall Panel Removed) ...	23
FE0070PE – High Eave Future Expansion (Below Eave).....	24
CFR Roof Trim Details	25
FE0080PE – High Eave Future Expansion—Ridge	25
FE0090PE – Low Eave Future Expansion Roof Step (Wall Panel Remains)	26
FE0100PE – Low Eave Future Expansion Roof Step (Wall Panel Removed)	27
FE0110PE – Low Eave Future Expansion.....	28
FE0120PE – High Eave Future Expansion Roof Step (Wall Panel Remains)	29
FE0130PE – High Eave Future Expansion Roof Step (Wall Panel Removed) ...	30
FE0140PE – High Eave Future Expansion (Below Eave).....	31



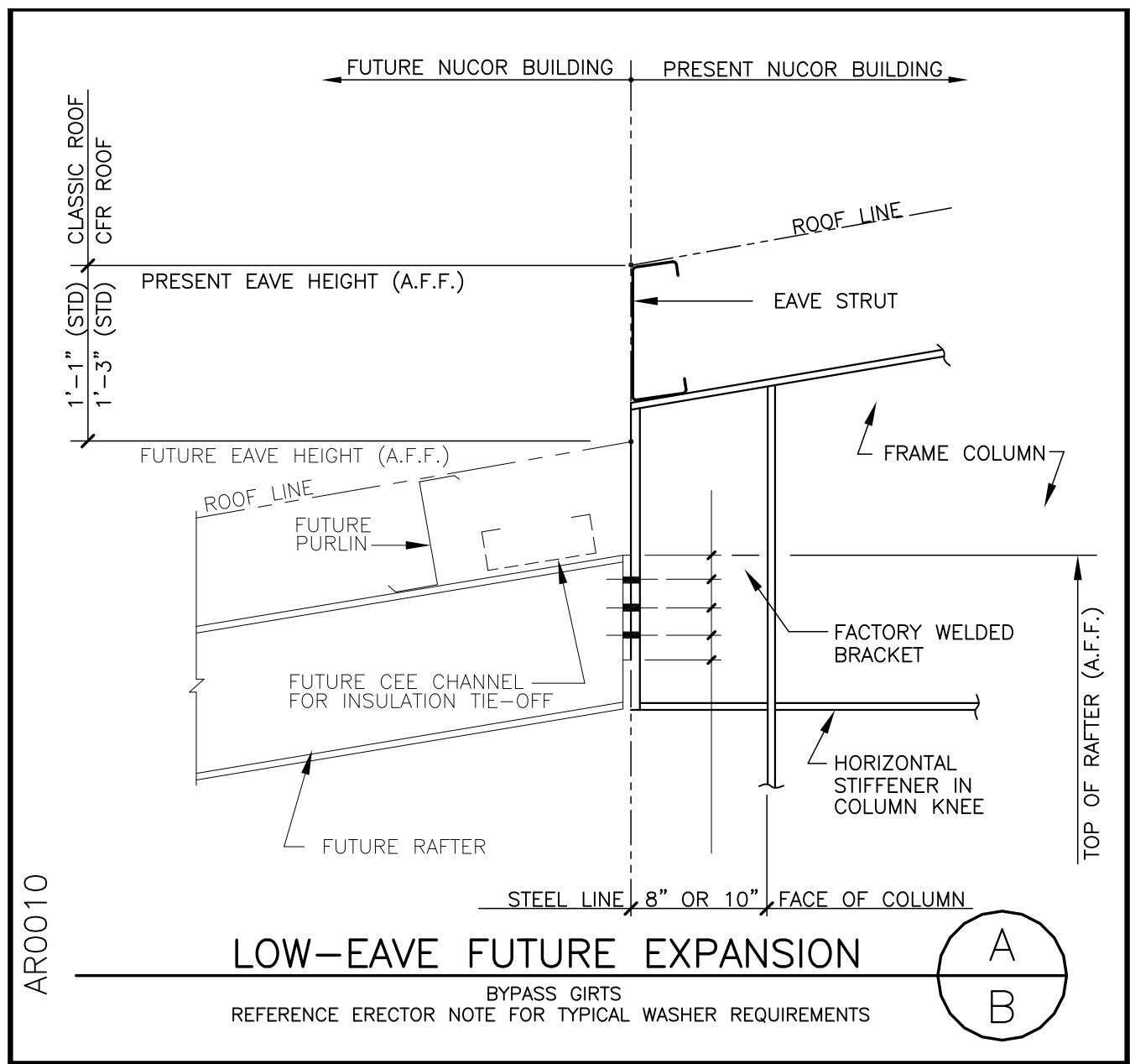
GENERAL NOTES

The future expansion details in this section are shown assuming the future expansion will be a Nucor Buildings Systems structure.

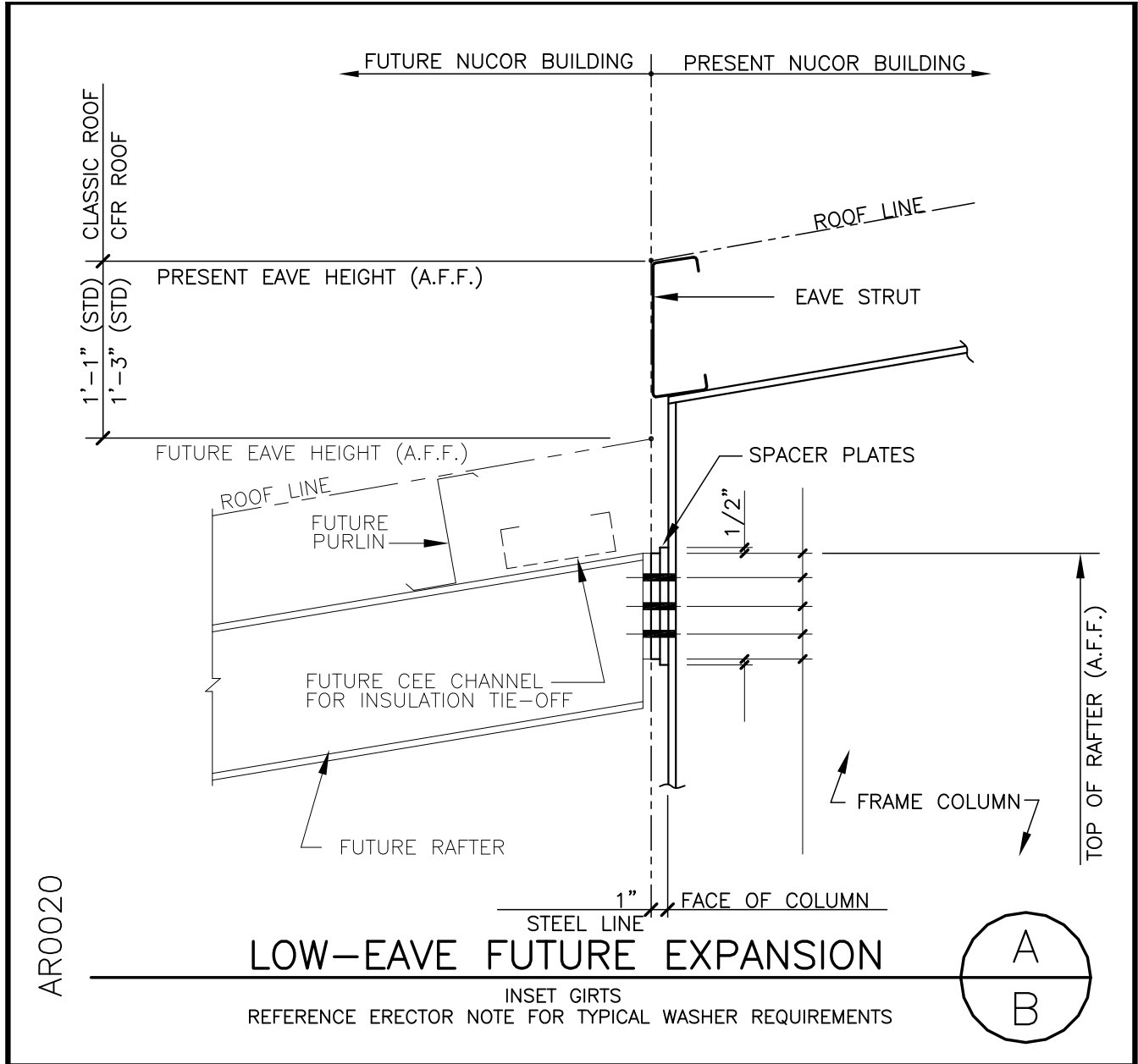
1. NBS will design the new structure for the future expansion based on the future expansion information given by the customer on the “Future Expansion Supplemental Form”. It is imperative that Nucor receives all applicable information regarding the future expansion so that Nucor understands and provides material for the correct conditions. Nucor Building Systems will not be responsible for the design of the new structure if the future expansion information changes after the new structure is already fabricated and/or erected.
2. The new building can be prepped for the primary structural connections of the future expansion, including but not limited to the high eave parapet support, mezzanine connections, and crane steel. The new building can be designed for future mezzanine and crane loads as specified in the order documents.
3. If the new building has a Post and Beam endwall condition, the future expansion from this endwall can only be accomplished by placing a new frame directly adjacent (within 2'-8") of the Post and Beam frame.

ROOF STRUCTURAL DETAILS

AR0010 – LOW EAVE, BYPASS GIRTS



AR0020 – LOW EAVE, INSET GIRTS

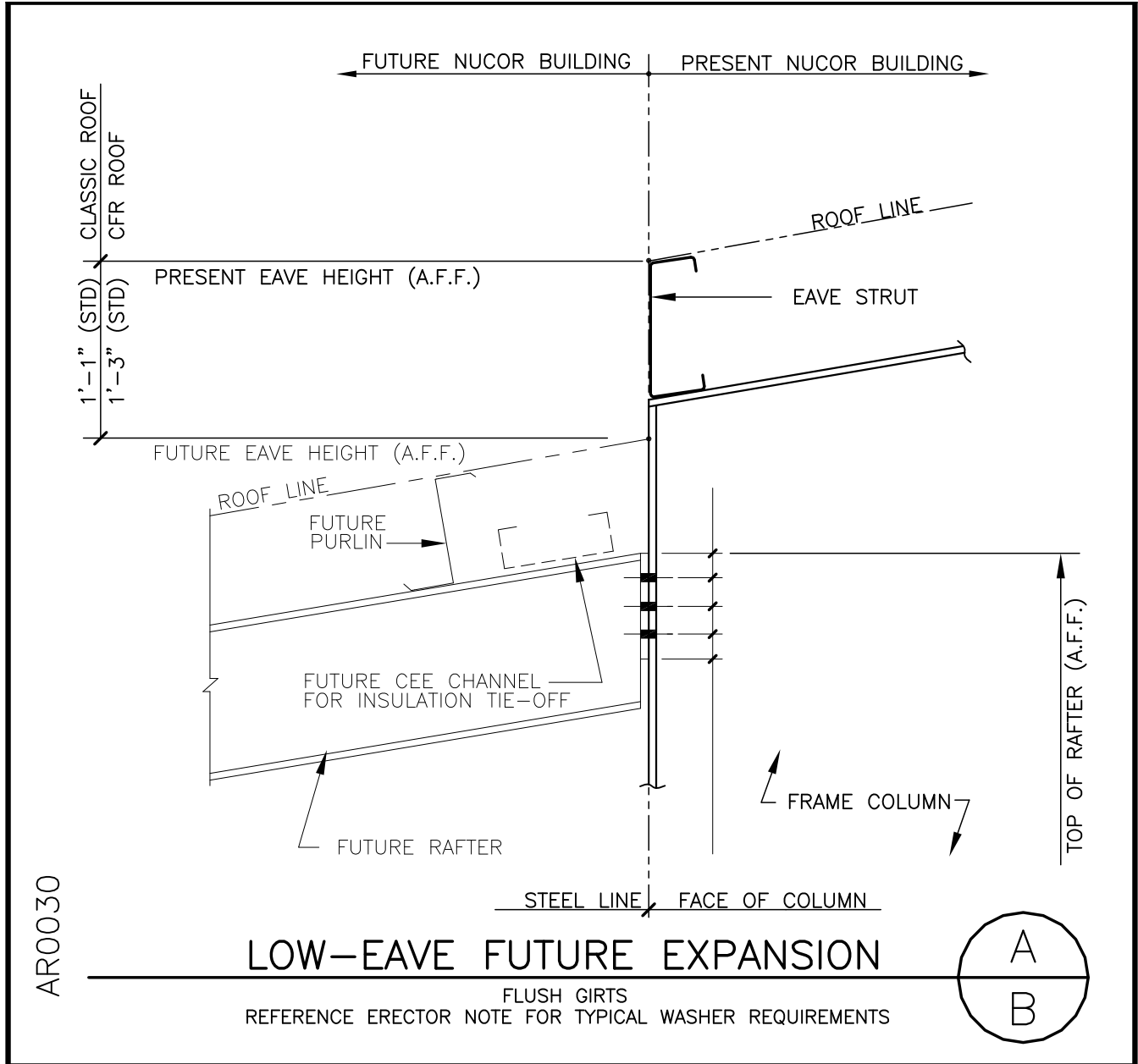


LAST REVISION DATE: 04/17/09 BY: AES CHK: KMC

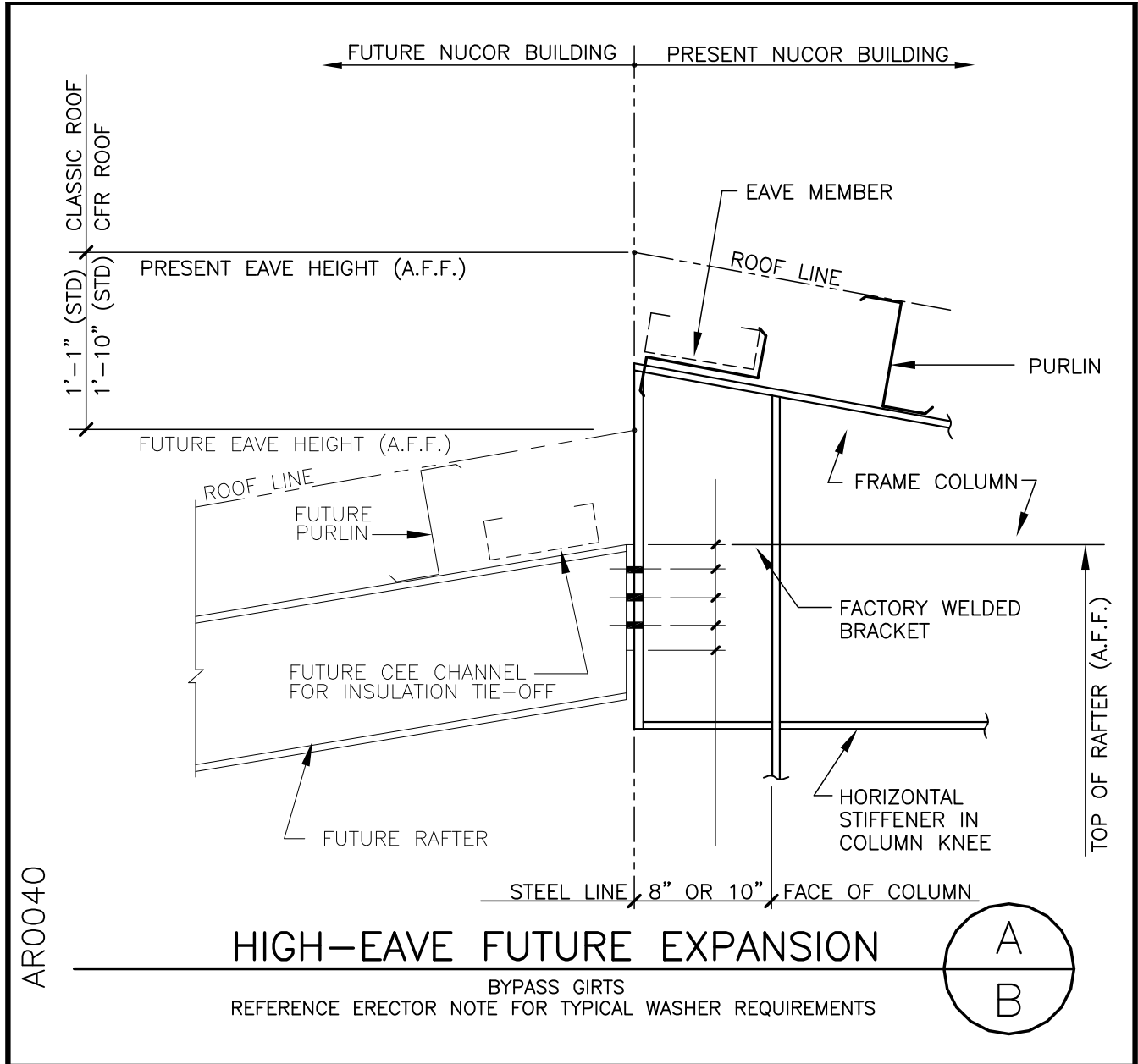
DETAIL NAME IF APPLICABLE AR0020.DWG
--

4.8.4

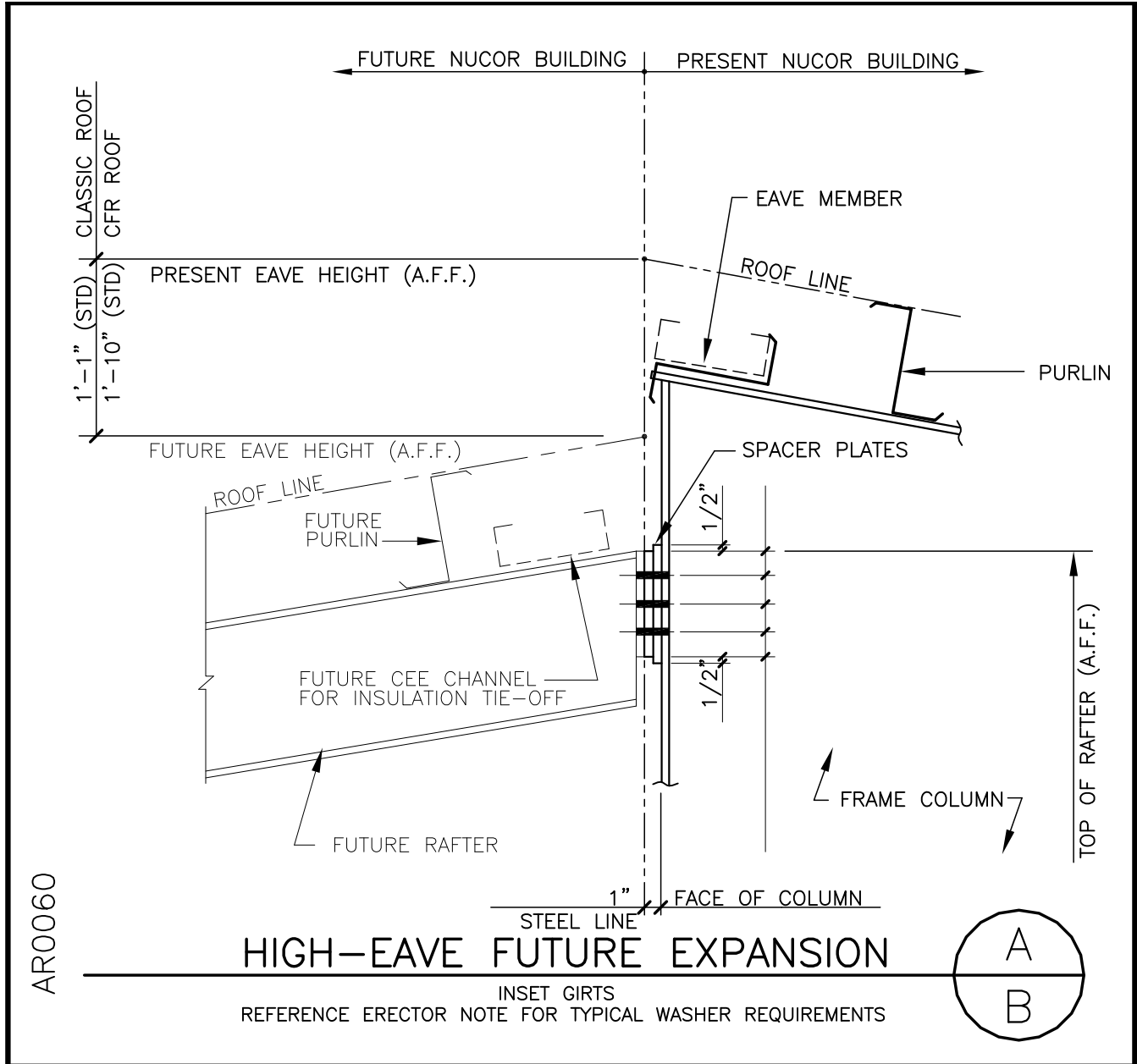
AR0030 – LOW EAVE, FLUSH GIRTS



AR0040 – HIGH EAVE, BYPASS GIRTS



AR0060 – HIGH EAVE, INSET GIRTS

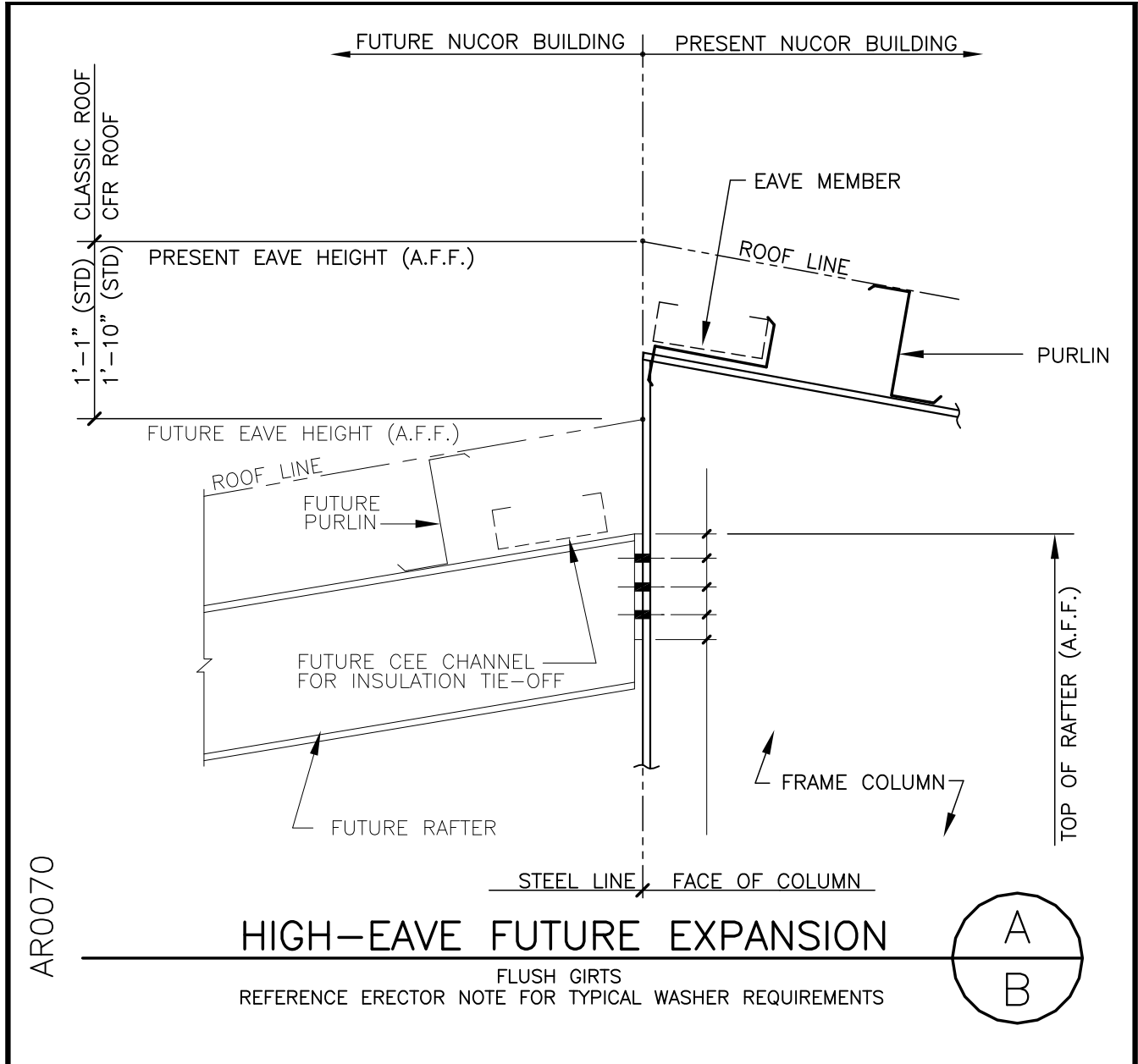


LAST REVISION DATE: 04/17/09 BY: AES CHK: KMC

<u>DETAIL NAME IF APPLICABLE</u> AR0060.DWG

4.8.7

AR0070 – HIGH EAVE, FLUSH GIRTS

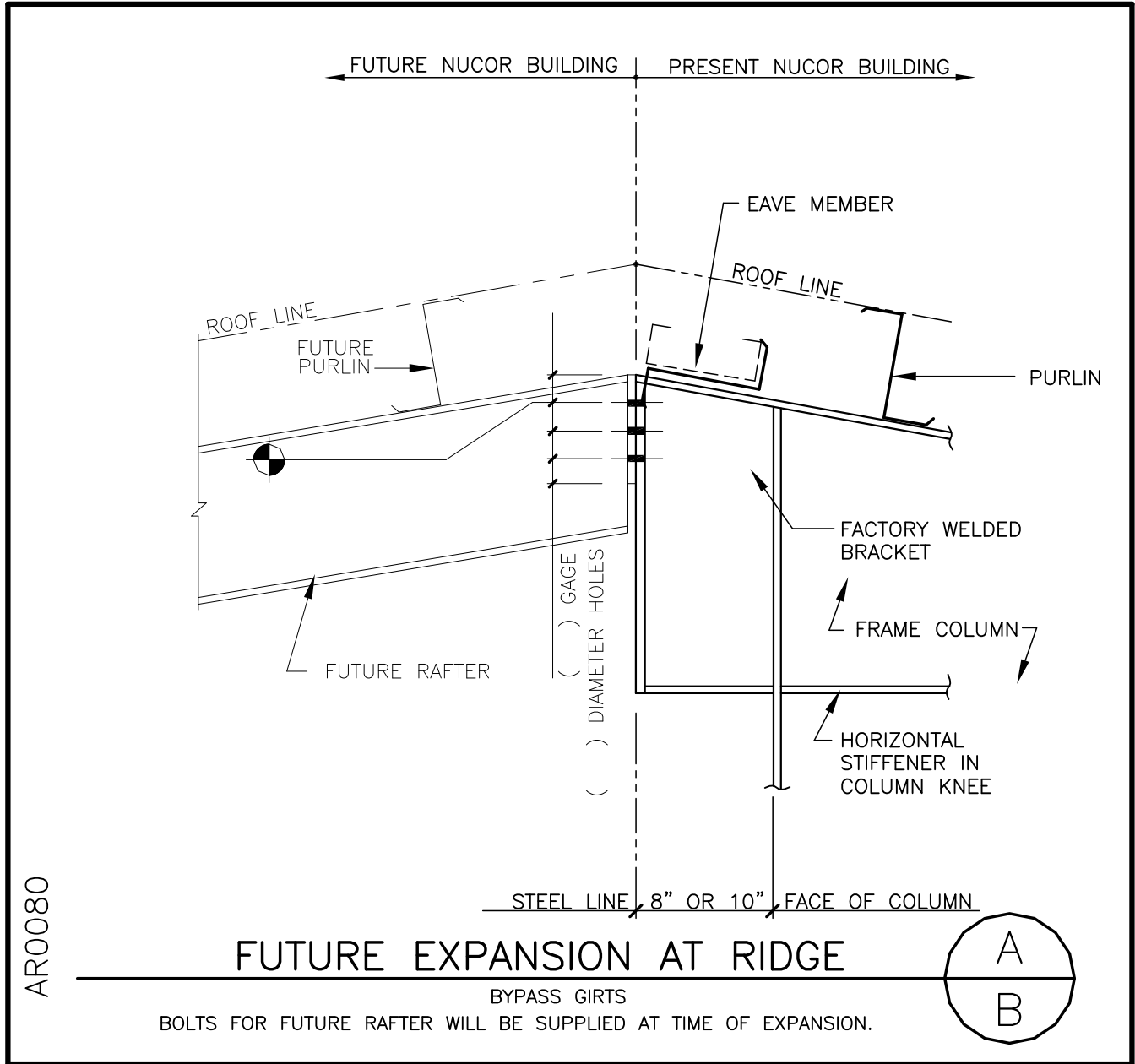


LAST REVISION DATE: 04/17/09 BY: AES CHK: KMC

<u>DETAIL NAME IF APPLICABLE</u> AR0070.DWG

4.8.8

AR0080 – RIDGE, BYPASS GIRTS

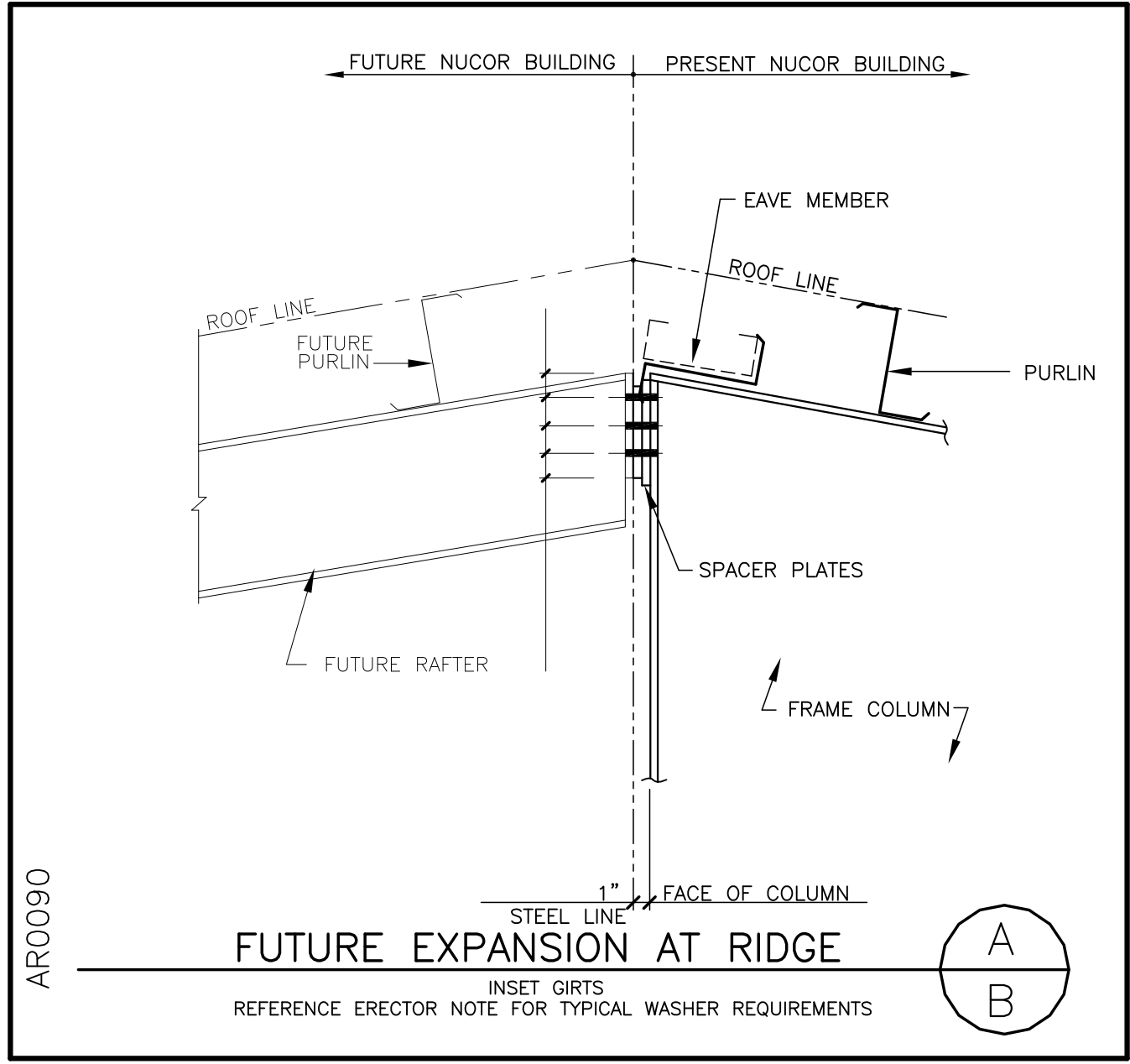


LAST REVISION DATE: 04/17/09 BY: AES CHK: KMC

<u>DETAIL NAME IF APPLICABLE</u> AR0080.DWG

4.8.9

AR0090 – RIDGE, INSET GIRTS



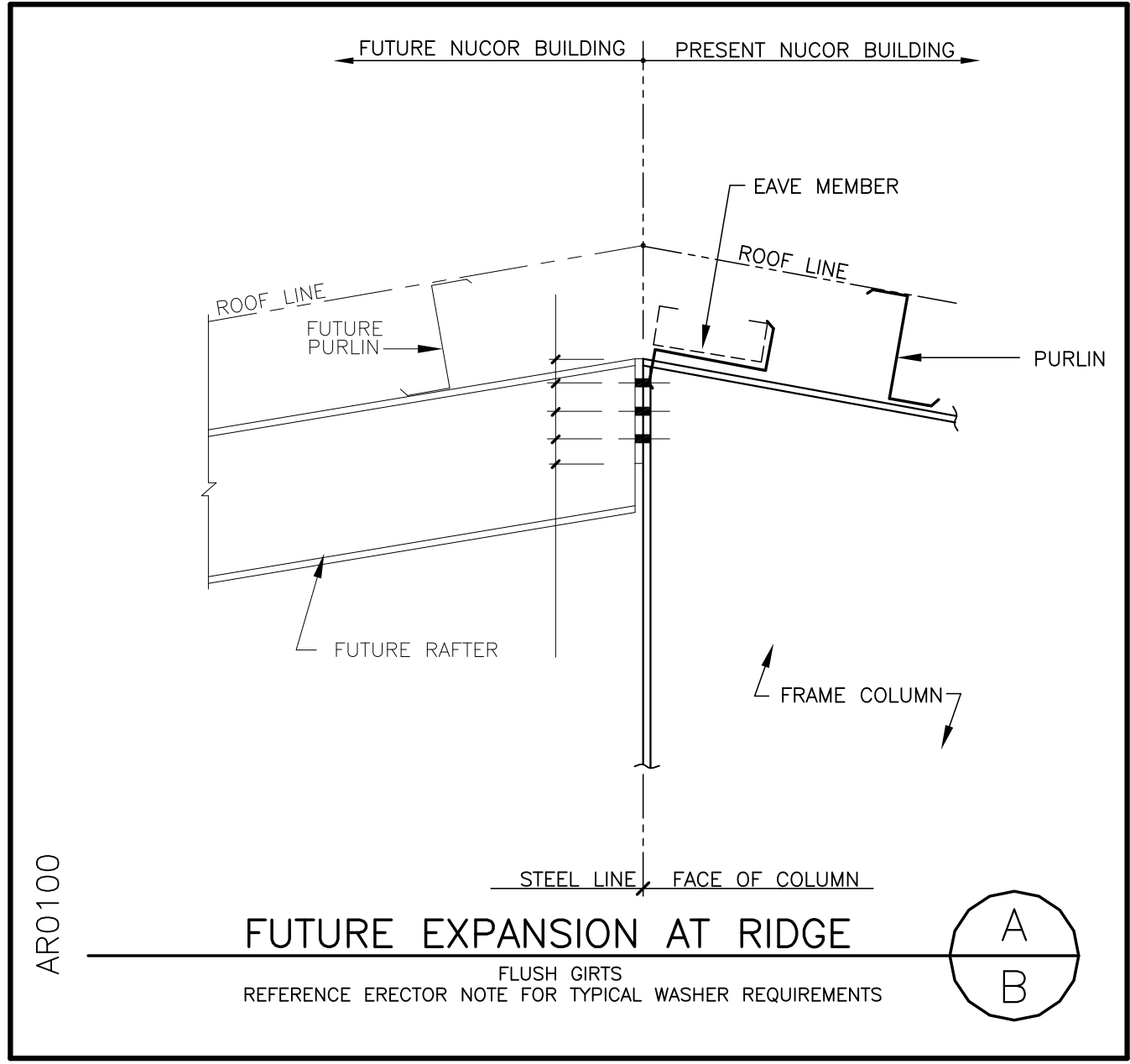
AR0090

LAST REVISION
 DATE: 04/17/09
 BY: AES_CHK: KMC

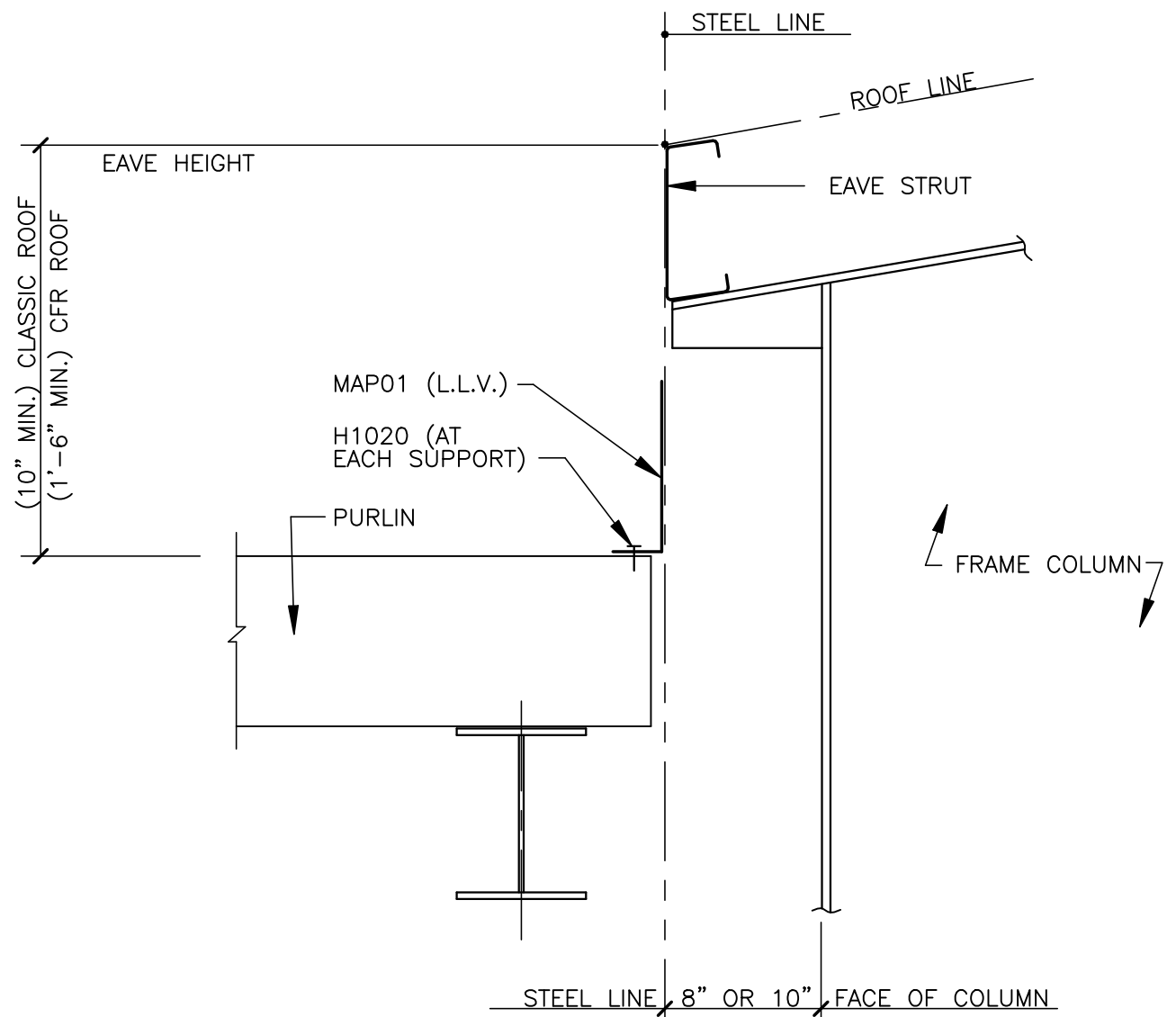
DETAIL NAME IF APPLICABLE
AR0090.DWG

4.8.10

AR0100 – RIDGE, FLUSH GIRTS



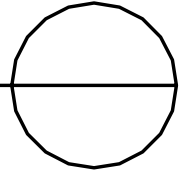
AR0110 – LOW EAVE WITH GABLE BELOW, BYPASS GIRTS



AR0110

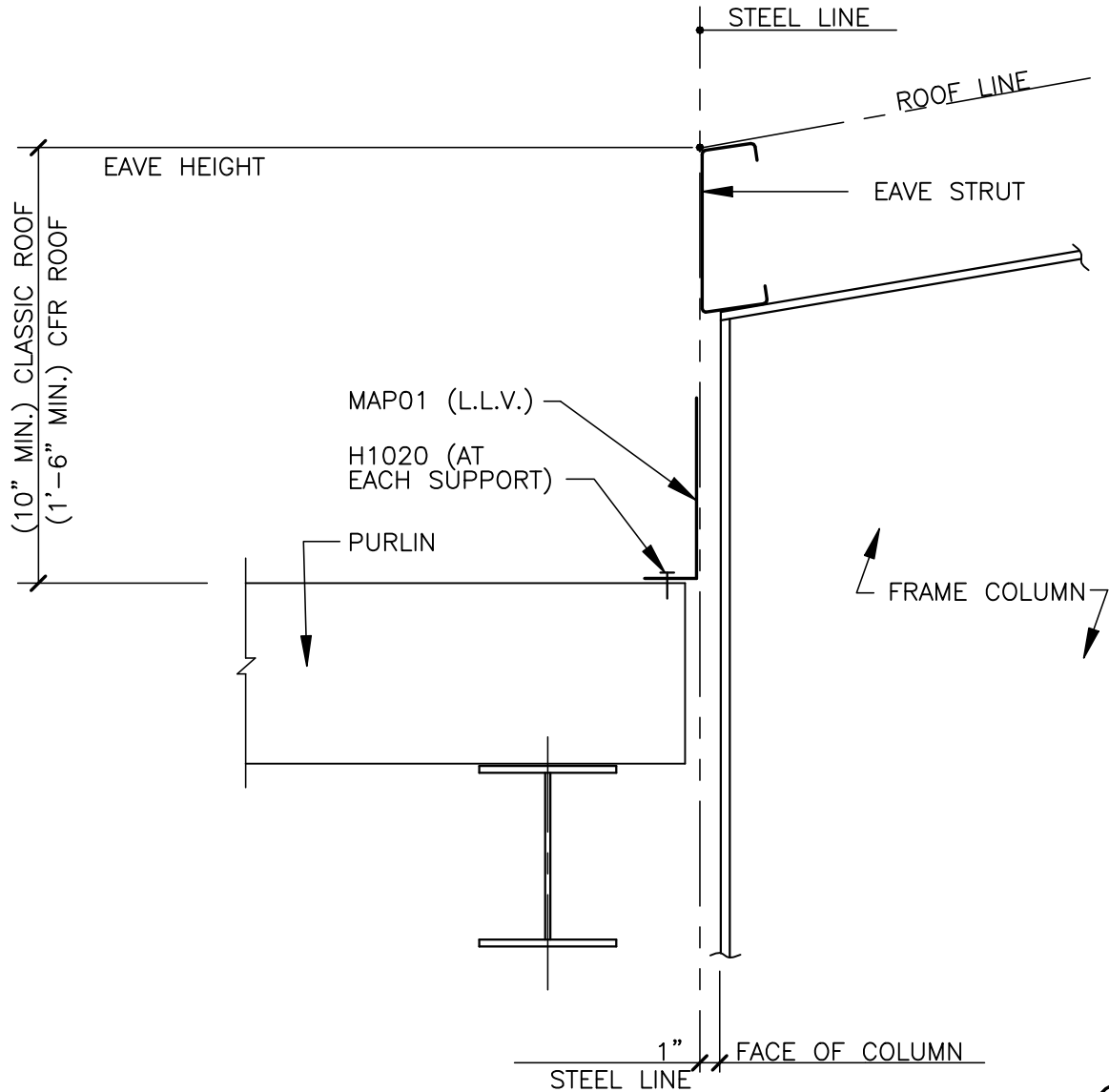
LOW-EAVE WITH GABLE BLDG. BELOW

BYPASS GIRTS
 REFERENCE ERECTOR NOTE FOR TYPICAL WASHER REQUIREMENTS



LAST REVISION DATE: <u>09/27/01</u> BY: <u>CDM</u> CHK: <u>RJF</u>	<u>DETAIL NAME IF APPLICABLE</u> AR0110.DWG	4.8.12
--	---	---------------

AR0120 – LOW EAVE WITH GABLE BELOW, INSET GIRTS

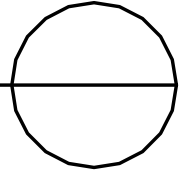


AR0120

LOW-EAVE WITH GABLE BLDG. BELOW

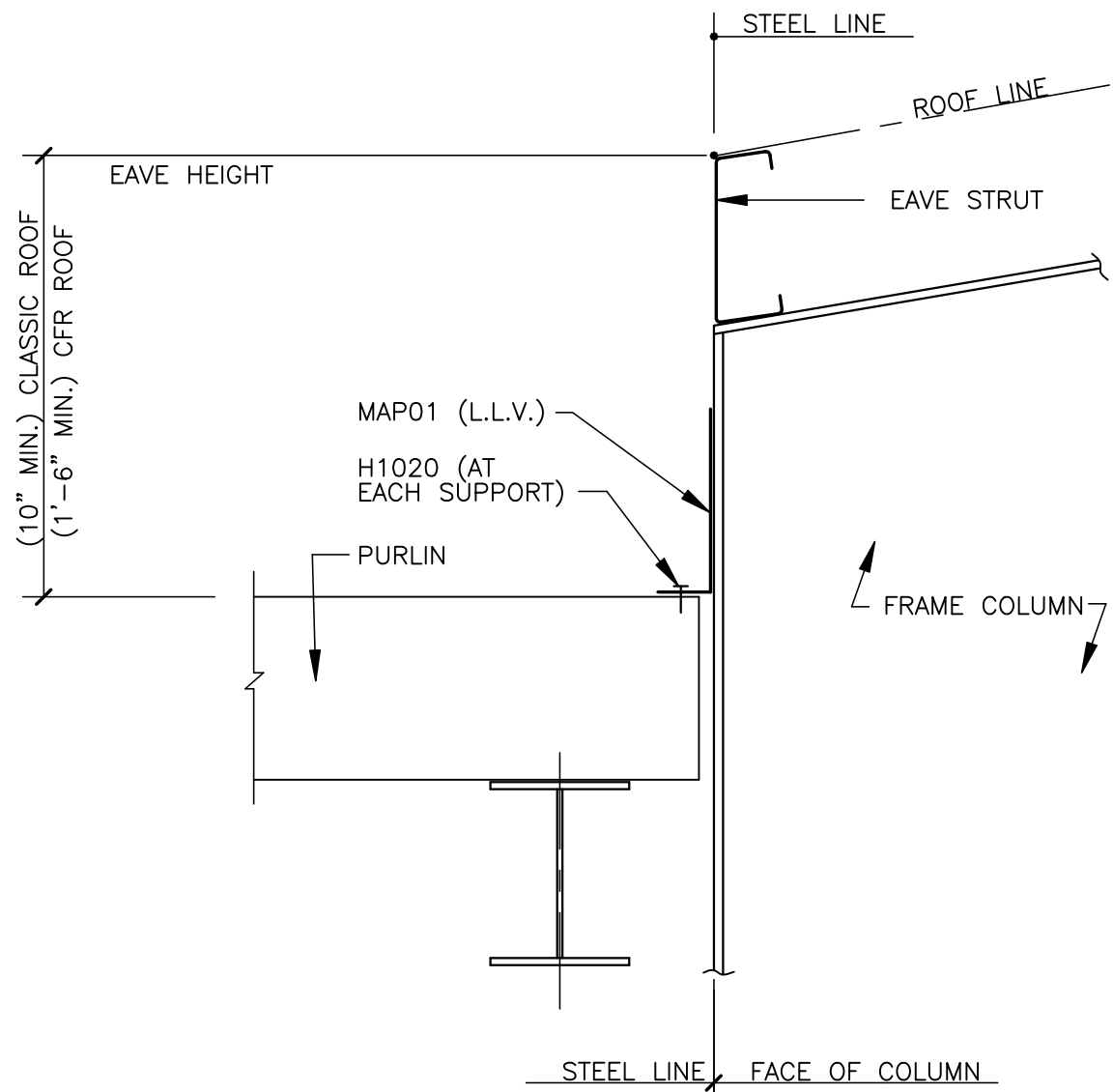
INSET GIRTS

REFERENCE ERECTOR NOTE FOR TYPICAL WASHER REQUIREMENTS



LAST REVISION DATE: <u>09/27/01</u> BY: <u>CDM</u> CHK: <u>RJF</u>	<u>DETAIL NAME IF APPLICABLE</u> AR0120.DWG	4.8.13
--	---	---------------

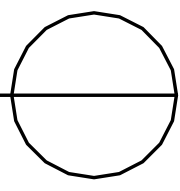
AR0130 – LOW EAVE WITH GABLE BELOW, FLUSH GIRTS



AR0130

LOW-EAVE WITH GABLE BLDG. BELOW

FLUSH GIRTS
REFERENCE ERECTOR NOTE FOR TYPICAL WASHER REQUIREMENTS

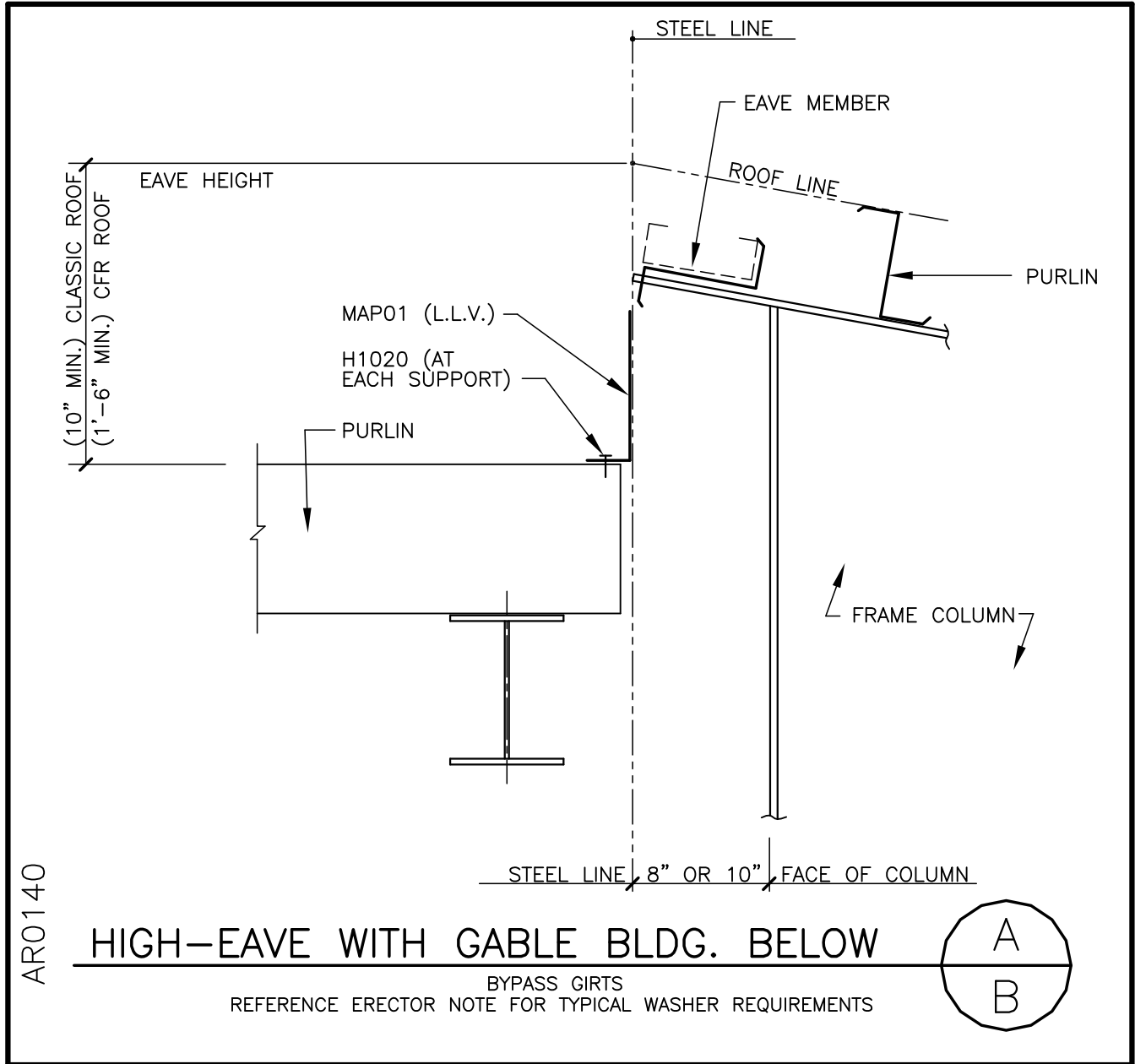


LAST REVISION DATE: <u>09/27/01</u> BY: <u>CDM</u> CHK: <u>RJF</u>
--

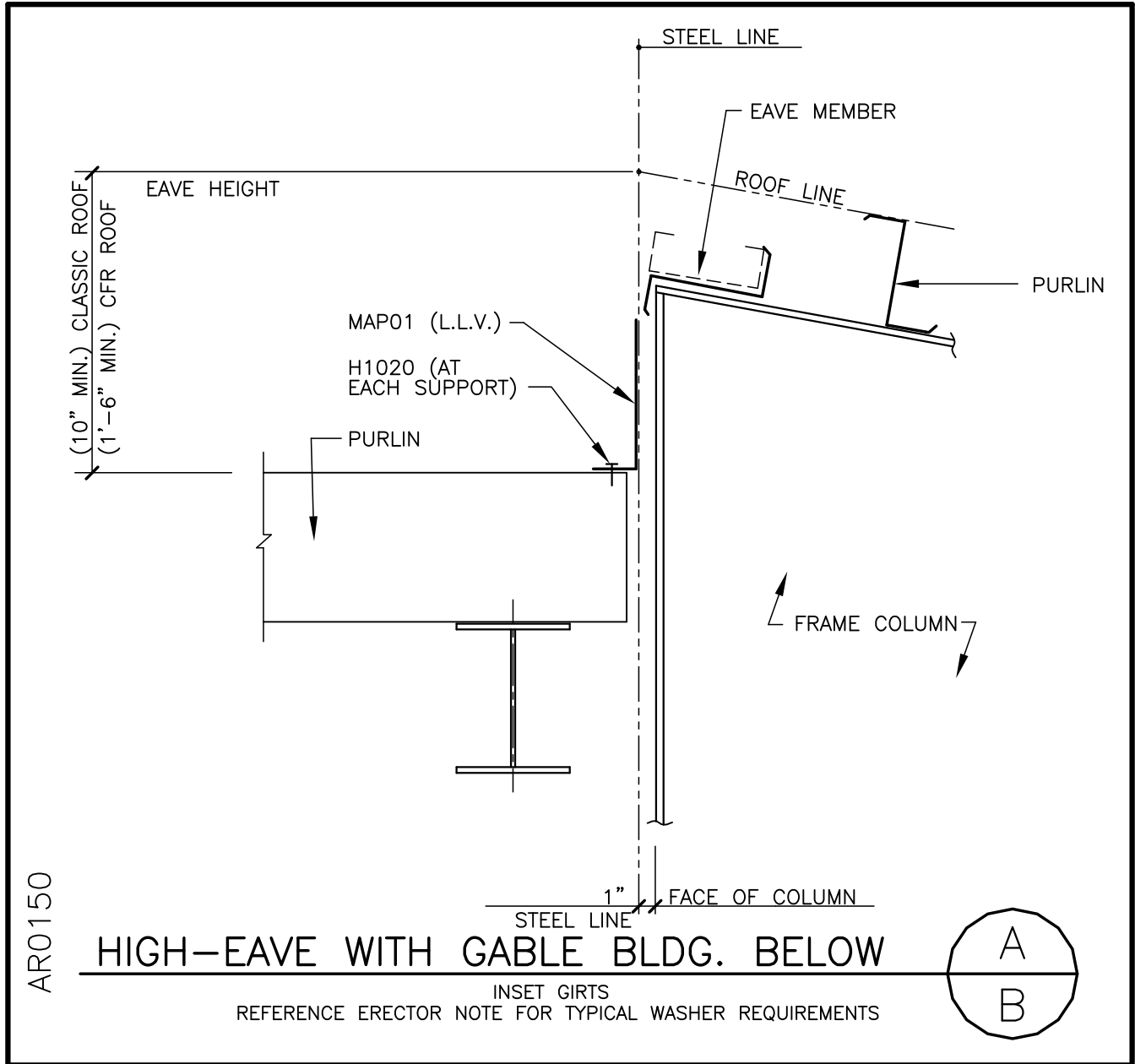
<u>DETAIL NAME IF APPLICABLE</u> AR0130.DWG

4.8.14

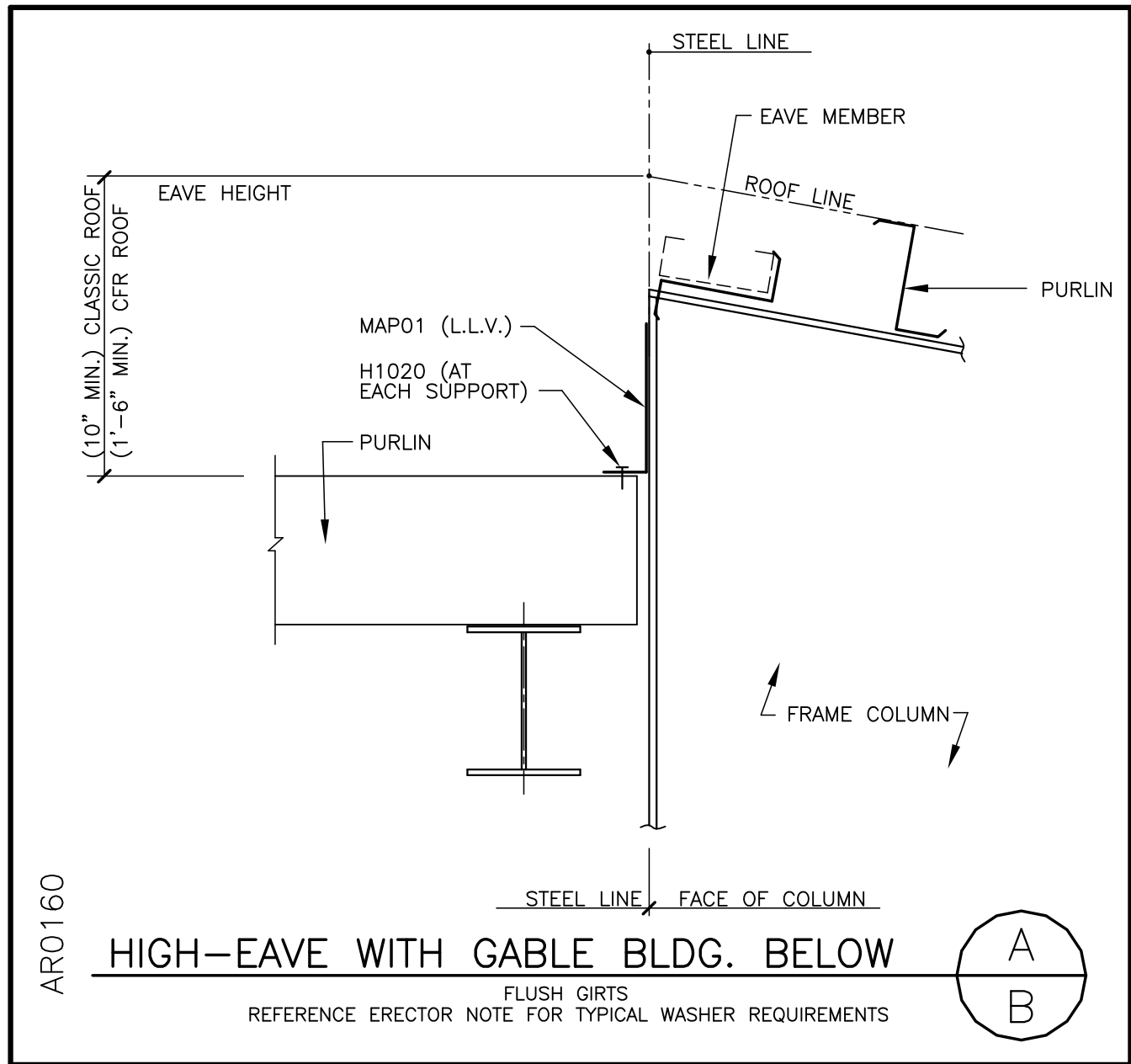
AR0140 – HIGH EAVE WITH GABLE BELOW, BYPASS GIRTS



AR0150 – HIGH EAVE WITH GABLE BELOW, INSET GIRTS



AR0160 – HIGH EAVE WITH GABLE BELOW, FLUSH GIRTS



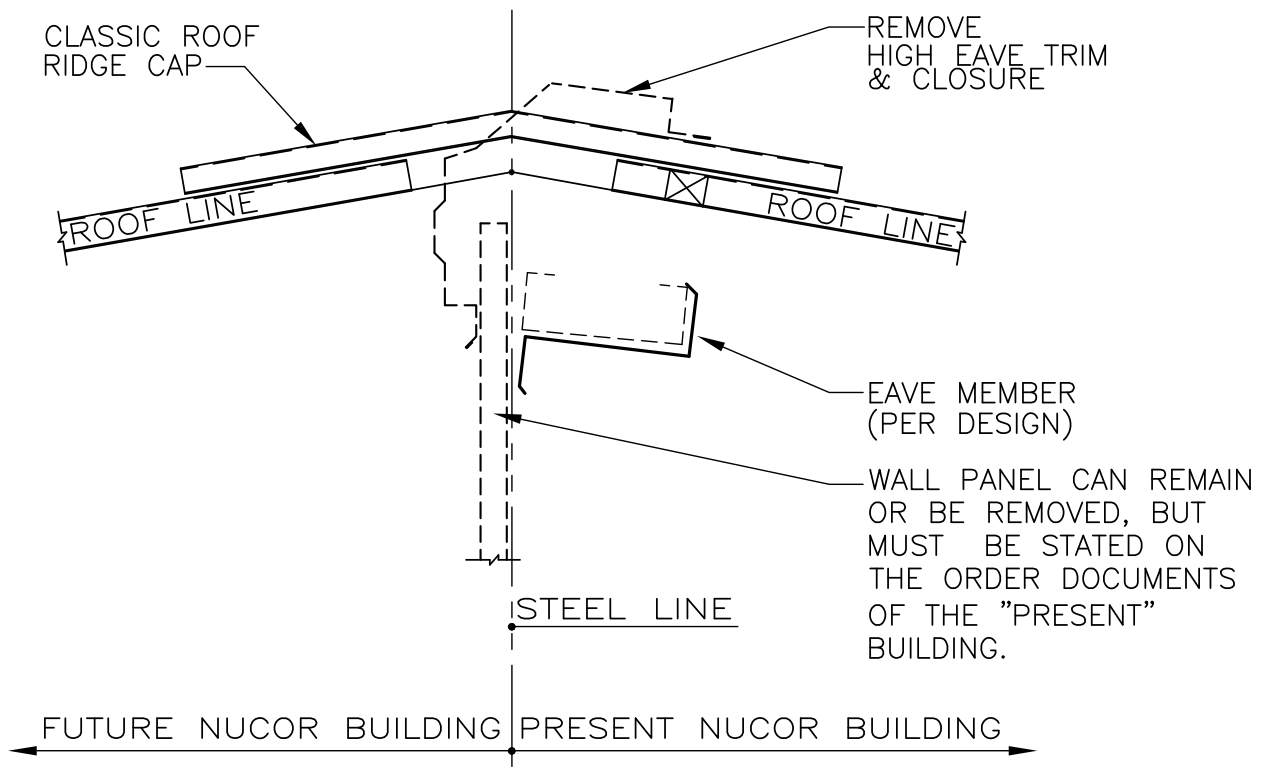
LAST REVISION DATE: 04/17/09 BY: AES CHK: KMC

<u>DETAIL NAME IF APPLICABLE</u> AR0160.DWG

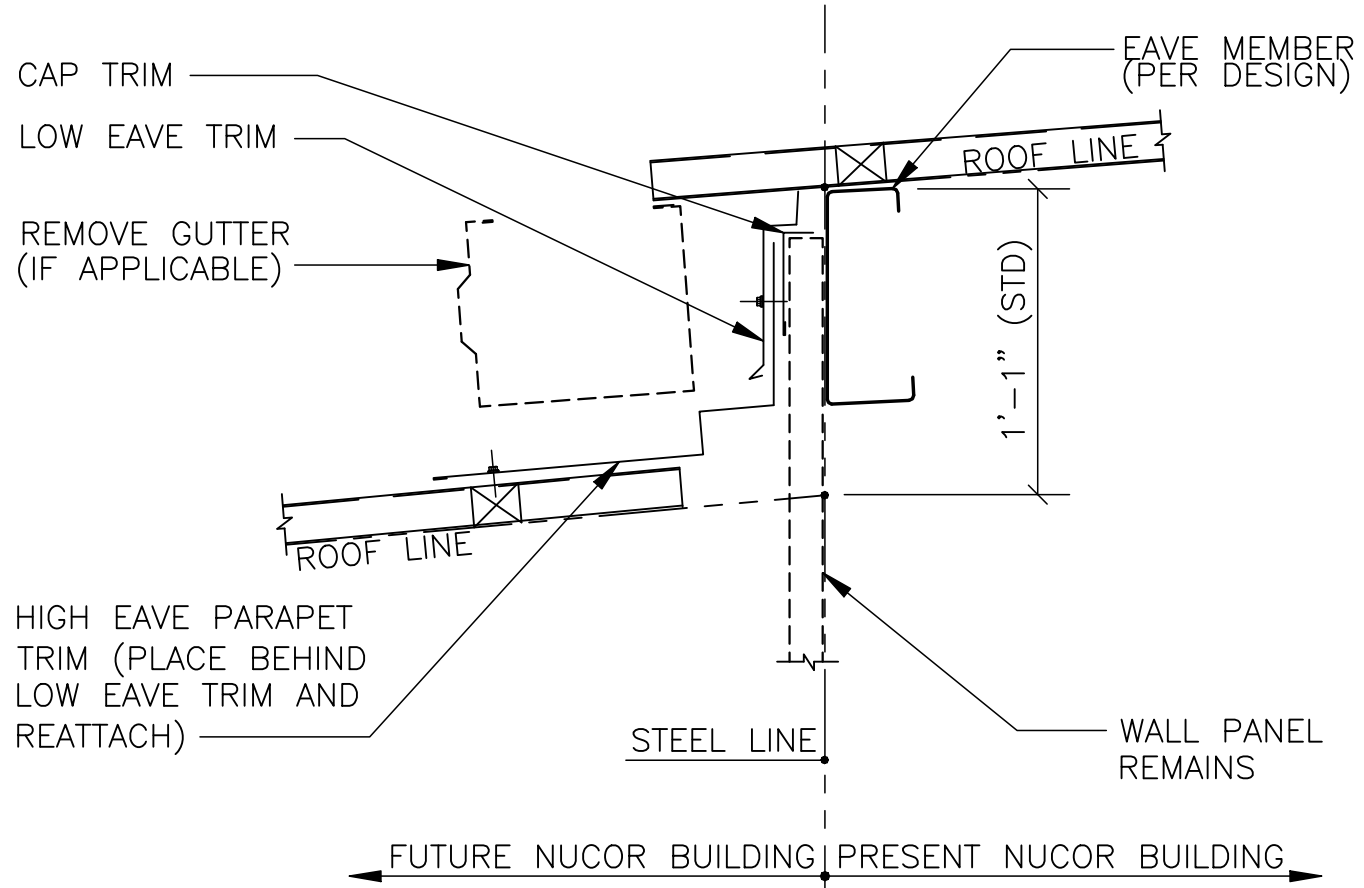
4.8.17

CLASSIC ROOF TRIM DETAILS

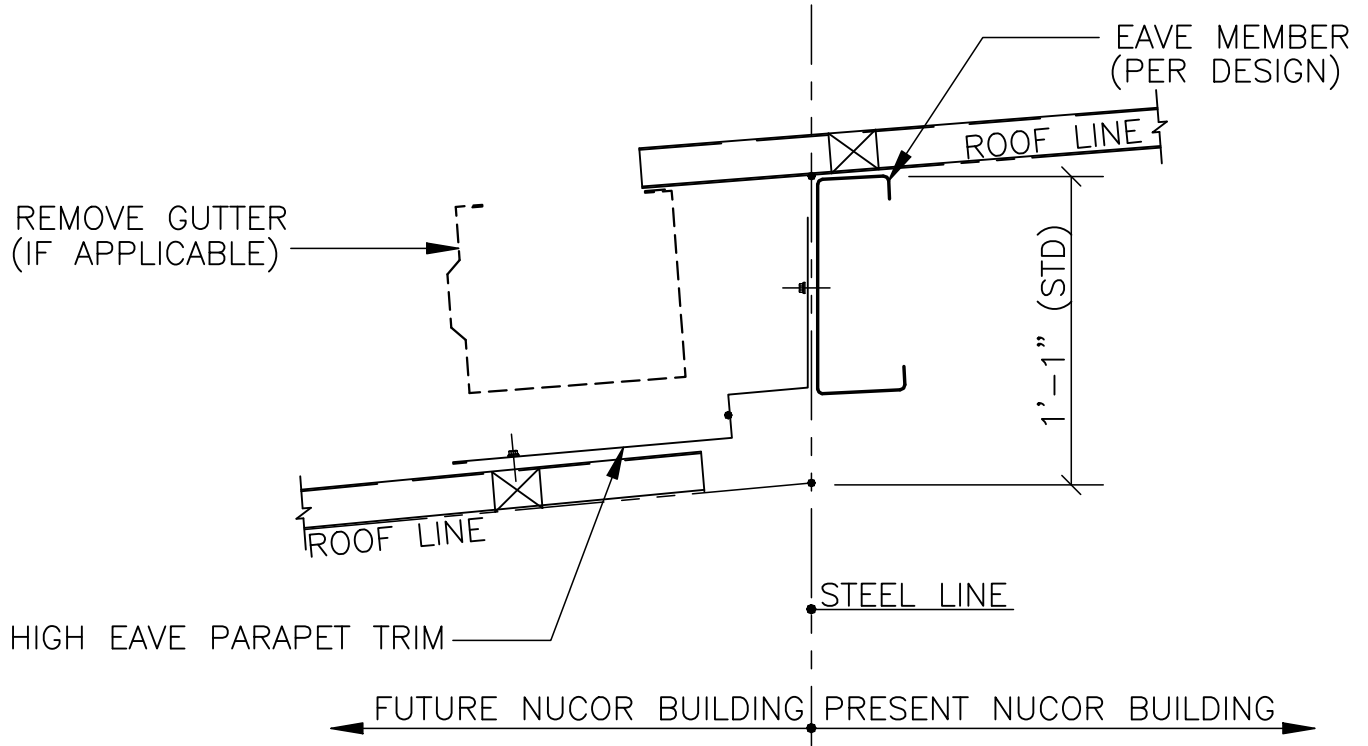
FE0010PE – HIGH EAVE FUTURE EXPANSION—RIDGE



FE0020PE – LOW EAVE FUTURE EXPANSION ROOF STEP (WALL PANEL REMAINS)



FE0030PE – LOW EAVE FUTURE EXPANSION ROOF STEP (WALL PANEL REMOVED)

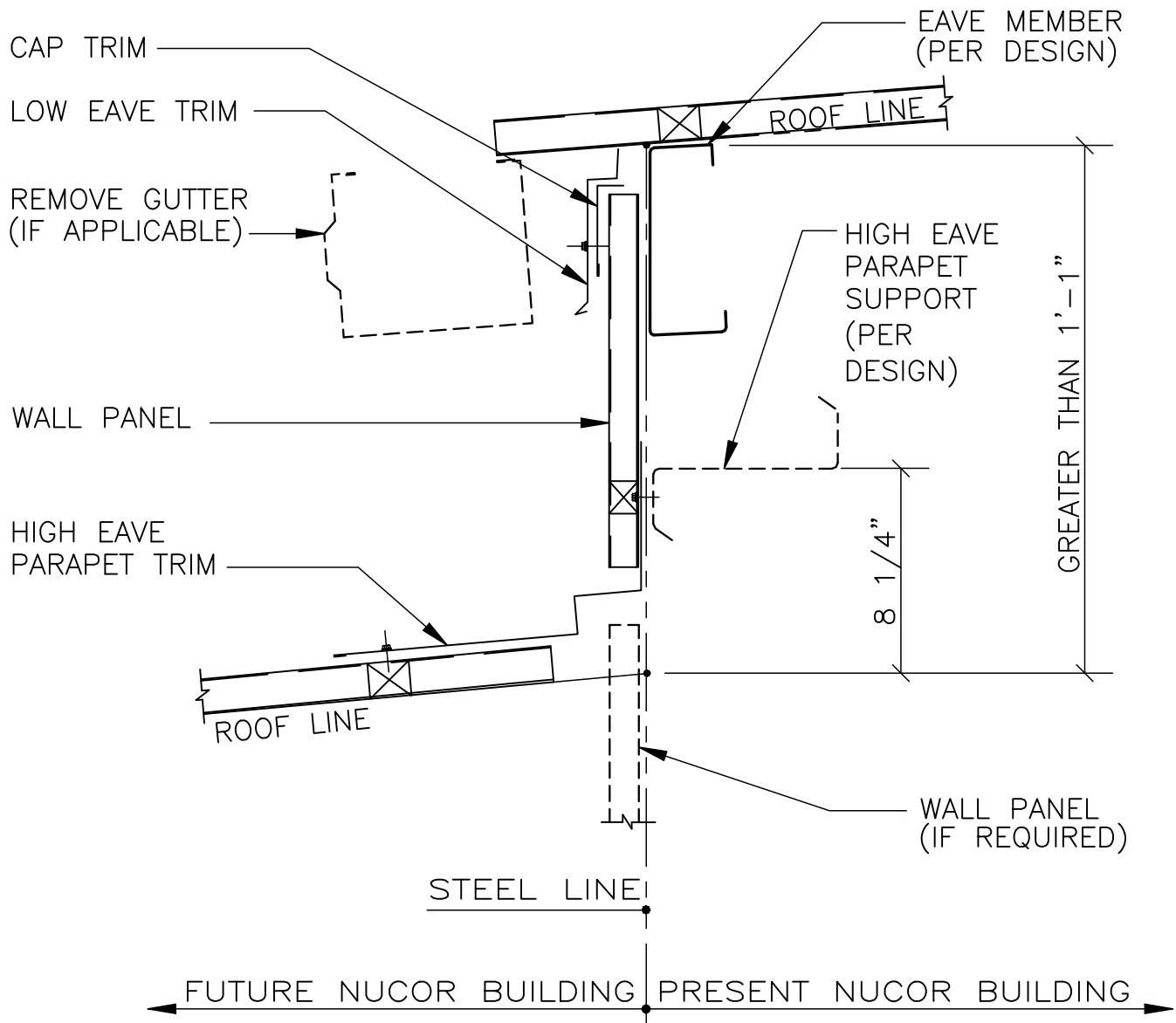


LAST REVISION DATE: <u>02/09/01</u> BY: <u>CDM</u> CHK: <u>RJF</u>
--

<u>DETAIL NAME IF APPLICABLE</u> FE0030PE.DWG

4.8.20

FE0040PE – LOW EAVE FUTURE EXPANSION (BELOW EAVE)

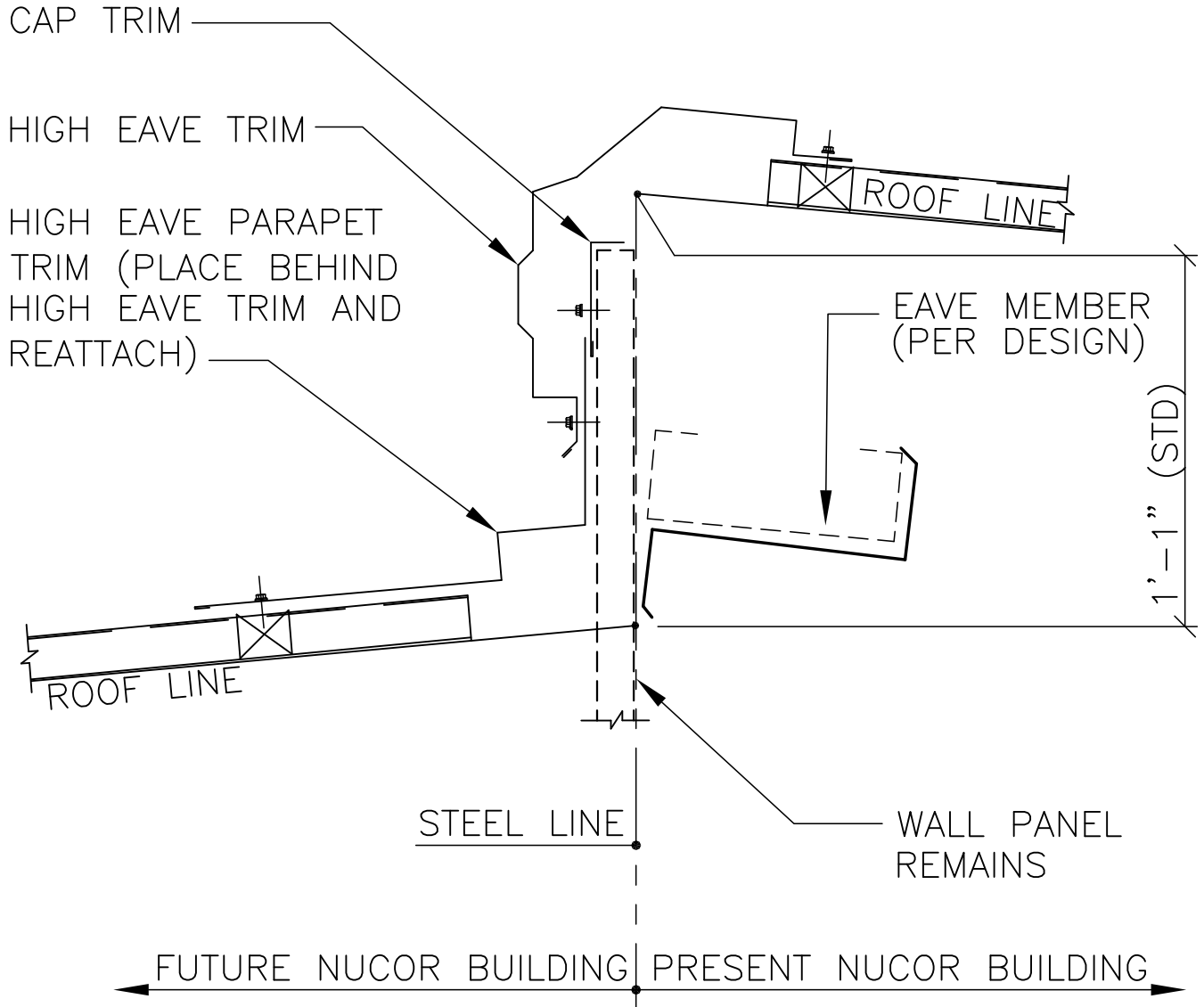


LAST REVISION DATE: <u>02/09/01</u> BY: <u>CDM</u> CHK: <u>RJF</u>
--

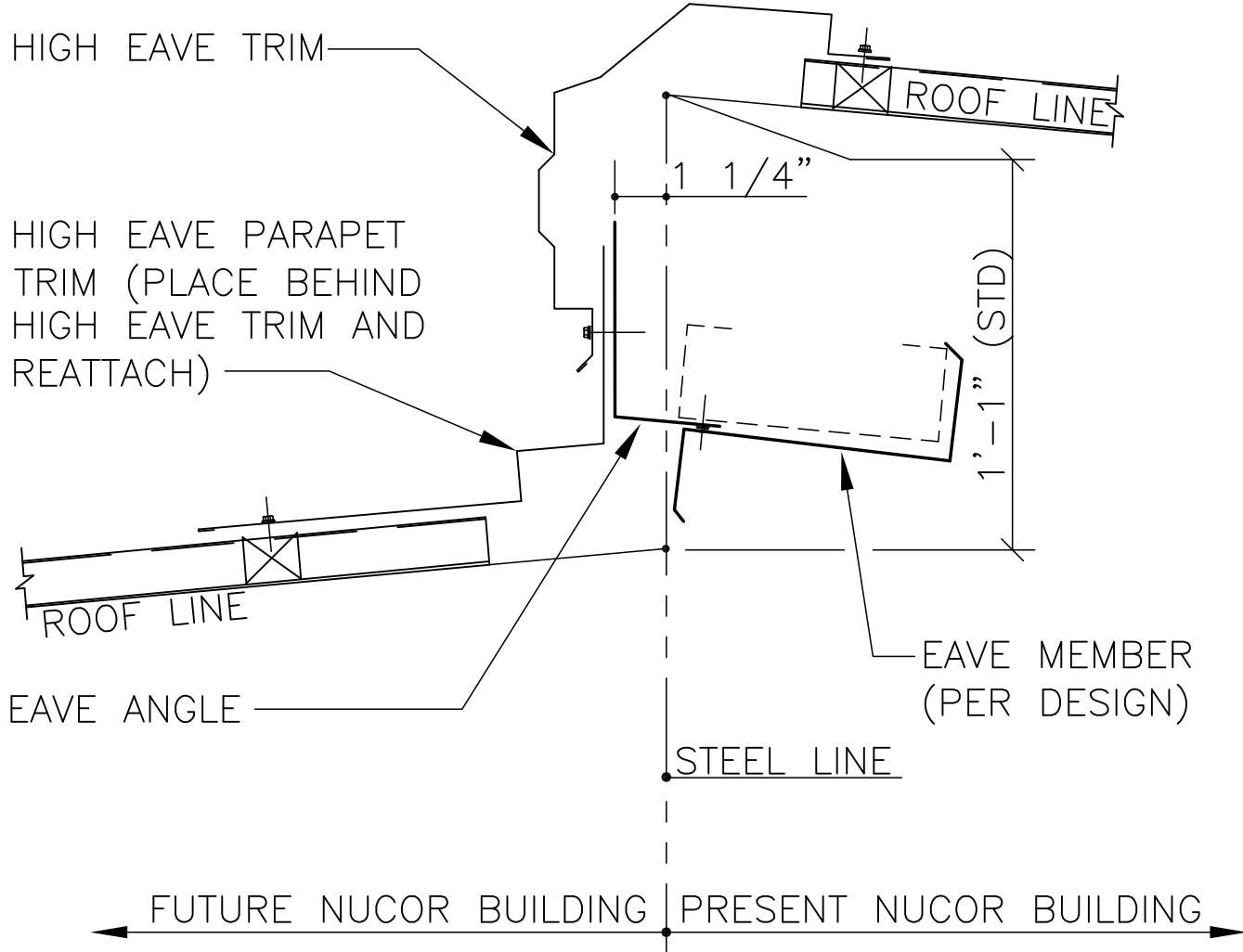
<u>DETAIL NAME IF APPLICABLE</u> FE0040PE.DWG

4.8.21

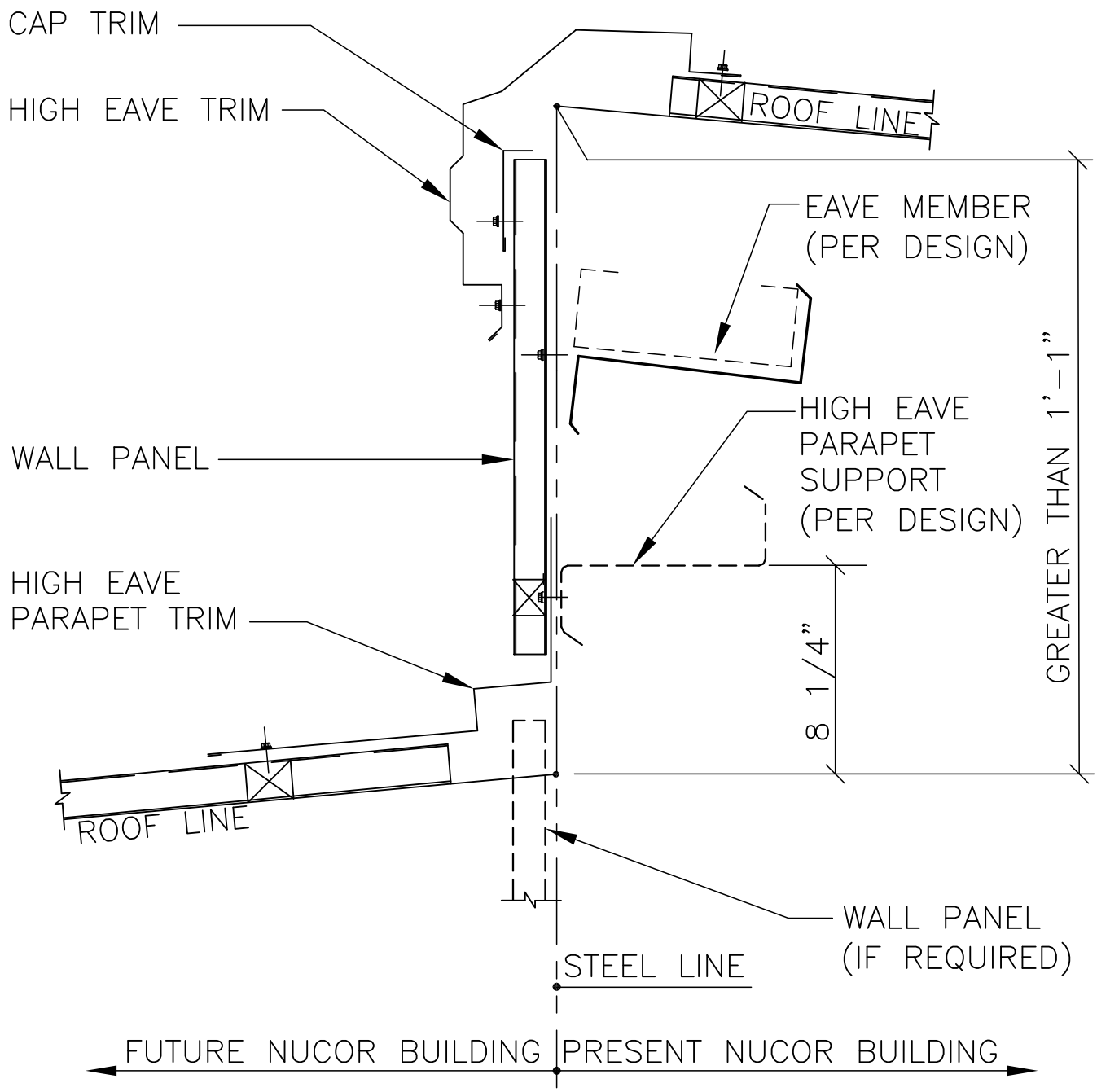
FE0050PE – HIGH EAVE FUTURE EXPANSION ROOF STEP (WALL PANEL REMAINS)



FE0060PE – HIGH EAVE FUTURE EXPANSION ROOF STEP (WALL PANEL REMOVED)

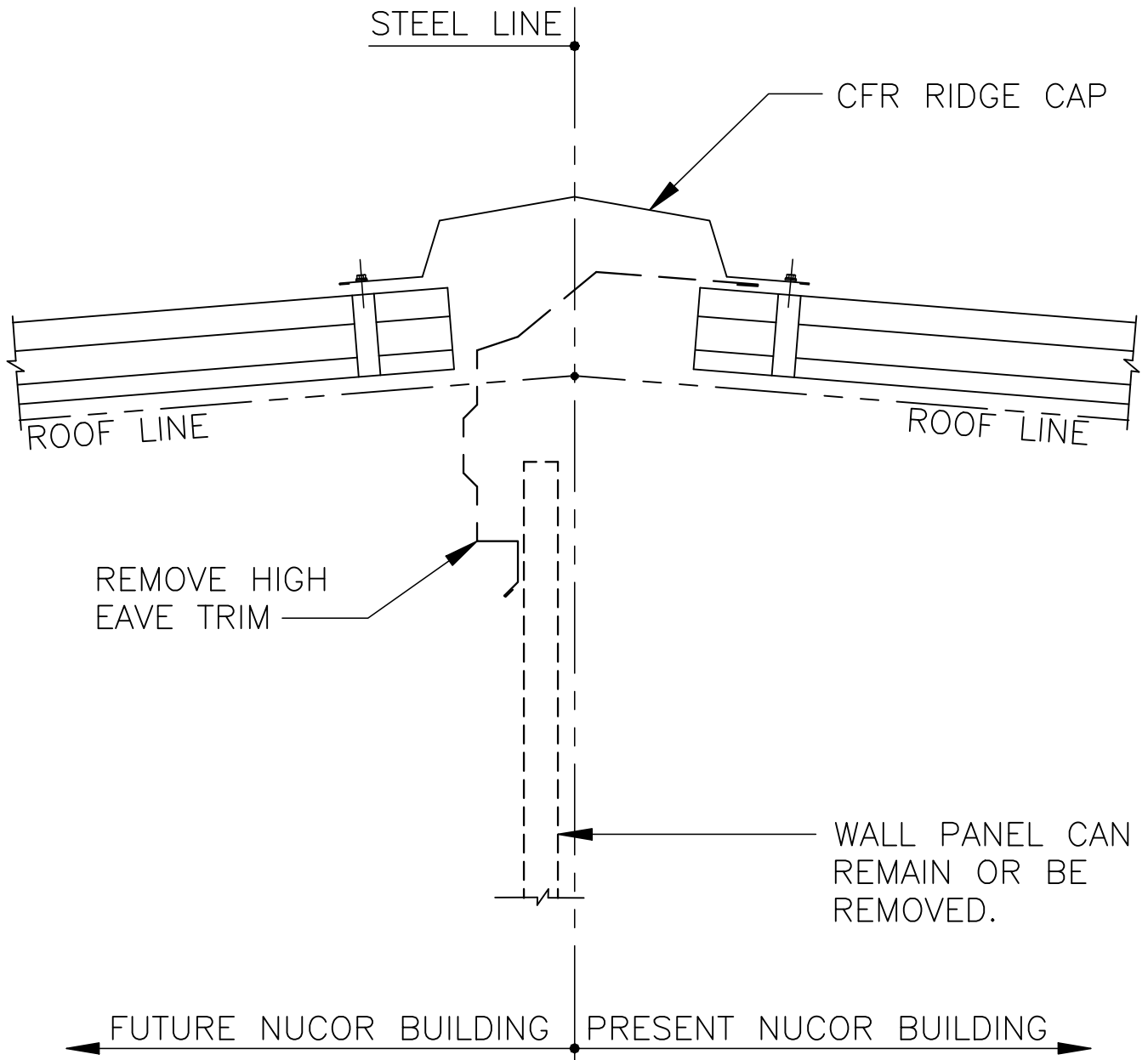


FE0070PE – HIGH EAVE FUTURE EXPANSION (BELOW EAVE)

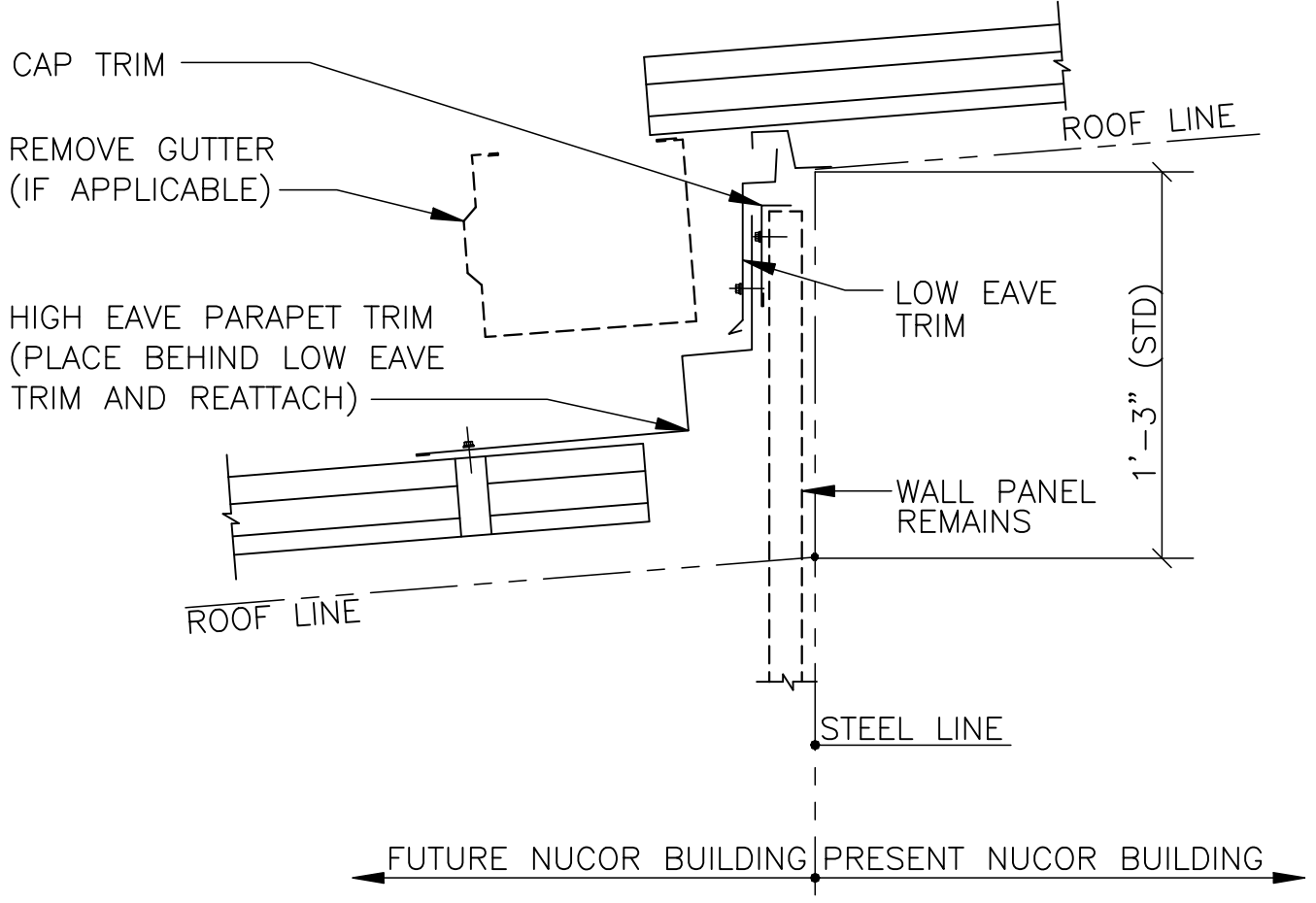


CFR ROOF TRIM DETAILS

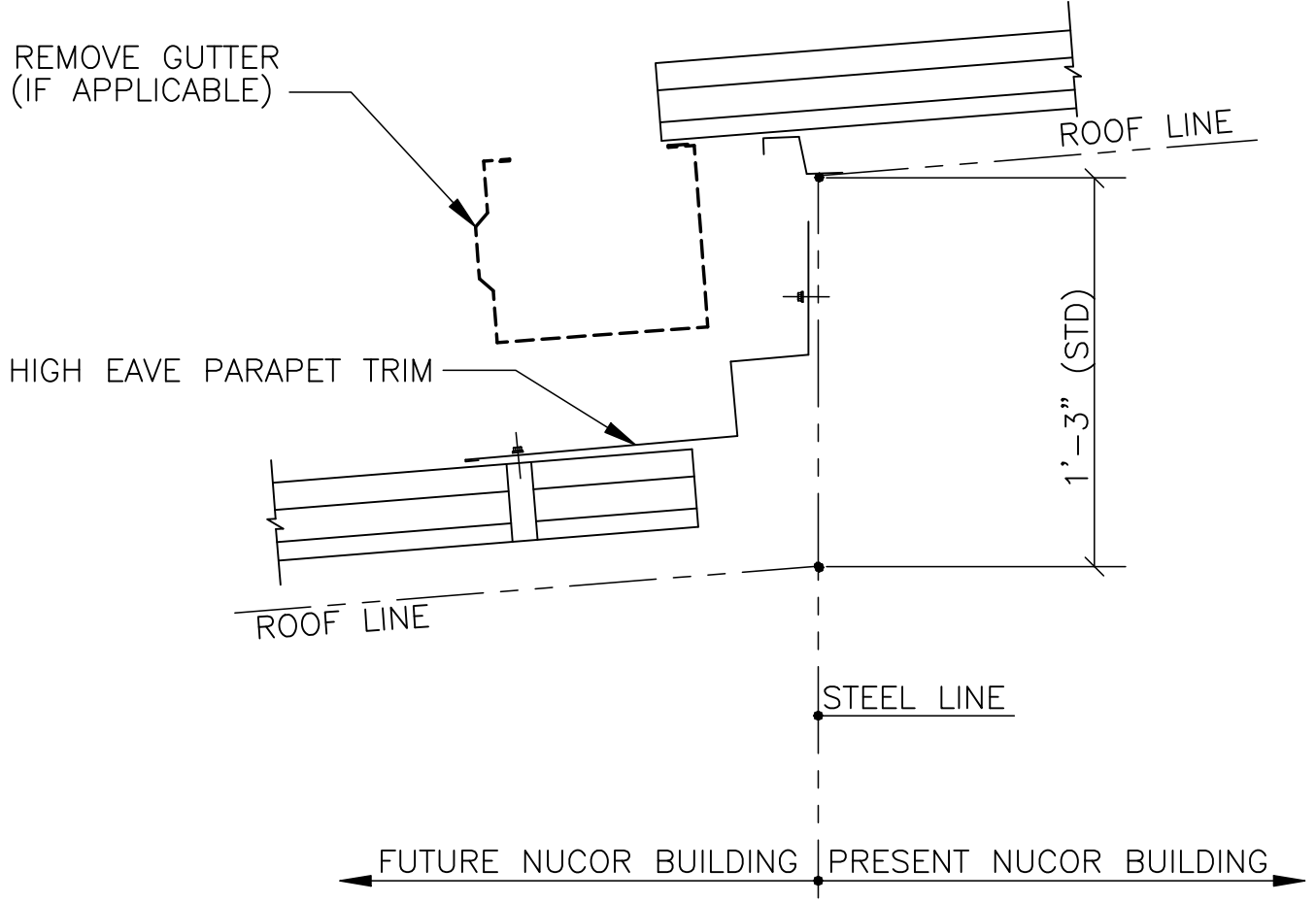
FE0080PE – HIGH EAVE FUTURE EXPANSION—RIDGE



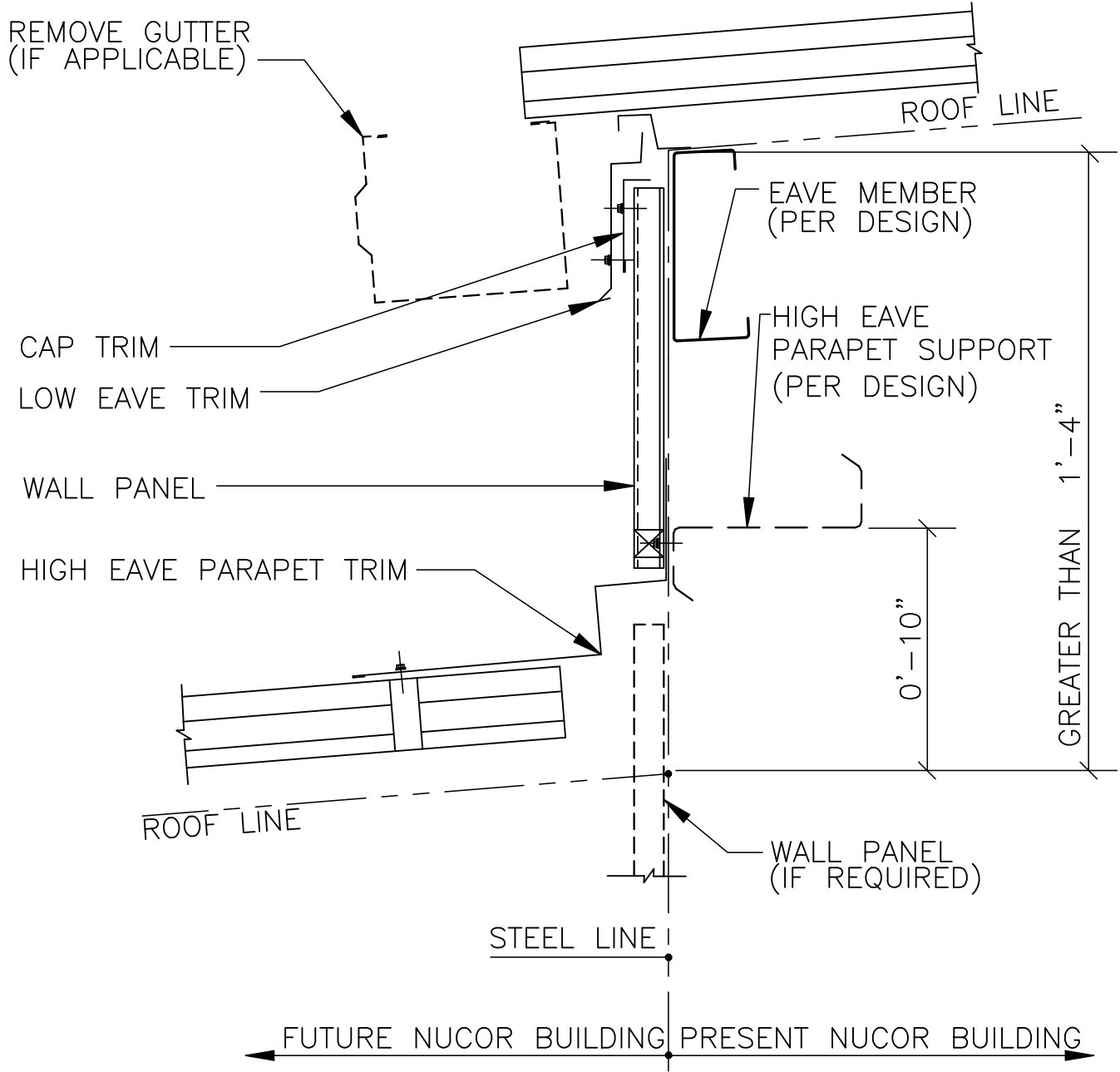
FE0090PE – LOW EAVE FUTURE EXPANSION ROOF STEP (WALL PANEL REMAINS)



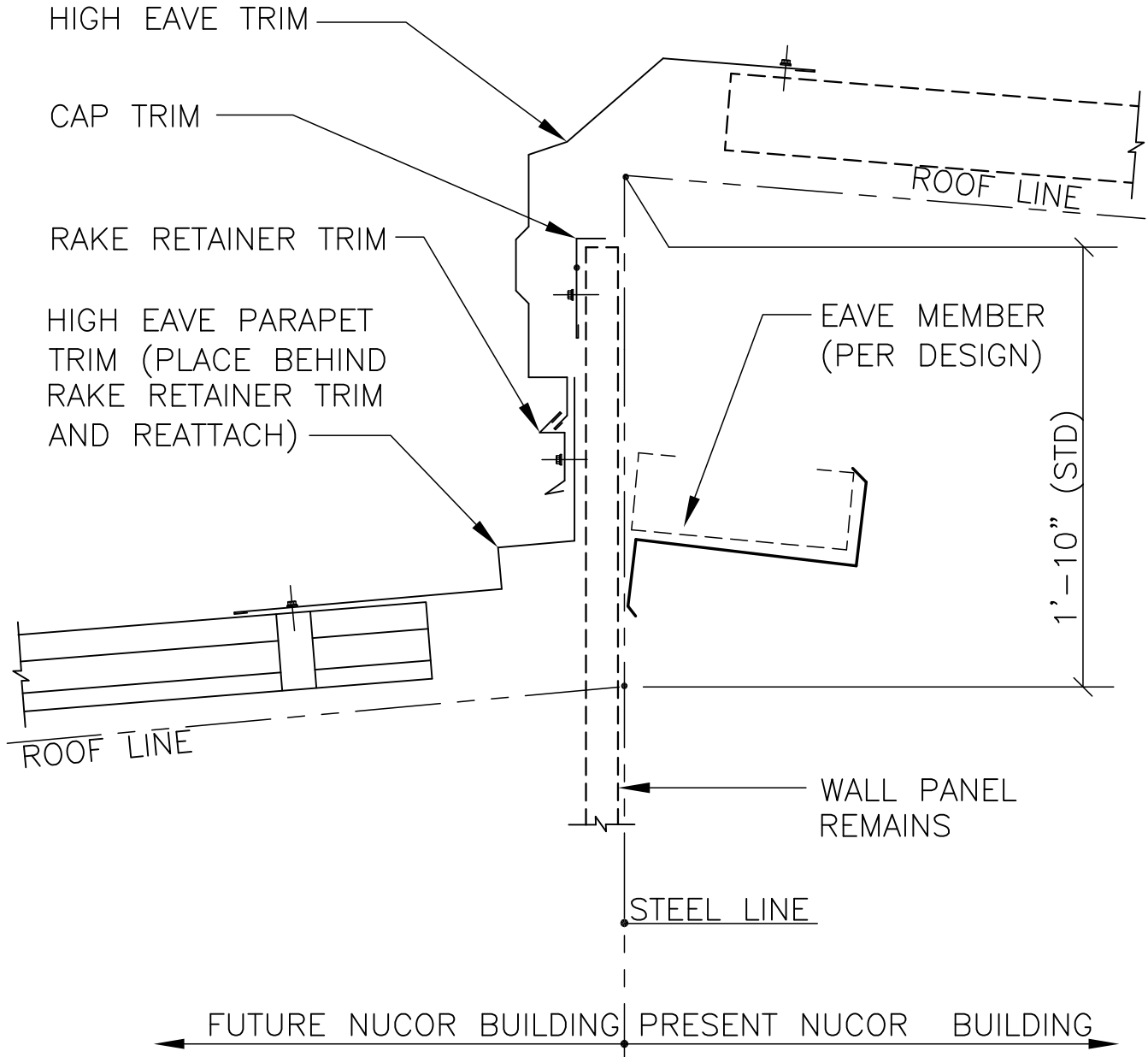
FE0100PE – LOW EAVE FUTURE EXPANSION ROOF STEP (WALL PANEL REMOVED)



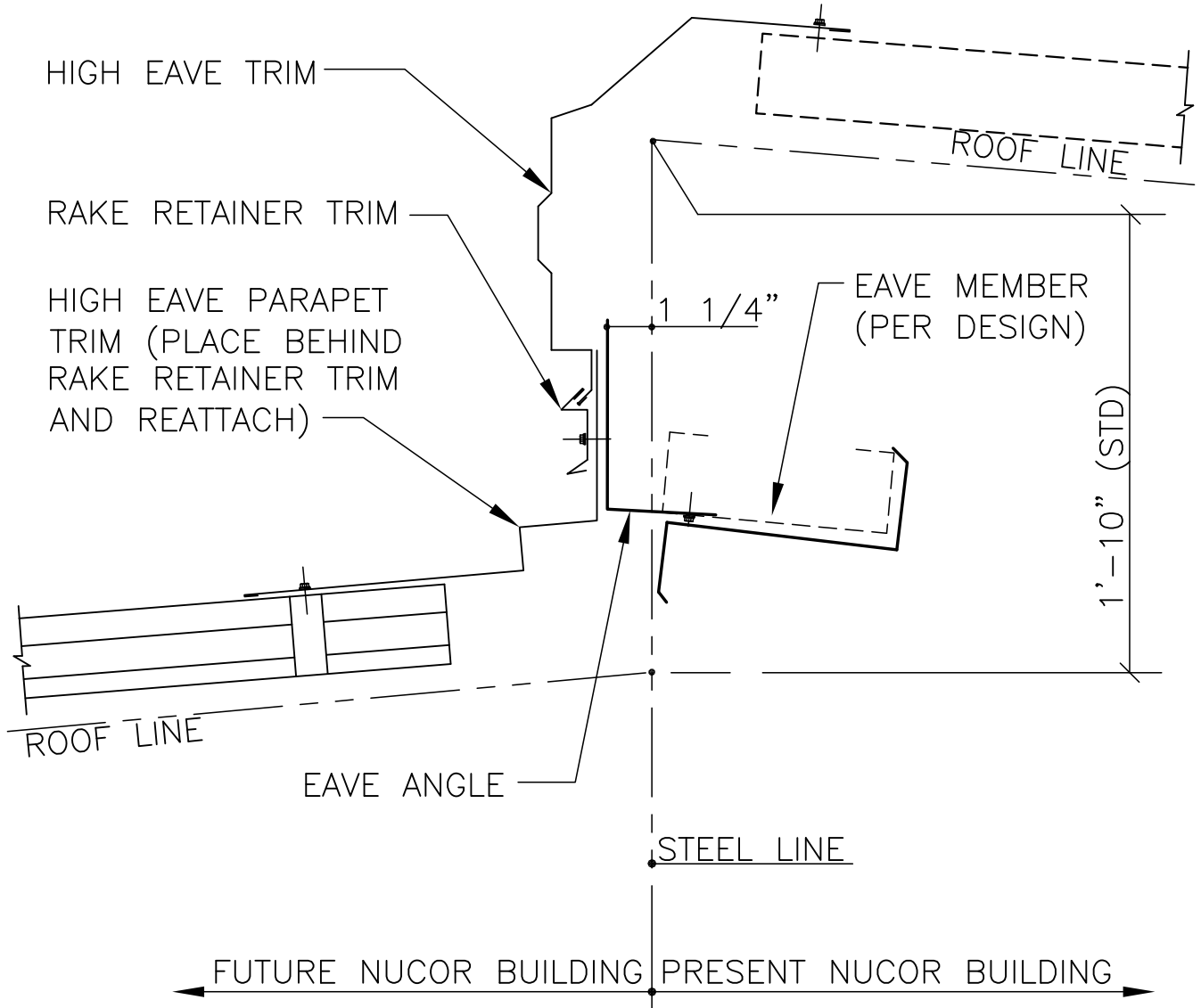
FE0110PE – LOW EAVE FUTURE EXPANSION



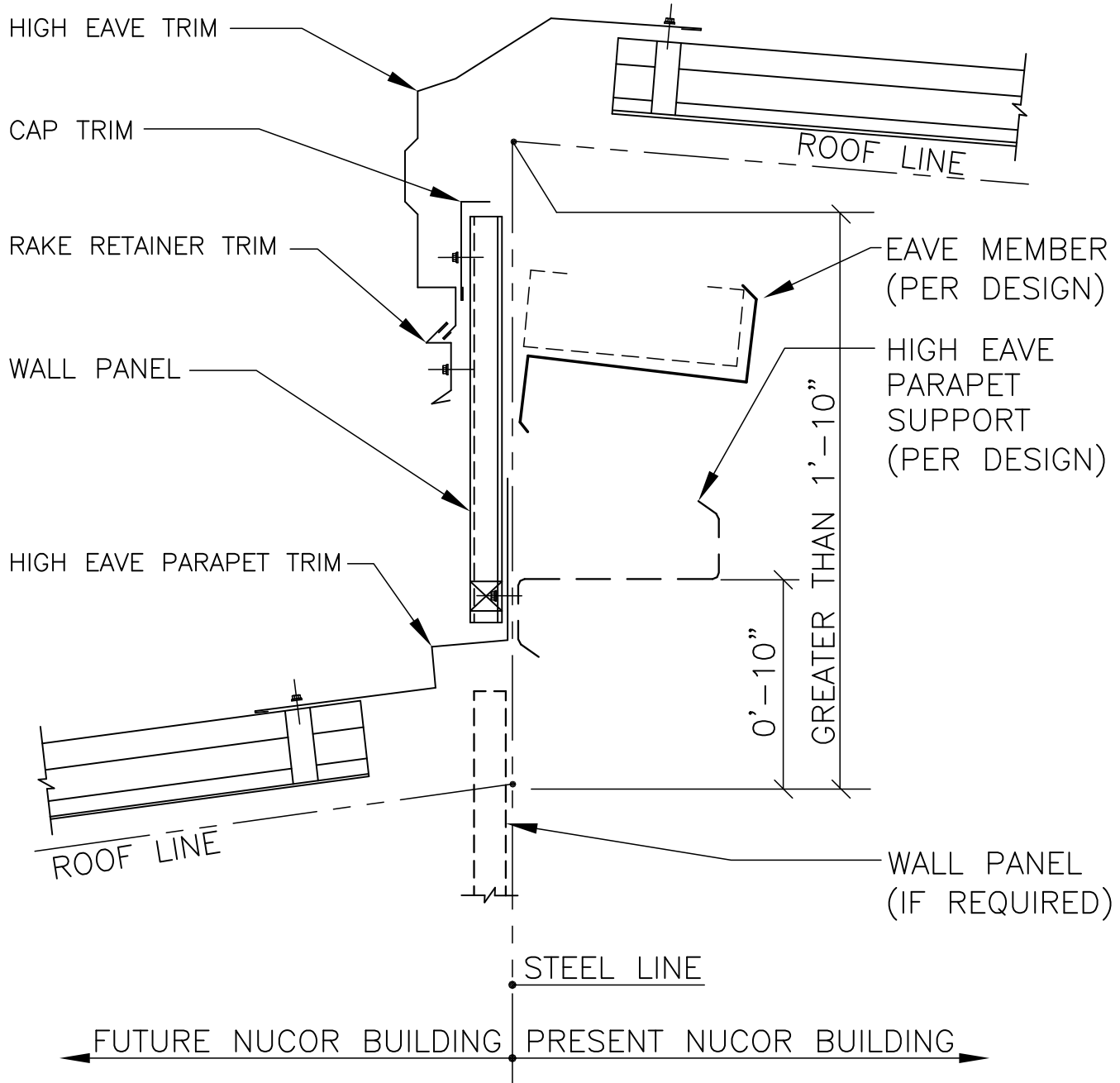
FE0120PE – HIGH EAVE FUTURE EXPANSION ROOF STEP (WALL PANEL REMAINS)



FE0130PE – HIGH EAVE FUTURE EXPANSION ROOF STEP (WALL PANEL REMOVED)



FE0140PE – HIGH EAVE FUTURE EXPANSION (BELOW EAVE)



LAST REVISION DATE: 04/17/09 BY: AES CHK:

DETAIL NAME IF APPLICABLE FE0140PE.DWG
--

4.8.31
